

VÁLVULAS
ENGINE VALVES

RIC
componentes

CATÁLOGO | CATALOG
2023 | 2024



A MAIS COMPLETA LINHA DE VÁLVULAS PARA MOTORES A COMBUSTÃO

VÁLVULAS | ENGINE VALVES



ÍNDICE | INDEX

VÁLVULAS
ENGINE VALVES

RIC
componentes

CATÁLOGO | CATALOG
2023 | 2024

USO DESTE CATÁLOGO 01
CATALOG USE

VÁLVULAS - CATÁLOGO DE APLICAÇÕES 03
VALVES - APPLICATIONS CATALOG

AGRALE | ASIA | AUDI 03

CATERPILLAR | CITROEN | CUMMINS | FIAT 04

FIAT 05

FIAT | FORD WILLYS | FORD / AUTOLATINA | FORD 06

FORD | GENERAL MOTORS 07

GENERAL MOTORS 08

GENERAL MOTORS | HONDA | HYUNDAI 09

KIA | MAXION / PERKINS | MAZDA | MERCEDES BENZ - FREIO MOTOR - Top Brake 10

MERCEDES BENZ 11

MERCEDES BENZ | MITSUBISHI | MWM | NISSAN 12

NISSAN | PEUGEOT | RENAULT 13

RENAULT | TOYOTA 14

VALTRA | VOLKSWAGEN 15

VOLKSWAGEN 16

YANMAR 17

VÁLVULAS ESPECIAIS PARA COMPETIÇÕES
SPECIAL VALVES - FOR COMPETITION

VOLKSWAGEN 17

GENERAL MOTORS 17

VÁLVULAS PARA MOTOCICLETAS
MOTORCYCLE VALVES

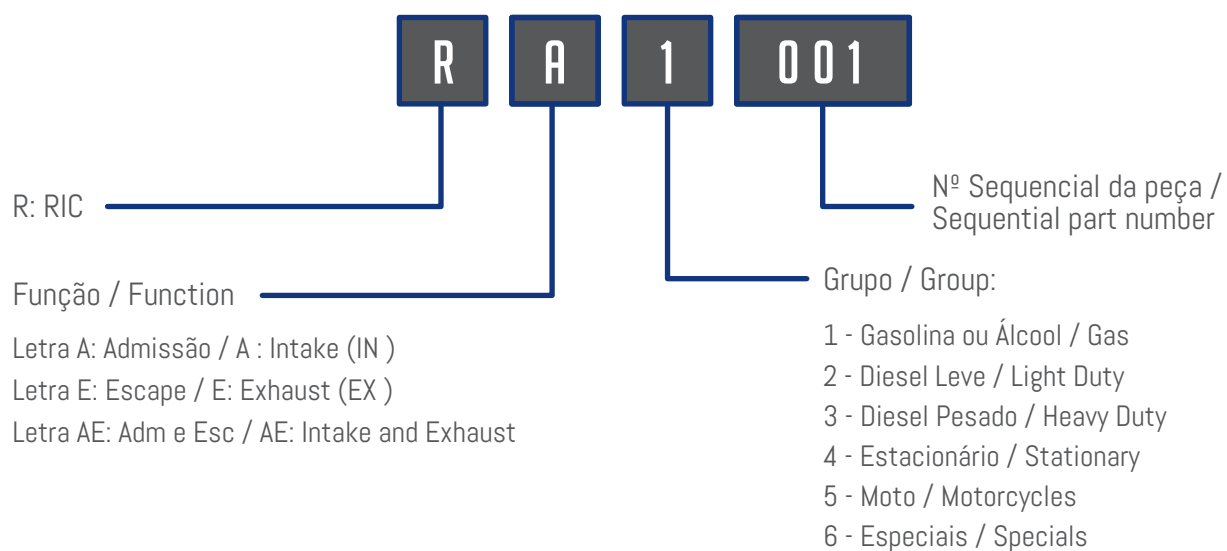
HONDA 18

YAMAHA | SUZUKI | SUNDOWN 19

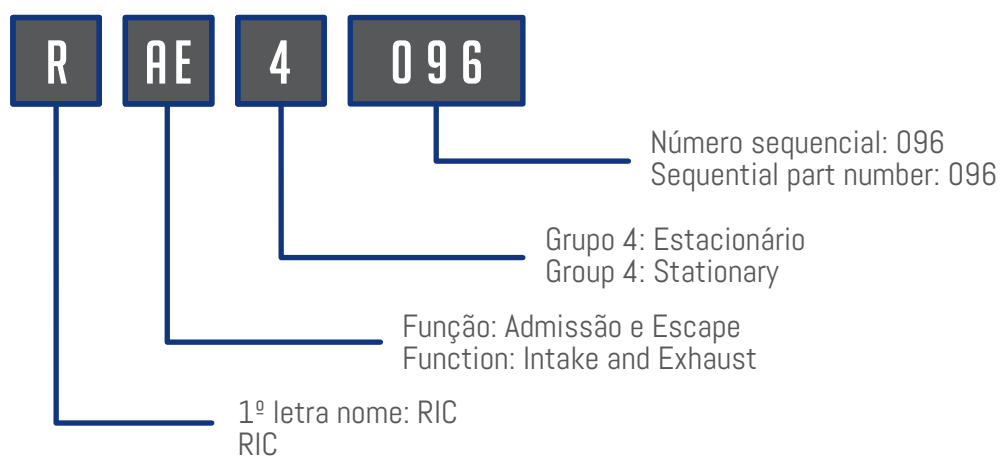
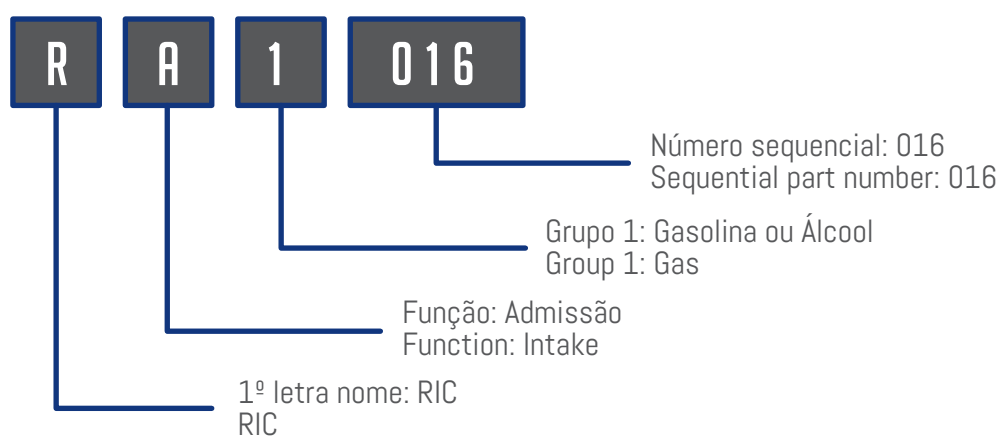
EQUIVALÊNCIAS RIC - VÁLVULAS DE ADMISSÃO 20
RIC EQUIVALENCES - INTAKE VALVES

EQUIVALÊNCIAS RIC - VÁLVULAS DE ESCAPE 28
RIC EQUIVALENCES - EXHAUST VALVES

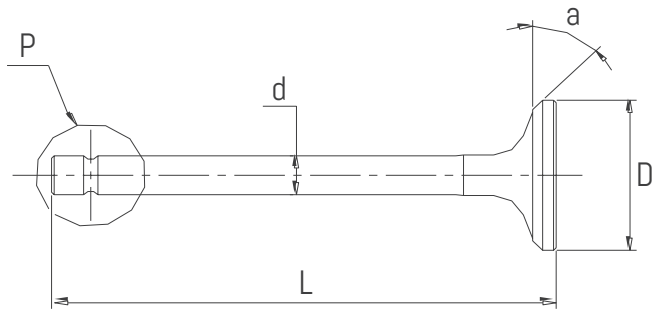
USO DESTE CATÁLOGO / CATALOG USE



EXEMPLOS / EXAMPLE



DIMENSÕES BÁSICAS / BASIC DIMENSION



(DESENHO ILUSTRATIVO / ILLUSTRATIVE DRAWING)

D - Ø da Cabeça / Head diameter
 d - Ø da Haste / Stem diameter
 L - Comprimento total / Total length
 a - Ângulo de Sede / Seat angle
 P - Tipo de Ponta / End types

TIPOS DE PONTA / END TYPES

CANALETA / RANHURA
 DESENHO ILUSTRATIVO / ILLUSTRATIVE DRAWING

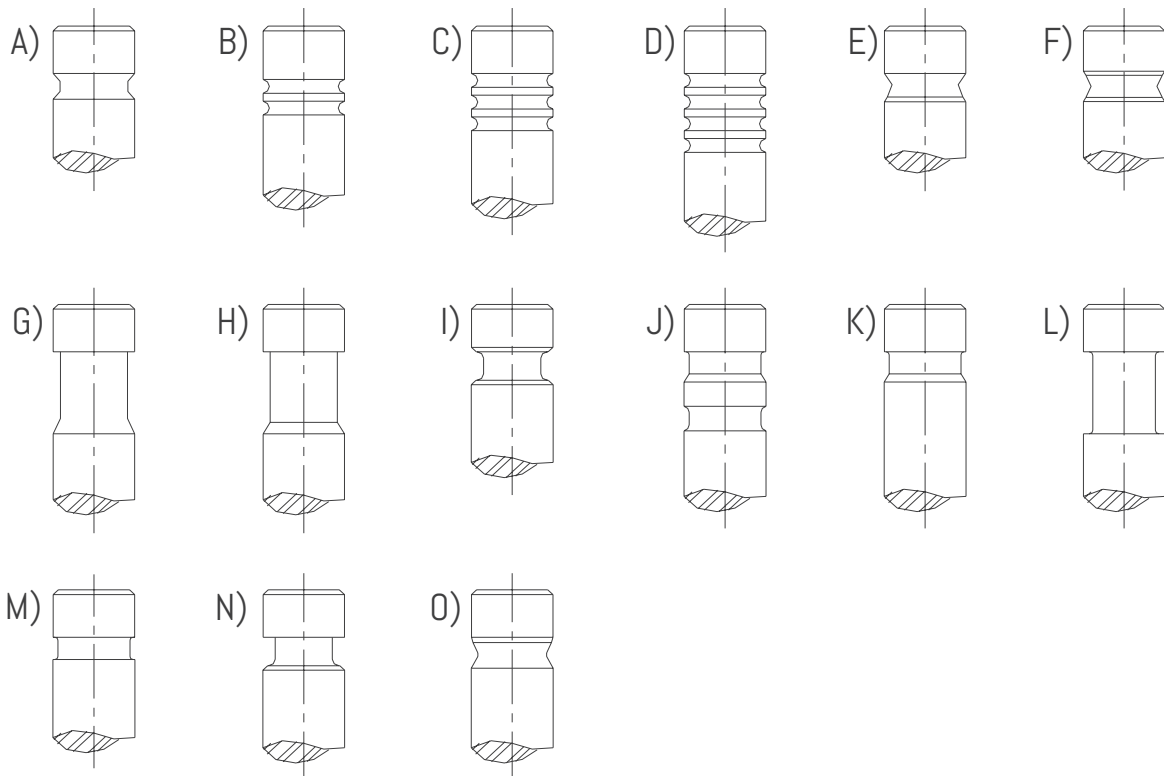


TABELA DE SOBREMEDIDA / OVERMEASURE TABLE

HASTE / STEM	POLEGADAS / INCHES	MILÍMETROS / MILIMETERS
STD	STD	STD
+3	0,003"	0,075"
+6	0,006"	0,150"
+12	0,012"	0,300"

VÁLVULAS - CATÁLOGO DE APLICAÇÕES / VALVES - APPLICATIONS CATALOG

CARRO DE PASSAGEIRO / COMERCIAIS / CAMINHÕES / ÔNIBUS / MÁQUINAS AGRÍCOLAS / MOTOCICLETAS / ESPECIAIS / COMPETIÇÃO
CARS / COMMERCIALS / TRUCKS / BUSES / AGRICULTURAL MACHINES / MOTORCYCLES / SPECIALS / COMPETITION

MODELOS	MOTORES	CIL.	COMB.	FUNÇÃO	Nº RIC	C. TOTAL	Ø CABEÇA	Ø HASTE	HASTE	ÂNGULO	PTA
MODELS	ENGINES	CYL	FUEL	FUNCTION	RIC P/N	TOTAL LENGTH	Ø HEAD	Ø STEM	STEM	ANGLE	TIP

AGRALE

TRATOR: T-213 / T-440 / E-573 / E673	M-70 / M-73	1	DIESEL	ADM/ESC	RAE 4087	74,80	30,40	6,95	STD	45	A
TRATOR: T-216 / T-415 / T-416 / E-80 / E-85	M-80 / M-85	1	DIESEL	ADM	RA 4088	121,50	34,10	7,95	STD	45	L
				ESC	RE 4089	121,50	31,10	7,95	STD	45	L
TRATOR: 4100 / T-416 / T-420 / E89	M-90 / M-93 ID	1	DIESEL	ADM	RA 4090	121,50	41,10	7,95	STD	45	L
				ESC	RE 4091	121,50	35,10	7,95	STD	45	L
TRATOR: TX1100 / 4200 / T-440 / 4200	M-790	2	DIESEL	ADM	RA 4092	132,00	39,00	8,94	STD	45	A
				ESC	RE 4093	132,00	35,00	8,94	STD	45	A

ASIA

TOPIC	2.7L	4/6.	DIESEL	ADM	RA 2115	114,40	40,40	7,94	STD	45	A
				ESC	RE 2116	114,55	36,00	7,93	STD	30	A
TOWNER	AB - CB 1.0L - 6V	2/3.	GASOLINA	ADM	RA 1299	101,70	36,00	6,94	STD	45	A
				ESC	RE 1300	101,60	33,00	6,93	STD	45	A
NOVA TOWNER HAFPEI (VAN/PICK-UP/FURGÃO)	1.0L - 8V	4	GASOLINA	ADM	RA 1385	109,65	31,50	6,97	STD	45	A
				ESC	RE 1386	109,55	27,50	6,96	STD	45	A

AUDI

A3 (96....) / S3 (98....) / S4 (94-99)	AGU/ AGN/ AFY/ ADR/ AEB/ AJL/ AQA/ APY/ AJQ	4	GASOLINA	ADM	RA 1262	105,10	26,90	5,96	STD	45	C
A4 (94....) / A6 (97....)	1.8L - 20V Turbo e Aspirado										
A4 (97....) / A6 (97....) / S4 (99....)	AGA / AJG / ALF / APZ / APS	V6									
	2.4L - 30V Turbo e Aspirado										
A4/A6 (97....) / A4II / S4 / A8	ACK / ALG / APR / AQD	V6									
S8 (96....) / S4 (99....)	2.7L - 30V Turbo e Aspirado										
S4/ Avant / A4 II	AGB 2,7L - 30V	V6									
	2.8L - 30V Turbo e Aspirado										
A3 (96....) / A4 (94....) / A6	AGU / AEB / AJL / AGB / APY / AJQ / AQA	4	GASOLINA	ESC	RE 1263	104,10	29,90	5,94	STD	45	C
S4 (97....) / S3 (98....)	Turbo	V6									
A3 (96....) / A4 (94....) / S4 (94....)	AGN / ADR / AGA / AJG / ALF / ACK / ALG	4	GASOLINA	ESC	RE 1264	104,10	29,90	5,94	STD	45	C
	AFB / AKN / APZ / APS / APR / AQD	6									
	Aspirado	V6									
AUDI Q7 / A6 / A3	1.8 - 2.0 16V / 2.5 20V	4	GASOLINA	ADM	RA 1424	104,00	33,90	5,98	STD	45	C
				ESC	RE 1425	101,80	28,00	5,96	STD	45	C
A3 / A4 / A5 / A6 / Q5 / TT	2.0L - 16V TDI	4	DIESEL	ADM	RA 2392	99,30	28,10	5,97	STD	45	C
				ESC	RE 2393	99,10	26,00	5,96	STD	45	C
A3 / A4	2.5L - 16V TDI	4	DIESEL	ADM	RA 2394	88,60	29,50	5,98	STD	45	C
				ESC	RE 2395	88,00	25,50	5,97	STD	45	C
A3	TFSI 1.4 L 16V	4	FLEX	ADM	RA 1467	110,25	28,55	4,98	STD	45	C
				ESC	RE 1468	110,05	25,00	4,97	STD	30	C

suitable for

VÁLVULAS - CATÁLOGO DE APLICAÇÕES | VALVES - APPLICATIONS CATALOG

CARRO DE PASSAGEIRO / COMERCIAIS / CAMINHÕES / ÔNIBUS / MÁQUINAS AGRÍCOLAS / MOTOCICLETAS / ESPECIAIS / COMPETIÇÃO
CARS / COMMERCIALS / TRUCKS / BUSES / AGRICULTURAL MACHINES / MOTORCYCLES / SPECIALS / COMPETITION

MODELOS	MOTORES	CIL.	COMB.	FUNÇÃO	N° RIC	C. TOTAL	Ø CABEÇA	Ø HASTE	HASTE	ÂNGULO	PTA
MODELS	ENGINES	CYL.	FUEL	FUNCTION	RIC P/N	TOTAL LENGTH	Ø HEAD	Ø STEM	STEM	ANGLE	TIP

CATERPILLAR

977/ 11K/ 761	3304 / 3304T / 3306 / 3306T Asp./ Turbo INJ.DIRETA	4/6	DIESEL	ADM	RA 3056	139,95	51,30	9,44	STD	30	B
	ESC			RE 3057	138,92	48,16	9,44	STD	30	B	

CITROEN

XSARA / PICASSO / C3 / BERLINGO	TU5JP4 1.6L - 16V	4	GASOLINA	ADM	RA 1283	103,80	31,30	5,97	STD	45	A
			FLEX	ESC	RE 1284	104,40	24,50	5,97	STD	45	A
C3	TU3JP 1.4L - 8V	4	FLEX	ADM	RA 1314	112,76	36,73	6,98	STD	45	A
				ESC	RE 1282	112,65	29,20	6,96	STD	45	A
XSARA / XANTIA / PICASSO	XU7JP4 1.8L - 16V	4	GASOLINA	ADM	RA 1285	106,40	34,60	5,97	STD	45	A
				ESC	RE 1286	105,80	29,60	5,97	STD	45	A
XSARA / XANTIA / PICASSO / C4 / C5	EW 10 2.0L - 16V (2001...)	4	GASOLINA	ADM	RA 1287	106,20	33,30	5,97	STD	45	A
				ESC	RE 1288	103,70	29,00	5,97	STD	45	A
XSARA / BERLINGO / C4 / C5	XU7JP 1.8L - 8V	4	GASOLINA	ADM	RA 1311	108,55	41,50	7,96	STD	45	A
				ESC	RE 1312	108,40	34,50	7,96	STD	45	A
CITROEN C3/ C3 PICASSO	TU4M-1.5L - 8V	4	FLEX	ADM	RA 1410	112,40	37,70	5,98	STD	45	A
				ESC	RE 1411	112,50	30,20	5,97	STD	45	A
C3 / C4	ET3J4 1.4L - 16V	4	FLEX	ADM	RA 1458	100,80	28,30	5,49	STD	45	C
				ESC	RE 1459	101,20	24,50	5,47	STD	45	C

CUMMINS

SÉRIE B	5.9L (6B / 6BT / 6BTA / 6BTAA)	4/6	DIESEL	ADM	RA 3242	129,10	45,00	7,97	STD	30	F
				ESC	RE 3243	129,00	42,00	7,97	STD	45	F
SÉRIE C	8.3L (6C / 6CT / 6CTA / 6CTAA)	6	DIESEL	ADM	RA 3244	151,10	52,00	9,48	STD	30	F
				ESC	RE 3245	150,90	46,00	9,48	STD	45	F
ISB ELETRÔNICO	ISB ELETRÔNICO 260.300 ISF 3.8L QSB / ISB - 4.5 / 6.7 L	4/6	DIESEL	ADM	RA 2460	124,60	33,00	7,00	STD	30	A
				ESC	RE 2461	124,30	33,00	7,00	STD	45	A

FIAT

147/ UNO/ CITY/ MILLE/ ELBA/ PREMIO/ OGGI/FIORINO/ PANORAMA	1000/ 1050/ 1300CC	4	GASOLINA	ADM	RA 1016	110,20	34,00	7,98	STD	45	A
	CARBURADO / INJ. ELETRÔNICA		ALCOOL	ESC	RE 1017	110,60	29,00	7,98	STD	45	A
PREMIO/ ELBA/ FIORINO/ PICKUP	1500CC FIASA - BRASIL	4	GASOLINA	ADM	RA 1084	110,20	36,50	7,98	STD	45	A
	CARBURADO / INJ. ELETRÔNICA		ALCOOL	ESC	RE 1017	110,60	29,00	7,98	STD	45	A
UNO / ELBA / PREMIO	1500	4	GASOLINA	ADM	RA 1040	108,50	36,00	7,98	STD	45	F
	ARGENTINO		ALCOOL	ESC	RE 1041	109,00	33,15	7,98	STD	45	F
UNO / ELBA / PREMIO / DUNA / FIORINO / PICK-UP / TIPO	1.6L - 8 V	4	GASOLINA	ADM	RA 1074	108,50	39,50	7,98	STD	45	F
			ALCOOL	ESC	RE 1075	109,00	31,00	7,98	STD	45	F
PALIO/ PALIO WEEKEND/ NOVO PALIO SPORTING/ STRADA / PUNTO/ IDEA/ NOVO SIENA/ ADVENTURE BRAVO / FIAT 500 / DOBLO / LINEA	1.6 / 1.8L - 16V	4	FLEX	ADM	RA 1398	109,75	30,70	5,96	STD	45	C
	E- TORQ			ESC	RE 1399	118,50	23,30	5,93	STD	45	C

suitable for

VÁLVULAS - CATÁLOGO DE APLICAÇÕES / VALVES - APPLICATIONS CATALOG

CARRO DE PASSAGEIRO / COMERCIAIS / CAMINHÕES / ÔNIBUS / MÁQUINAS AGRÍCOLAS / MOTOCICLETAS / ESPECIAIS / COMPETIÇÃO
CARS / COMMERCIALS / TRUCKS / BUSES / AGRICULTURAL MACHINES / MOTORCYCLES / SPECIALS / COMPETITION

MODELOS	MOTORES	CIL.	COMB.	FUNÇÃO	Nº RIC	C. TOTAL	Ø CABEÇA	Ø HASTE	HASTE	ÂNGULO	PTA
MODELS	ENGINES	CYL.	FUEL	FUNCTION	RIC P/N	TOTAL LENGTH	Ø HEAD	Ø STEM	STEM	ANGLE	TIP
FIAT											
TIPO / UNO / ELBA / PREMIO / FIORINO / PICK-UP	1.4L - 8V	4	GASOLINA	ADM	RA 1391	108,50	37,50	7,99	STD	45	F
	1.6L - 8V		ALCOOL	ESC	RE 1075	109,00	31,00	7,98	STD	45	F
PALIO / PALIO WEEKEND / PICK-UP TRECKING / WORKING	1.0 / 1.5L - 8V	4	GASOLINA	ADM	RA 1140	110,20	36,50	7,98	STD	45	A
	MPI			ESC	RE 1141	110,60	29,40	7,98	STD	45	A
MILLE / PALIO / SIENA	1.0 / 1.3L - 8V	4	GASOLINA	ADM	RA 1142	96,80	31,40	6,99	STD	45	F
	FIRE			ESC	RE 1143	97,15	27,15	6,98	STD	45	F
PALIO / SIENA	1.0 / 1.3L - 16V	4	GASOLINA	ADM	RA 1144	95,20	26,90	5,99	STD	45	C
	FIRE			ESC	RE 1145	96,10	22,40	5,98	STD	45	C
PALIO STRADA (2000...)	1.5L - 8V	4	GASOLINA	ADM	RA 1084	110,20	36,50	7,98	STD	45	A
				ESC	RE 1139	110,60	31,00	7,98	STD	45	A
MAREA / MAREA WEEKEND	2.0L - 20V	5	GASOLINA	ADM	RA 1146	113,02	30,00	6,97	STD	45	C
				ESC	RE 1147	108,58	26,00	6,97	STD	45	C
TEMPRA / TEMPRA SW / TIPO	2.0L - 8V	4	GASOLINA	ADM	RA 1198	105,80	43,50	7,98	STD	45	F
				ESC	RE 1199	106,00	36,10	7,98	STD	45	F
STILO	1.8L - 8V	4	GASOLINA	ADM	RA 1260	101,50	38,00	7,01	STD	44	E
	(Power Train)		FLEX	ESC	RE 1261	101,50	31,00	6,99	STD	44	E
MAREA / STILO / BRAVA / ALFA 145 / 146 / 155 / 156	MAREA 1.8/2.4L - 16/20V BRAVA 1.8L - 16V / ALFA 1.8 / 2.0L - 16V	4/5	GASOLINA	ADM	RA 1252	113,10	33,60	6,99	STD	45	C
				ESC	RE 1253	108,45	28,20	6,97	STD	45	C
PALIO / PALIO WEEKEND / PUNTO / SIENA / STRADA	1.4L - 8V FIRE / EVO	4	FLEX	ADM	RA 1271	98,20	33,20	4,99	STD	45	C
				ESC	RE 1272	98,80	27,30	4,98	STD	45	C
DUCATO MULTIJET	2.3L - 16V	4	DIESEL	ADM	RA 2383	120,40	30,00	5,99	STD	45	C
	F1A			ESC	RE 2384	120,40	30,00	5,98	STD	45	C
DUCATO / DAILY / NEW DAILY TD (1996...)	2.5L / 2.8L	4	DIESEL	ADM	RA 2214	120,75	40,90	7,99	STD	30	A
	(ASPIRADO e TURBINADO) EURO I e EURO II			ESC	RE 2215	121,90	35,80	7,98	STD	45	A
DUCATO MAXI TD 34 / 49 / 59.12 / NEW DAILY TD (1990...)	2.5L / 2.8L	4	DIESEL	ADM	RA 2234	122,00	43,50	7,99	STD	30	A
	(ASPIRADO) EURO I			ESC	RE 2235	122,00	36,50	7,98	STD	45	A
MILLE / PALIO / NOVO PALIO	1.0 - 8V	4	GASOLINA	ADM	RA 1293	96,80	31,40	6,99	STD	45	F
	FIRE / FLEX		ALCOOL	ESC	RE 1294	97,15	27,15	6,98	STD	45	F
MILLE ECONOMY / PALIO FIRE ECONOMY /	1.0 / 1.4L - 8V	4	GASOLINA	ADM	RA 1313	98,20	31,40	4,99	STD	45	C
MILLE WAY ECONOMY	FIRE / EVO (SET 2008...)		ALCOOL	ESC	RE 1272	98,80	27,30	4,98	STD	45	C
TEMPRA SW / TEMPRA / TIPO	2.0L - 16V	4	GASOLINA	ADM	RA 1105	127,93	34,40	6,98	STD	45	F
	INJEÇÃO ELETRÔNICA			ESC	RE 1106	125,60	28,40	6,98	STD	45	F
PALIO / SIENA / MAREA / BRAVO / DOBLÔ	1.6L - 16V TORQUE	4	GASOLINA	ADM	RA 1126	102,50	30,40	6,99	STD	45	F
LINEA LX / HLX 09/11	1.9 - 16V LX / HLX		FLEX	ESC	RE 1127	102,35	30,00	6,98	STD	45	F
DUCATO / DAILY	2.8L - INJEÇÃO DIRETA	4	DIESEL	ADM	RA 2234	122,00	43,50	7,99	STD	30	A
	(ASPIRADO) EURO I e EURO II			ESC	RE 2215	121,90	35,80	7,98	STD	45	A

suitable for

VÁLVULAS - CATÁLOGO DE APLICAÇÕES | VALVES - APPLICATIONS CATALOG

CARRO DE PASSAGEIRO / COMERCIAIS / CAMINHÕES / ÔNIBUS / MÁQUINAS AGRÍCOLAS / MOTOCICLETAS / ESPECIAIS / COMPETIÇÃO
CARS / COMMERCIALS / TRUCKS / BUSES / AGRICULTURAL MACHINES / MOTORCYCLES / SPECIALS / COMPETITION

MODELOS	MOTORES	CIL.	COMB.	FUNÇÃO	Nº RIC	C. TOTAL	Ø CABEÇA	Ø HASTE	HASTE	ÂNGULO	PTA
MODELS	ENGINES	CYL.	FUEL	FUNCTION	RIC P/N	TOTAL LENGTH	Ø HEAD	Ø STEM	STEM	ANGLE	TIP
FIAT											
PALIO/ SIENA FASE II / 500 (ANO 2000)	FIRE MPFI 1.3L - 16V	4	FLEX	ADM	RA 1404	95,40	26,90	5,99	STD	45	C
				ESC	RE 1405	94,70	22,40	5,98	STD	45	C
NOVO UNO (APÓS 2011) / NOVO PALIO, PUNTO, SIENA, GRAND SIENA (APÓS 2013) / CINQUECENTO (APÓS 2012)	EVO 1.4 - 8V	4	GASOLINA	ADM	RA 1416	99,90	33,25	4,99	STD	45	C
			FLEX	ESC	RE 1417	100,45	27,95	4,98	STD	45	C
ARGO / BRAVO (2011...) / DOBLO (2010...) / GRAND SIENA (2012...) / IDEA (2011-16) / LINEA (2015-16) / NOVO PALIO (2012...)	MOTOR E-TORQ 1.8 16V	4	FLEX	ADM	RA 1452	109,50	31,50	5,95	STD	45	C
				ESC	RE 1453	117,50	25,00	5,93	STD	45	C
PALIO WEEKEND (2013...) / PUNTO (2013-2017) / STRADA (2013...) / TORO (2017...) / RENEGADE	1.4L / 8V	4	FLEX	ADM	RA 1271	98,20	33,20	4,99	STD	45	C
				ESC	RE 1464	98,75	27,95	4,99	STD	30	C
UNO / MOBI / ARGO / CRONOS	(FIRE FLY 1.0L - 6V 3 CILINDROS) / (FIRE FLY 1.3L - 8V 4 CILINDROS)	3/4	FLEX	ADM	RA 1473	96,80	36,10	4,99	STD	45	C
				ESC	RE 1474	95,20	29,10	4,99	STD	45	C

FORD WILLYS

JEEP/ RURAL/ PICK UP/ AERO WILLYS	2600/3000 (1973 ...)	4	GASOLINA	ADM	RA 1001	115,19	44,45	9,49	STD	45	L
	2600 (Até 1964)			ESC	RE 1002	117,16	32,66	8,64	STD	45	M
ITAMARATY	2600 (1964...)	4	GASOLINA	ESC	RE 1003	117,40	35,83	8,64	STD	45	M
JEEP / RURAL / PICK UP/ MAVERICK	3000 (1973...)	4	GASOLINA	ADM	RA 1001	115,19	44,45	9,49	STD	45	L
				ESC	RE 1103	130,10	35,84	8,64	STD	45	M

FORD / AUTOLATINA

BELINA / DEL REY / ESCORT / PAMPA / VERONA	(VOLKSWAGEN) AP 600 / 800 / 2000 - ÁGUA - AP 2000 - 2.0 (NOV 1990 ...)	4	GASOLINA	ADM	RA 1032	98,65	37,95	7,96	STD	45	C
VERSAILLES			ALCOOL	ESC	RE 1033	98,45	33,15	7,94	STD	45	C

FORD

BELINA II / CORCEL II / DEL REY / ESCORT / ESCORT HOBBY / PAMPA	CHT 1.3L / AE 1000	4	GASOLINA	ADM	RA 1038	96,55	32,10	6,98	STD	45	G
	CH 1.6L - AE 1600		ALCOOL	ESC	RE 1039	96,17	28,40	6,96	STD	45	G
CORCEL II / BELINA II / DEL REY	OHC 1.4 / 1.6L	4	GASOLINA	ADM	N.T.						
	(NOV 1982...)		ALCOOL	ESC	RE1107	89,26	28,40	6,97	STD	45	G
BELINA II / CORCEL II / DEL REY / ESCORT / PAMPA / VERONA	CHT1.6L / AE 1600	4	ALCOOL	ADM	RA 1038	96,55	32,10	6,98	STD	45	G
				ADM	RA 1085	97,02	36,40	6,98	STD	45	G
				ESC	RE 1039	96,17	28,40	6,96	STD	45	G
FIESTA / KA / ENDURA	1.0L - 8V	4	GASOLINA	ADM	RA 1108	104,05	32,90	7,03	STD	45	C
	1.3L - 8V			ADM	RA 1109	104,05	34,50	7,03	STD	45	C
	1.0/1.3L - 8V			ESC	RE 1110	104,37	29,00	7,00	STD	45	C
ESCORT (1997...)	1.8 / 2.0 L - 16V	4	GASOLINA	ADM	RA 1164	97,10	32,00	6,02	STD	45	C
MONDEO (1997...)	ZETEC - 3 CANALETAS			ESC	RE 1165	96,85	28,00	6,01	STD	45	C
ESCORT (1997...)	1.8 / 2.0 L - 16V	4	GASOLINA	ADM	RA 1319	97,05	31,90	6,04	STD	45	A
MONDEO (1994 ATÉ 1996)	1 CANALETA			ESC	RE 1320	96,70	28,00	6,02	STD	45	A
ECOSPORT / MONDEO / FUSION / RANGER	2.0L - 16V DURATEC	4	FLEX	ADM	RA 1339	103,45	35,00	5,48	STD	45	A
	2.3L - 16V (01 CANALETA)			ESC	RE 1340	104,65	30,00	5,47	STD	45	A

suitable for

VÁLVULAS - CATÁLOGO DE APLICAÇÕES | VALVES - APPLICATIONS CATALOG

CARRO DE PASSAGEIRO / COMERCIAIS / CAMINHÕES / ÔNIBUS / MÁQUINAS AGRÍCOLAS / MOTOCICLETAS / ESPECIAIS / COMPETIÇÃO
 CARS / COMMERCIALS / TRUCKS / BUSES / AGRICULTURAL MACHINES / MOTORCYCLES / SPECIALS / COMPETITION

MODELOS	MOTORES	CIL.	COMB.	FUNÇÃO	N° RIC	C. TOTAL	Ø CABEÇA	Ø HASTE	HASTE	ÂNGULO	PTA
MODELS	ENGINES	CYL	FUEL	FUNCTION	RIC P/N	TOTAL LENGTH	Ø HEAD	Ø STEM	STEM	ANGLE	TIP

FORD

suitable for

FIESTA / KA / COURIER/ (ANTIGA - RA 1297/ RE 1298)	1.0L - 8V	4	GASOLINA	ADM	RA 1168	111,08	32,45	5,97	STD	45	C
	ZETEC / ROCAM			ESC	RE 1169	110,56	28,00	5,95	STD	45	C
FIESTA / KA / COURIER	1.4 / 1.6L - 16V	4	GASOLINA	ADM	RA 1166	97,43	28,15	5,96	STD	45	C
	ZETEC / ROCAM			ESC	RE 1167	99,64	24,13	5,95	STD	45	C
ECOSPORT / MONDEO / FOCUS / FIESTA / KA / COURIER	1.6L - 8V	4	GASOLINA	ADM	RA 1275	109,60	40,00	5,96	STD	45	C
	ZETEC / ROCAM		FLEX	ESC	RE 1276	109,80	34,00	5,96	STD	45	C
TRATOR: 4600 / 4610 / 5600 / 5610 / 6600 / 6610	FNH 201 / 256 / 268	3/4	DIESEL	ADM	RA 2058	145,86	45,84	9,43	STD	45	K
				ESC	RE 2059	145,86	38,35	9,41	STD	45	J
CARGO	4.4L / 6.6L	6	DIESEL	ADM	RA 3254	145,90	46,65	9,43	STD	30	K
				ESC	RE 3255	145,85	40,15	9,41	STD	45	K
CARGO	7.8L	6	DIESEL	ADM	RA 3256	156,50	47,50	9,43	STD	30	K
				ESC	RE 3257	156,50	43,00	9,41	STD	45	K
NEW HOLLAND - GENESIS (NA) - SÉRIE 30	SÉRIE 30	6	DIESEL	ADM	RA 2226	146,75	47,40	9,43	STD	30	D
				ESC	RE 2227	146,50	42,98	9,42	STD	45	D
NEW FIESTA/FOCUS/ECOSPORT (2011...)	1.6L - 16V	4	FLEX	ADM	RA 1412	99,15	30,10	5,97	STD	45	C
	SIGMA			ESC	RE 1413	101,80	24,20	5,96	STD	45	C
TRANSIT / RANGER	TDCI 2.2L / 3.2L	4/5	DIESEL	ADM	RA 2465	122,30	29,80	6,94	STD	30	C
				ESC	RE 2466	122,05	25,80	6,93	STD	45	C
FORD TRANSIT	2.4L - 16V	4	DIESEL	ADM	RA 2454	122,10	31,40	6,94	STD	30	C
	D4FA			ESC	RE 2455	122,50	27,85	6,93	STD	45	C
KA	1.0 - 12V	3	FLEX	ADM	RA 1477	96,30	27,20	4,97	STD	45	C
				ESC	RE 1478	98,00	23,00	4,96	STD	30	C
KA	1.5 - 12V	3	FLEX	ADM	RA 1495	99,10	34,10	5,44	STD	45	C
				ESC	RE 1496	107,15	28,60	5,43	STD	45	C

GENERAL MOTORS

ASTRA / VECTRA / CALIBRA / ZAFIRA (2009...)	2.0L - 8V e 1.6L - 8V	4	GASOLINA	ADM	RA 1371	104,20	41,80	7,01	STD	44	C
	Com Rebaixo na Ponta		ALCOOL	ESC	RE 1372	104,00	36,50	6,99	STD	44	C
CRUZE (2011...)	ECOTEC 6 (1.8L- 16V) N18XFF	4	FLEX	ADM	RA 1432	102,38	31,35	4,97	STD	45°	C
				ESC	RE 1433	101,80	27,60	4,96	STD	45°	C
MONZA / KADETT / IPANEMA / S10 / BLAZER	2.0 / 2.2L	4	GASOLINA	ADM	RA 1042	104,20	43,00	7,01	STD	44	E
	CARBURADO		ALCOOL	ESC	RE 1043	104,20	36,50	6,99	STD	44	E
CORSA	1.0L - 16V	4	GASOLINA	ADM	RA 1137	104,00	25,00	5,96	STD	45	C
				ESC	RE 1138	103,20	20,00	5,94	STD	45	C
CORSA	1.0 / 1.4L - 8V	4	GASOLINA	ADM	RA 1111	104,60	33,00	7,01	STD	44	E
	EFI - INJEÇÃO			ESC	RE 1112	104,60	29,00	6,99	STD	44	E
CORSA / TIGRA	1.4 / 1.6L - 16V	4	GASOLINA	ADM	RA 1124	103,12	31,00	5,96	STD	45	C
				ESC	RE 1125	102,22	27,50	5,94	STD	45	C

VÁLVULAS - CATÁLOGO DE APLICAÇÕES | VALVES - APPLICATIONS CATALOG

CARRO DE PASSAGEIRO / COMERCIAIS / CAMINHÕES / ÔNIBUS / MÁQUINAS AGRÍCOLAS / MOTOCICLETAS / ESPECIAIS / COMPETIÇÃO
 CARS / COMMERCIALS / TRUCKS / BUSES / AGRICULTURAL MACHINES / MOTORCYCLES / SPECIALS / COMPETITION

MODELOS	MOTORES	CIL.	COMB.	FUNÇÃO	N° RIC	C. TOTAL	Ø CABEÇA	Ø HASTE	HASTE	ÂNGULO	PTA
MODELS	ENGINES	CYL	FUEL	FUNCTION	RIC P/N	TOTAL LENGTH	Ø HEAD	Ø STEM	STEM	ANGLE	TIP
GENERAL MOTORS											
CORSA/ MERIVA / TIGRA	1.6L - 8V EFI	4	GASOLINA	ADM	RA 1113	101,50	38,00	7,01	STD	44	E
	1.8L - 8V - MPFI			ESC	RE 1114	101,50	31,00	6,99	STD	44	E
CELTA / CORSA CLASSIC (2002 até 2008)	1.0 - 8V (70 / 71CV)	4	GASOLINA	ADM	RA 1289	104,95	33,00	7,01	STD	44	E
NOVO CORSA (2002 ATÉ 2005)			ALCOOL	ESC	RE 1290	105,00	29,00	6,99	STD	44	E
CELTA/ CORSA / COBALT / SPIN / MONTANA /	1.0L - 8V SOHC (2006...)	4	FLEX	ADM	RA 1301	104,70	33,00	5,96	STD	44	C
NOVO PRISMA/ CLASSIC/ CELTA	4L 1.0 16V										
ONIX	4L 1.0 8V										
CELTA/ CORSA	1.0L - 8V SOHC (2006...)			ESC	RE 1302	104,75	29,00	5,94	STD	44	C
COBALT/ SPIN/ MONTANA	4L 1.8L 16V										
NOVO PRISMA / CLASSIC / CELTA	4L 1.0L 16V										
ONIX	4L 1.0L 8V										
NOVO CORSA / MERIVA / MONTANA (2006...)	1.8L - 8V	4	FLEX	ADM	RA 1303	101,65	38,00	5,96	STD	44	C
				ESC	RE 1304	101,55	31,00	5,94	STD	44	C
NOVO CORSA (2007...)/ CELTA/ PRISMA / MERIVA/ COBALT/ MONTANA/ AGILE/ ONIX (SET. 2008...)	1.4 L - 8V VHC-E	4	FLEX	ADM	RA 1305	105,05	38,00	5,96	STD	44	C
				ESC	RE 1306	105,05	31,00	5,94	STD	44	C
NOVO CORSA / MERIVA / MONTANA (ATÉ 2005)	1.8L - 8V	4	GASOLINA	ADM	RA 1258	101,50	38,00	7,01	STD	44	E
	(POWERTRAIN)		FLEX	ESC	RE 1259	101,50	31,00	6,99	STD	44	E
MERIVA	1.8L -16V	4	GASOLINA	ADM	RA 1273	101,45	31,30	5,96	STD	45	C
	DOHC (2003...)		FLEX	ESC	RE 1274	101,50	27,50	5,94	STD	45	C
ASTRA / VECTRA / CALIBRA (1997...)	1.8 / 2.0 / 2.4 L - 16V	4	GASOLINA	ADM	RA 1158	102,10	32,00	5,96	STD	45	C
	MPFI			ESC	RE 1159	92,25	29,00	5,95	STD	45	C
OPALA / CARAVAN / VERANEIO / C10 / C20 / A10 / A20 (1969 até 1980)	151 / 250	4/ 6	GASOLINA ALCOOL	ADM	RA 1026	124,74	43,68	8,67	STD	45	J
				ADM	RA 1048	124,74	43,68	8,76	+3	45	J
				ADM	RA 1050	124,74	43,68	9,06	+6	45	J
				ADM	RA 1052	124,74	43,68	9,44	+12	45	J
				ESC	RE 1027	125,03	38,10	8,66	STD	45	J
				ESC	RE 1049	125,03	38,10	8,75	+3	45	J
				ESC	RE 1051	125,03	38,10	9,05	+6	45	J
				ESC	RE 1053	125,03	38,10	9,43	+12	45	J
C10 / C14 / C16 / C60 / CHEVROLET BRASIL	261 - 4.3L	4	GASOLINA	ADM	RA 1086	162,21	47,62	8,67	STD	30	J
(1966 até 1981)			ALCOOL	ESC	RE 1027	125,03	38,10	8,66	STD	45	J
CHEVETTE/ MARAJÓ/ HATCH/ CHEVY 500	1.4 / 1.6L	4	GASOLINA ALCOOL	ADM	RA 1028	98,50	39,00	7,98	STD	44	A
				ADM	RA 1066	98,50	39,00	8,05	+3	44	A
				ADM	RA 1068	98,50	39,00	8,13	+6	44	A
				ESC	RE 1029	99,00	32,00	7,96	STD	44	A
				ESC	RE 1067	99,00	32,00	8,03	+3	44	A
				ESC	RE 1069	99,00	32,00	8,11	+6	44	A

suitable for

VÁLVULAS - CATÁLOGO DE APLICAÇÕES | VALVES - APPLICATIONS CATALOG

CARRO DE PASSAGEIRO / COMERCIAIS / CAMINHÕES / ÔNIBUS / MÁQUINAS AGRÍCOLAS / MOTOCICLETAS / ESPECIAIS / COMPETIÇÃO
 CARS / COMMERCIALS / TRUCKS / BUSES / AGRICULTURAL MACHINES / MOTORCYCLES / SPECIALS / COMPETITION

MODELOS	MOTORES	CIL.	COMB.	FUNÇÃO	N° RIC	C. TOTAL	Ø CABEÇA	Ø HASTE	HASTE	ÂNGULO	PTA
MODELS	ENGINES	CYL	FUEL	FUNCTION	RIC P/N	TOTAL LENGTH	Ø HEAD	Ø STEM	STEM	ANGLE	TIP

GENERAL MOTORS

suitable for

MONZA	1.8L - FASE I	4	GASOLINA	ADM	RA 1036	106,10	41,00	7,98	STD	44	E
	CARBURADO		ALCOOL	ESC	RE 1037	106,10	35,00	7,96	STD	44	E
MONZA	1.6L	4	GASOLINA	ADM	RA 1070	106,10	35,00	7,98	STD	44	E
			ALCOOL	ESC	RE 1071	106,10	32,00	7,96	STD	44	E
MONZA / OMEGA / KADETT / ASTRA SW / SUPREMA /	1.8 / 2.0L - FASE II	4	GASOLINA	ADM	RA 1104	104,20	42,00	7,01	STD	44	E
IPANEMA / VECTRA	CARBURADO / INJEÇÃO		ALCOOL	ESC	RE 1043	104,20	36,50	6,99	STD	44	E
S10 TURBO DIESEL DURAMAX / TRAIL BLAZER	2.8 L - 16V	4	DIESEL	ADM	RA 2481	107,65	32,00	5,97	STD	45	C
				ESC	RE 2482	107,85	29,30	5,96	STD	45	C
BLAZER / S10	MOTOR VORTEC 4.3L - 12 V - 6 CILINDROS	6	GASOLINA	ADM	RA 1483	124,10	49,30	8,67	STD	45	A
				ESC	RE 1484	125,10	38,00	8,66	STD	45	A
CORSA	14L - 8V EFI OHC 1994 ATÉ 1996	4	FLEX	ADM	RA 1498	104,65	38,00	7,00	STD	45	A
				ESC	RE 1499	104,85	31,00	6,98	STD	45	A
CRUZE / TRACKER	14L - 16V (2017 Á 2022) ECOTEC TURBO SIDI	4	FLEX	ADM	RA 1505	106,65	27,85	4,97	STD	45	C
				ESC	RE 1506	105,65	23,00	4,96	STD	45	C

HONDA

CIVIC (2001...)	1.6 / 1.7L 16V (V-TEC / V-TEC-E)	4	GASOLINA	ADM	RA 1347	118,55	30,00	5,48	STD	45	A
				ESC	RE 1348	115,95	26,00	5,45	STD	45	A
FIT	1,4L - 8V	4	GASOLINA	ADM	RA 1389	118,30	32,00	5,48	STD	45	A
			FLEX	ESC	RE 1390	118,10	27,90	5,46	STD	45	A
CITY / NEW FIT (2005...)	1,5L - 16V	4	FLEX	ADM	RA 1402	118,65	27,50	5,48	STD	45	E
	VTEC			ESC	RE 1403	117,65	23,00	5,46	STD	45	E
NEW CIVIC	R18A1 - 1.8 - 16V	4	FLEX	ADM	RA 1448	116,75	32,00	5,49	STD	45	A
				ESC	RE 1348	115,95	26,00	5,45	STD	45	A
CIVIC CVR	R20Z5 4 (2.0 -16V) 2014 EM DIANTE	4	FLEX	ADM	RA 1502	117,80	33,00	5,48	STD	45	A
				ESC	RE 1348	115,95	26,00	5,45	STD	45	A

HYUNDAI

H100 (1998 ATÉ 2004) / H1 (1999 ATÉ 2000) / PORTER (2000 ATÉ 2003)	2.5L	4	DIESEL	ADM	RA 2309	132,00	42,00	7,97	STD	45	A
				ESC	RE 2310	132,00	36,00	7,95	STD	45	A
H100 / TERRACAM/ GALLOPER	2.5L	4	DIESEL	ADM	RA 2373	130,20	40,00	7,97	STD	45	A
HR (2008- 2013)	D4BH			ESC	RE 2374	129,90	34,00	7,94	STD	45	A
I30 / TUCSON / (2005...)	2.0L - 16V	4	GASOLINA	ADM	RA 1406	114,30	32,00	5,97	STD	45	A
	G4GC BETA II			ESC	RE 1407	116,70	27,50	5,96	STD	45	A
VELOSTER / HB20	1.6- 16V	4	GASOLINA	ADM	RA 1446	93,20	31,55	5,47	STD	45	A
			FLEX	ESC	RE 1447	92,60	26,00	5,46	STD	45	A
HB 20	1.0 12V	3	FLEX	ADM	RA 1426	92,85	26,90	5,48	STD	45°	A
				ESC	RE 1427	93,42	24,15	5,46	STD	45°	A
HYUNDAI HR (2014 ...)	2500 D4 CB 16V	4	DIESEL	ADM	RA 2430	110,57	31,90	6,97	STD	45°	C
				ESC	RE 2431	110,55	28,00	6,95	STD	45°	C

VÁLVULAS - CATÁLOGO DE APLICAÇÕES / VALVES - APPLICATIONS CATALOG

CARRO DE PASSAGEIRO / COMERCIAIS / CAMINHÕES / ÔNIBUS / MÁQUINAS AGRÍCOLAS / MOTOCICLETAS / ESPECIAIS / COMPETIÇÃO
 CARS / COMMERCIALS / TRUCKS / BUSES / AGRICULTURAL MACHINES / MOTORCYCLES / SPECIALS / COMPETITION

MODELOS	MOTORES	CIL.	COMB.	FUNÇÃO	N° RIC	C. TOTAL	Ø CABEÇA	Ø HASTE	HASTE	ÂNGULO	PTA
MODELS	ENGINES	CYL	FUEL	FUNCTION	RIC P/N	TOTAL LENGTH	Ø HEAD	Ø STEM	STEM	ANGLE	TIP
KIA											
BESTA (1993 até 1998) / SPORTAGE (1994 até 1998)	2.0L / 2.2L	4	DIESEL	ADM	RA 2119	107,95	41,15	7,98	STD	45	A
				ESC	RE 2120	107,52	36,00	7,98	STD	45	A
BESTA (1993 até 1998)	2.7L	4	DIESEL	ADM	RA 2117	114,40	41,10	8,97	STD	45	E
				ESC	RE 2118	114,90	35,00	8,95	STD	30	E
BESTA GS (1997 até 2001 / BONGO K2700 (Até 2009)	2.7L	4	DIESEL	ADM	RA 2250	112,90	44,00	8,47	STD	45	A
BESTA GS (2000 até 2005)	3.0L			ESC	RE 2251	112,80	37,50	8,45	STD	45	A
SPORTAGE (2005...)	2.0L - 16V G4GC BETA II	4	GASOLINA	ADM	RA 1406	114,40	32,00	5,97	STD	45	A
				ESC	RE 1407	116,80	27,50	5,96	STD	45	A
KIA PICANTO	1.0 12V	3	FLEX	ADM	RA 1426	92,85	26,90	5,48	STD	45	A
				ESC	RE 1427	93,42	24,15	5,46	STD	45	A
KIA CERATO / SOUL	1.6 - 16V	4	FLEX	ADM	RA 1446	93,20	31,55	5,47	STD	45	A
				ESC	RE 1447	92,60	26,00	5,46	STD	45	A
BONGO	K2500 2.5 D 12> Motor D4 CB	4	DIESEL	ADM	RA 2430	110,57	31,90	6,97	STD	45	C
				ESC	RE 2431	110,55	28,00	6,95	STD	45	C
MAXION / PERKINS											
MASSEY FERGUNSON	3.152 II / 4.203 II - PERKINS	3/4	DIESEL	ADM	RA 2006	114,30	38,96	7,91	STD	45	A
				ESC	RE 2007	114,30	33,40	7,91	STD	45	A
CASE / MASSEY FERGUNSON	3.152 ID / 4.203 ID - PERKINS	3/4	DIESEL	ADM	RA 2012	114,29	38,96	7,91	STD	45	A
				ESC	RE 2013	114,29	33,40	7,91	STD	45	A
CASE / GM / MASSEY FERGUNSON	4.236 ID / 4.248 ID / 6.354 ID - PERKINS	3/4/6	DIESEL	ADM	RA 2022	122,92	44,28	9,47	STD	45	A
				ESC	RE 2023	123,32	36,57	9,46	STD	45	A
CASE / FORD / GM / MASSEY FERGUNSON	6.357 II - PERKINS	6	DIESEL	ADM	RA 2004	132,40	46,89	9,49	STD	45	A
				ESC	RE 2005	132,40	40,54	9,45	STD	45	A
CASE / FORD / GM / MASSEY FERGUNSON	6.358 ID - PERKINS	6	DIESEL	ADM	RA 2072	139,50	45,24	9,47	STD	45	A
				ESC	RE 2073	139,82	38,89	9,46	STD	45	A
GM / VW / MASSEY FERGUNSON	Q20B4.236 / Q20B6.354 - PERKINS	4/6	DIESEL	ADM	RA 2078	122,91	44,22	9,47	STD	45	C
				ESC	RE 2079	123,31	36,57	9,46	STD	45	C
GM	S4 (ASPIRADO) - MAXION	4	DIESEL	ADM	RA 2128	122,72	44,22	9,48	STD	45	C
				ESC	RE 2130	123,12	38,20	9,46	STD	45	C
GM	S4 / S4T / S4T PLUS (TURBO) - MAXION	4	DIESEL	ADM	RA 2129	122,57	44,22	9,47	STD	30	C
				ESC	RE 2130	123,12	38,20	9,46	STD	45	C
MBB	GEMINI HS/HST 2.5L (TURBO)	4	DIESEL	ADM	RA 2162	116,35	38,92	7,97	STD	30	C
				ESC	RE 2163	116,51	36,50	7,95	STD	45	C
MAZDA											
HYSTER/ YALE	FE 2.0L	4	GASOLINA	ADM	RA 1438	111,90	44,00	8,03	STD	30	A
				ESC	RE 1439	111,70	36,00	8,02	STD	30	A

suitable for

VÁLVULAS - CATÁLOGO DE APLICAÇÕES | VALVES - APPLICATIONS CATALOG

CARRO DE PASSAGEIRO / COMERCIAIS / CAMINHÕES / ÔNIBUS / MÁQUINAS AGRÍCOLAS / MOTOCICLETAS / ESPECIAIS / COMPETIÇÃO
 CARS / COMMERCIALS / TRUCKS / BUSES / AGRICULTURAL MACHINES / MOTORCYCLES / SPECIALS / COMPETITION

MODELOS	MOTORES	CIL.	COMB.	FUNÇÃO	N° RIC	C. TOTAL	Ø CABEÇA	Ø HASTE	HASTE	ÂNGULO	PTA
MODELS	ENGINES	CYL	FUEL	FUNCTION	RIC P/N	TOTAL LENGTH	Ø HEAD	Ø STEM	STEM	ANGLE	TIP
MERCEDES BENZ - FREIO MOTOR											
CAMINHÕES - ÔNIBUS: 721C / 914C	OM 447 LA / 449 LA / 457 BR 458 ELETRÔNICO	6	DIESEL	FREIO- MOTOR	RAE 6003	90,40	17,00	7,99	STD	45	E
CAMINHÕES - ÔNIBUS	OM457 LA - LS1938 / 1938S / 0-500	5/6	DIESEL	FREIO- MOTOR	RAE 6004	86,90	17,00	7,99	STD	45	E
CAMINHÕES - ÔNIBUS: 721C / 914C	OM 904 / 906 / 924 / 926 - 712C / 914C	6	DIESEL	FREIO- MOTOR	RAE 6018	81,60	15,20	5,97	STD	20	A

MERCEDES BENZ

suitable for

CLASSE A 160 (1999...)	1.6L 8V (50HC)	4	GASOLINA	ADM	RA 1420	103,15	40,00	5,95	STD	45	A
				ESC	RE 1421	102,73	34,00	6,96	STD	45	A
CAMINHÕES: L312 / 1111	OM-312 / OM-321 / OM-322/ OM-324	4/6	DIESEL	ADM	RA 2044	140,50	40,00	8,94	STD	45	I
	ASPIRADO			ESC	RE 2045	140,50	36,00	8,93	STD	45	I
CAMINHÕES: 608/ 708/ 1013/ 1017/ 1113/ 1313/ 1413/ 1417 / 1513 / 1613 / 1617 / 2013 / 2213	OM-314 / OM-352 (ASPIRADO)	4/6	DIESEL	ADM	RA 2024	140,50	44,00	8,94	STD	45	I
	OM-314A / OM-352A (TURBO)			ESC	RE 2025	140,50	36,00	9,93	STD	45	I
CAMINHÕES: 709 / 1115 / 1214 / 1315 / 1414 / 1614	OM-364 / OM-366 (ASPIRADO)	4/6	DIESEL	ADM	RA 2082	140,50	42,80	8,94	STD	30	I
				ESC	RE 2083	140,50	36,00	9,93	STD	45	I
CAMINHÕES: 812 / 912 / 1218 / 1318 / 1418 / 1618	OM-364A / OM-364LA / OM- 366A / OM-366LA	4/6	DIESEL	ADM	RA 2080	140,50	42,00	8,94	STD	30	I
	OM 352A			ESC	RE 2081	140,56	36,00	9,93	STD	45	I
CAMINHÕES: LP-326 / LP-331	OM- 332 / OM-326 (ASPIRADO)	6	DIESEL	ADM	RA 3054	130,00	37,00	8,94	STD	45	I
				ESC	RE 3055	165,50	32,00	8,93	STD	45	I
CAMINHÕES: 1418/1419/1420/ 1517/1518/1519/1929/1624 / 1923/1924/2024/2219/ 2224 / 2623 /2624	OM-355 (ASPIRADO)	5/6	DIESEL	ADM	RA 3020	129,80	42,00	8,94	STD	45	I
	OM 346/ 355.5/ 355.6 (ASPIRADO)			ESC	RE 3021	165,30	37,00	8,93	STD	45	I
CAMINHÃO: 1932	OM-355.6A (TURBO)	6	DIESEL	ADM	RA 3064	130,60	42,00	8,94	STD	30	I
				ESC	RE 3065	165,90	37,00	8,93	STD	30	I
CAMINHÕES: 1933 / 1934	OM-355.5A (TURBO)	5/6	DIESEL	ADM	RA 3062	129,80	42,00	8,94	STD	30	I
	OM-355.6A (TURBO + INTERCOOLER)			ESC	RE 3063	165,30	37,00	8,93	STD	30	I
CAMINHÕES / ÔNIBUS	OM 447 - OM 449 A / LA	5/6	DIESEL	ADM	RA 3236	142,50	58,90	11,94	STD	30	I
	ASPIRADO / TURBO			ESC	RE 3237	142,50	51,00	11,93	STD	45	I
CAMINHÕES: OF-1620 / 1621 - OF1318 / LK-1621 / 0-371	OM - 364LA / 366LA	4/ 6	DIESEL	ADM	RA 2131	140,50	42,00	8,94	STD	20	I
	(TURBO + INERCOOLER) EURO II			ESC	RE 2132	140,50	36,00	9,93	STD	45	I

VÁLVULAS - CATÁLOGO DE APLICAÇÕES / VALVES - APPLICATIONS CATALOG

CARRO DE PASSAGEIRO / COMERCIAIS / CAMINHÕES / ÔNIBUS / MÁQUINAS AGRÍCOLAS / MOTOCICLETAS / ESPECIAIS / COMPETIÇÃO
 CARS / COMMERCIALS / TRUCKS / BUSES / AGRICULTURAL MACHINES / MOTORCYCLES / SPECIALS / COMPETITION

MODELOS	MOTORES	CIL.	COMB.	FUNÇÃO	N° RIC	C. TOTAL	Ø CABEÇA	Ø HASTE	HASTE	ÂNGULO	PTA
MODELS	ENGINES	CYL	FUEL	FUNCTION	RIC P/N	TOTAL LENGTH	Ø HEAD	Ø STEM	STEM	ANGLE	TIP

MERCEDES BENZ

suitable for

COMERCIAIS / VANS: SPRINTER / HS-310-D (1997 ATÉ 1998) / HS-312-D (1999 ATÉ 2001)	GEMINI HS / HST - 2,5L (TURBO)	4	DIESEL	ADM	RA 2162	116,35	38,92	7,97	STD	30	C
	MAXION			ESC	RE 2163	116,51	36,50	7,95	STD	45	C
SPRINTER CDI	OM 611 - 16V	4	DIESEL	ADM	RA 2375	104,05	30,20	6,96	STD	45	A
				ESC	RE 2376	104,40	28,50	6,96	STD	45	A
MBB	OM 457LA / OM 460LA	6	DIESEL	ADM	RA 3487	145,00	45,60	8,94	STD	30	I
				ESC	RE 3488	145,00	41,10	8,93	STD	45	I
SPRINTER / COMPASS	SPRINTER / COMPASS	6	DIESEL	ADM	RA 2489	108,95	28,65	5,97	STD	45	C
				ESC	RE 2490	109,10	24,65	5,96	STD	45	C

MITSUBISHI

PAJERO TR4/ LANCER/ SPACE WAGON/ PRÖTON	1.6/ 1.8/ 2.0 16V	4	GASOLINA	ADM	RA 1418	110,10	30,20	5,96	STD	45	A
	4G92/ 4G93/ 4G94			FLEX	ESC	RE 1419	113,87	26,90	5,95	STD	45
L200 / L300	2.3L	4	DIESEL	ADM	RA 2269	136,50	40,00	7,97	STD	45	A
PAJERO / GALANT (1984 ATÉ 1999)	4D55 / 4D56			ESC	RE 2270	136,30	34,00	7,95	STD	45	A
L200 /L300	2.5L	4	DIESEL	ADM	RA 2373	130,20	40,00	7,96	STD	45	A
	D4BH / 4D56 / 4D56T			ESC	RE 2374	129,90	34,00	7,94	STD	45	A
PAJERO FULL / L200 TRITON (2008 ATÉ 2016)	4M41 3.2 L 16V	4	DIESEL	ADM	RA 2485	115,65	33,00	6,58	STD	45	A
				ESC	RE 2486	115,40	31,00	6,55	STD	45	A

MWM

VALMET	KH-112 / D222	1/2/ 3/4	DIESEL	ADM	RA 2046	128,99	41,00	9,96	STD	45	D
				ESC	RE 2047	129,00	37,00	9,95	STD	45	D
AGRALE / FIAT ALLIS / FORD / MASSEY FERGUNSON / VALMET / VW	D-225 / D-226 / D-229 / D-237	2/3/ 4/6	DIESEL	ADM	RA 2018	117,00	41,00	8,96	STD	45	C
	ASPIRADO			ESC	RE 2019	117,00	38,00	8,96	STD	45	C
FIAT ALLIS / FORD / VALMET /VW	TD-229EC-4 / TD-229EC-6	4/ 6	DIESEL	ADM	RA 2076	117,02	42,00	8,96	STD	30	C
	TURBO			ESC	RE 2077	116,87	38,00	8,96	STD	45	C
SÉRIE X10	3.10 / 4.10 / 6.10 (ASPIRADO)	4/ 6	DIESEL	ADM	RA 2133	126,00	45,00	8,96	STD	30	C
	3.10T / 4.10T / 6.10T (TURBO) - 6.10TCA (TURBO + AFTERC.)			ESC	RE 2134	126,00	41,00	8,96	STD	45	C
GM - SPRINT	4.07T / 4.07TCA	4/ 6	DIESEL	ADM	RA 2160	105,15	33,00	6,96	STD	30	C
	6.07T / 6.07TCA			ESC	RE 2161	105,15	40,00	6,96	STD	45	C

NISSAN

FRONTIER / X TRAIL (2006...)	2.5 L - 16V	4	DIESEL	ADM	RA 2396	106,75	28,00	5,97	STD	45	A
	ID25-DDT			ESC	RE 2397	106,20	26,00	5,96	STD	45	A

VÁLVULAS - CATÁLOGO DE APLICAÇÕES | VALVES - APPLICATIONS CATALOG

CARRO DE PASSAGEIRO / COMERCIAIS / CAMINHÕES / ÔNIBUS / MÁQUINAS AGRÍCOLAS / MOTOCICLETAS / ESPECIAIS / COMPETIÇÃO
 CARS / COMMERCIALS / TRUCKS / BUSES / AGRICULTURAL MACHINES / MOTORCYCLES / SPECIALS / COMPETITION

MODELOS	MOTORES	CIL.	COMB.	FUNÇÃO	N° RIC	C. TOTAL	Ø CABEÇA	Ø HASTE	HASTE	ÂNGULO	PTA
MODELS	ENGINES	CYL	FUEL	FUNCTION	RIC P/N	TOTAL LENGTH	Ø HEAD	Ø STEM	STEM	ANGLE	TIP

NISSAN

TIIDA/ GRAN LIVINA / LIVINA	1.8L - 16V MR 18DE	4	GASOLINA	ADM	RA1408	106,40	33,90	5,47	STD	45	A
SENTRA	2.0L 16V MR20		FLEX	ESC	RE1409	105,10	27,70	5,45	STD	45	A
MARCH / VERSA	HR-16 DE L4 1.6L - 16V	4	FLEX	ADM	RA 1456	101,95	31,25	4,99	STD	45	A
				ESC	RE 1457	102,65	25,50	4,98	STD	45	A

PEUGEOT

206	1.0L -16V (RENAULT)	4	GASOLINA	ADM	RA 1210	110,65	26,00	5,46	STD	45	C
	DOHC			ESC	RE 1211	112,40	22,00	5,45	STD	45	C
206 / 207	1.4 L - 8V TU3JP	4	FLEX	ADM	RA 1314	112,76	36,73	6,98	STD	45	A
				ESC	RE 1282	112,65	29,20	6,96	STD	45	A
206 / 307	TU5JP4 1.6L- 16V	4	GASOLINA	ADM	RA 1283	103,80	31,30	5,97	STD	45	A
				ESC	RE 1284	104,40	24,50	5,96	STD	45	A
206 / 306 / 405 / PARTNER	1.9 L	4	DIESEL	ADM	RA 2381	112,40	38,50	7,99	STD	45	A
	DW8			ESC	RE 2382	111,85	33,00	7,98	STD	45	A
106 / 205 / 405 - XL / GL	TU1JP 1,1L - 8V / TU3JP - 1.3L - 8V	4	GASOLINA	ADM	RA 1281	112,90	36,70	6,98	STD	30	A
	TU5JP - 1.5L - 8V			ESC	RE 1282	112,65	29,20	6,97	STD	45	A
405 / 406 / 605	XU7JP4 -1.8L - 16V	4	GASOLINA	ADM	RA 1285	106,40	34,60	5,97	STD	45	A
				ESC	RE 1286	105,80	29,60	5,96	STD	45	A
307 / 406 / 407 / 806 / 807	2.0L - 16V (EW10)	4	GASOLINA	ADM	RA 1287	106,20	33,30	5,97	STD	45	A
				ESC	RE 1288	103,70	29,00	5,97	STD	45	A
306 / 406 / PARTNER	XU7JP 1.8L - 8V	4	GASOLINA	ADM	RA 1311	108,55	41,50	7,96	STD	45	A
				ESC	RE 1312	108,40	34,50	7,95	STD	45	A
208	TU4 - 1.5L 8V	4	FLEX	ADM	RA 1410	112,40	37,70	5,98	STD	45	A
206/ 207 COMPACT/ PARTNER	TU4 - 1.4 LT			ESC	RE 1411	112,50	30,20	5,97	STD	45	A
206 / 207 / 307	ET3J4 1.4L - 16V	4	FLEX	ADM	RA 1458	100,80	28,30	5,49	STD	45	C
				ESC	RE 1459	101,20	24,50	5,47	STD	45	C

RENAULT

CLIO/ LOGAN /KANGOO / TWINGO / SANDERO	1.0L -16V DOHC	4	GASOLINA	ADM	RA 1210	110,65	26,00	5,46	STD	45	C
	D4D			ESC	RE 1211	112,40	22,00	5,45	STD	45	C
CLIO / TWINGO (1999...)	D7F - 1.0/1.2L - 8V	4	GASOLINA	ADM	RA 1208	106,90	32,90	5,97	STD	30	A
				ESC	RE 1209	106,80	29,90	5,96	STD	45	A
CLIO II / SCENIC / MEGANE / KANGOO	K4M 1.6L-16V	4	GASOLINA	ADM	RA 1212	109,50	32,70	5,47	STD	45	A
				ESC	RE 1213	107,60	28,00	5,46	STD	45	A
CLIO / R9 / R19 (1985...)	1.6L -8V	4	GASOLINA	ADM	RA 1359	90,70	34,00	6,97	STD	45	B
	C3L			ESC	RE 1360	89,10	28,90	6,96	STD	45	B

suitable for

VÁLVULAS - CATÁLOGO DE APLICAÇÕES | VALVES - APPLICATIONS CATALOG

CARRO DE PASSAGEIRO / COMERCIAIS / CAMINHÕES / ÔNIBUS / MÁQUINAS AGRÍCOLAS / MOTOCICLETAS / ESPECIAIS / COMPETIÇÃO
 CARS / COMMERCIALS / TRUCKS / BUSES / AGRICULTURAL MACHINES / MOTORCYCLES / SPECIALS / COMPETITION

MODELOS	MOTORES	CIL.	COMB.	FUNÇÃO	N° RIC	C. TOTAL	Ø CABEÇA	Ø HASTE	HASTE	ÂNGULO	PTA
MODELS	ENGINES	CYL	FUEL	FUNCTION	RIC P/N	TOTAL LENGTH	Ø HEAD	Ø STEM	STEM	ANGLE	TIP

RENAULT

suitable for

LAGUNA / R19RT / MEGANE (1998 a 2000)	1.8 / 2.0L - 8V	4	GASOLINA	ADM	RA 1369	115,50	40,00	7,98	STD	45	A
	F3P - F3R			ESC	RE 1370	115,40	32,70	7,96	STD	45	A
SCENIC/ LAGUNA / MEGANE	2.0L - 16V	4	GASOLINA	ADM	RA 1267	110,10	33,50	5,47	STD	45	A
	F4R (2004 - 10)			ESC	RE 1268	108,90	29,00	5,44	STD	45	A
TRAFFIC	2.0L - 8V	4	GASOLINA	ADM	RA 1317	112,15	43,90	7,99	STD	30	A
				ESC	RE 1318	111,50	38,60	7,96	STD	45	A
TRAFFIC	2.1L - 8V	4	DIESEL	ADM	RA 2279	111,60	40,35	7,99	STD	45	A
				ESC	RE 2280	111,60	33,25	7,97	STD	45	A
MASTER / TRAFFIC II / LAGUNA / LAGUNA GRAND TOUR	2.2 / 2.5L - 16V	4	DIESEL	ADM	RA 2377	123,20	30,75	5,98	STD	45	C
	2.5L DCI - 16V			ESC	RE 2378	123,10	29,60	5,97	STD	45	C
R19 / CLIO / EXPRESS / MEGANE / KANGOO	1.9 L	4	DIESEL	ADM	RA 2379	110,05	35,10	7,99	STD	45	A
	F8Q			ESC	RE 2380	110,05	31,50	7,97	STD	45	A
CLIO ENERGY / SYMBOL / SANDERO / LOGAN / MEGANE / KANGOO	1.4L - 8V E7J / 1,6L - 8V K7M	4	GASOLINA	ADM	RA 1387	108,10	37,50	6,96	STD	30	A
ALCOOL			ESC	RE 1388	107,80	33,60	6,95	STD	45	A	
DUSTER/ SANDERO NOVO	F4R 2.0L - 16V	4	FLEX	ADM	RA 1444	110,60	34,00	5,48	STD	45	A
				ESC	RE 1445	109,00	29,00	5,97	STD	45	C
MASTER (2013...)	2.3L 16V	4	DIESEL	ADM	RA 2442	104,00	27,70	5,97	STD	45	C
				ESC	RE 2443	103,80	26,00	5,97	STD	45	C
SANDERO / LOGAN	1.0 12V B4D	3	FLEX	ADM	RA 1475	93,45	28,00	4,98	STD	45	C
				ESCO	RE 1476	95,90	23,90	4,97	STD	30	C
SANDERO/LOGAN/DUSTER/CAPTUR	(SCE / H4M) 1.6L - 16V	4	FLEX	ADM	RA 1479	101,85	31,80	4,98	STD	45	A
				ESC	RE 1497	102,50	25,50	4,97	STD	45	A
				ESC	RE 1480	102,60	25,50	4,97	STD	45	C
KWID	1.0L - 12V	3	FLEX	ADM	RA 1500	94,70	27,00	4,98	STD	45	C
				ESC	RE 1501	97,50	22,50	4,97	STD	45	C

TOYOTA

COROLLA (1998 ATÉ 2001) MODELO ANTIGO	1.6 / 1.8L - 16V	4	GASOLINA	ADM	RA 1349	87,60	31,00	5,98	STD	45	A
				ESC	RE 1350	87,90	24,50	5,97	STD	45	A
COROLLA (2003 a 2007)	1.8L - 16V	4	GASOLINA	ADM	RA 1353	88,60	32,00	5,48	STD	45	A
	1ZZFE / 3ZZFE			ESC	RE 1354	88,60	27,50	5,47	STD	45	A
TOYOTA ETIOS	1.3 e 1.5 - 16 V	4	FLEX	ADM	RA 1428	88,45	28,95	5,48	STD	45	A
				ESC	RE 1429	89,26	24,25	5,47	STD	45	A
COROLLA (2007...)	1.8L - 16V	4	GASOLINA	ADM	RA 1440	109,50	32,00	5,48	STD	45	A
			FLEX	ESC	RE 1441	108,30	27,50	5,47	STD	45	A
HILUX (1998...)	2.0 / 3.0L	4	DIESEL	ADM	RA 2315	103,50	42,50	7,97	STD	45	A
	1HZ 2.4L			ESC	RE 2316	103,60	36,00	7,96	STD	45	A
HILUX (2005...)	1KDFTV 3.0L-16V	4	DIESEL	ADM	RA 2355	105,50	32,20	5,98	STD	45	A
				ESC	RE 2356	105,35	27,80	5,97	STD	45	A

VÁLVULAS - CATÁLOGO DE APLICAÇÕES | VALVES - APPLICATIONS CATALOG

CARRO DE PASSAGEIRO / COMERCIAIS / CAMINHÕES / ÔNIBUS / MÁQUINAS AGRÍCOLAS / MOTOCICLETAS / ESPECIAIS / COMPETIÇÃO
 CARS / COMMERCIALS / TRUCKS / BUSES / AGRICULTURAL MACHINES / MOTORCYCLES / SPECIALS / COMPETITION

MODELOS	MOTORES	CIL.	COMB.	FUNÇÃO	N° RIC	C. TOTAL	Ø CABEÇA	Ø HASTE	HASTE	ÂNGULO	PTA
MODELS	ENGINES	CYL	FUEL	FUNCTION	RIC P/N	TOTAL LENGTH	Ø HEAD	Ø STEM	STEM	ANGLE	TIP

VALTRA

SERIE 20	320D/320DS/420DR/420DSR	4/6	DIESEL	ADM	RA 3462	151,85	48,00	8,98	STD	22,50	A
				ESC	RE 3463	152,90	41,00	8,94	STD	45	A

VOLKSWAGEN

KOMBI/ SEDAN/ GOL/ BRASILIA	1300 CC AR	4	GASOLINA	ADM	RA 1008	111,77	33,00	7,95	STD	44	C
			ALCOOL	ESC	RE 1009	111,80	29,90	7,92	STD	45	C
KOMBI/ SEDAN/ GOL/ BRASILIA/ VARIANT/ KARMAN GUIA	1500 / 1600 CC AR	4	GASOLINA	ADM	RA 1010	111,83	35,50	7,94	STD	45	C
			ALCOOL	ESC	RE 1011	111,80	31,90	7,93	STD	45	C
KOMBI / PICK- UP / SEDAN (1984...)	1600 CC AR	4	GASOLINA	ADM	RA 1010	111,83	35,50	7,94	STD	45	C
			ALCOOL	ESC	RE 1121	111,80	29,90	8,91	STD	45	C
KOMBI / FOX / SPACE FOX / CROSS FOX /	1.4 / 1,6L - 8V	4	GASOLINA	ADM	RA 1277	99,25	34,50	5,97	STD	45	C
POLO HATCH / POLO SEDAN / GOLF (2002...)	EA111 / RSH AGUA		ALCOOL	ESC	RE 1278	99,20	28,00	5,95	STD	45	C
KOMBI / FURGÃO / PICK-UP	1600 CC (01 Canaleta)	4	DIESEL	ADM	RA 2060	104,80	33,95	7,96	STD	45	A
				ESC	RE 2061	104,55	31,15	7,94	STD	45	A
KOMBI / FURGÃO / PICK-UP	1600 CC (03 Canaletas)	4	DIESEL	ADM	RA 2034	104,80	33,95	7,96	STD	45	C
				ESC	RE 2035	104,55	31,15	7,94	STD	45	C
GOL/ PASSAT/ VOYAGE/ PARATI/ SAVEIRO/SANTANA/ SANTANA QUANTUM (até Out. de 1990)	AP 600- 1.6L/ AP 800 - 1.8L	4	GASOLINA	ADM	RA 1032	98,65	37,95	7,96	STD	45	C
	AP 2000- 2.0L		ALCOOL	ESC	RE 1033	98,45	33,15	7,94	STD	45	C
	CARBURADO										
GOL	1.0L - 8V (MI)	4	GASOLINA	ADM	RA 1122	94,73	31,00	6,96	STD	45	C
				ESC	RE 1123	94,38	26,00	6,94	STD	45	C
GOL / PARATI	1.0L - 16V (MI)	4	GASOLINA	ADM	RA 1135	98,80	22,50	5,97	STD	45	C
	AE 111			ESC	RE 1136	98,20	20,00	5,95	STD	45	C
GOL POWER	1.0L - 8V (MI)	4	GASOLINA	ADM	RA 1220	98,98	31,00	5,97	STD	45	C
				ESC	RE 1221	98,98	26,00	5,95	STD	45	C
GOL POWER	1.0L - 16V (MI)	4	GASOLINA	ADM	RA 1218	101,75	22,50	5,97	STD	45	C
	RSH			ESC	RE 1219	101,65	20,00	5,95	STD	45	C
GOL / PASSAT / VOYAGE / PARATI / SAVEIRO / SANTANA (ATÉ MARÇO 1984)	1500 / 1600CC ÁGUA	4	GASOLINA	ADM	RA 1014	98,70	33,85	7,96	STD	45	A
	CARBURADO (01 Canaleta)		ALCOOL	ESC	RE 1015	98,44	31,15	7,94	STD	45	A
GOL/ PASSAT/ VOYAGE/ PARATI/ SAVEIRO/ SANTANA (ABRIL 1984 ATÉ ABRIL 1985)	1600 CC ÁGUA	4	GASOLINA	ADM	RA 1030	98,65	33,95	7,96	STD	45	C
	CARBURADO (03 Canaletas)		ALCOOL	ESC	RE 1031	98,45	31,15	7,94	STD	45	C
GOL/ VOYAGE/ PARATI/ SAVEIRO/ APOLLO/ POINTER/ LOGUS / SANTANA / QUANTUM (Nov. de 1990...)	AP 2000 - 2.0L	4	GASOLINA	ADM	RA 1150	98,65	39,95	7,96	STD	45	C
	CARBURADO		ALCOOL	ESC	RE 1033	98,45	33,15	7,94	STD	45	C
GOL/ VOYAGE/ PARATI/ SAVEIRO/ APOLLO/ POINTER/ LOGUS / SANTANA / QUANTUM	AP 600 - 1.6L / AP 800 - 1.8L	4	GASOLINA	ADM	RA 1148	91,35	37,95	7,96	STD	45	C
	C/ INJEÇÃO		ALCOOL	ESC	RE 1149	91,15	33,15	7,94	STD	45	C
GOL/ VOYAGE/ PARATI/ SAVEIRO/ APOLLO/ POINTER/ LOGUS / SANTANA / QUANTUM (1990 A 1993)	AP 2000 - 2.0L	4	GASOLINA	ADM	RA 1151	91,85	39,95	7,96	STD	45	C
	C/ INJEÇÃO		ALCOOL	ESC	RE 1149	91,15	33,15	7,94	STD	45	C

suitable for

VÁLVULAS - CATÁLOGO DE APLICAÇÕES | VALVES - APPLICATIONS CATALOG

CARRO DE PASSAGEIRO / COMERCIAIS / CAMINHÕES / ÔNIBUS / MÁQUINAS AGRÍCOLAS / MOTOCICLETAS / ESPECIAIS / COMPETIÇÃO
 CARS / COMMERCIALS / TRUCKS / BUSES / AGRICULTURAL MACHINES / MOTORCYCLES / SPECIALS / COMPETITION

MODELOS	MOTORES	CIL.	COMB.	FUNÇÃO	N° RIC	C. TOTAL	Ø CABEÇA	Ø HASTE	HASTE	ÂNGULO	PTA
MODELS	ENGINES	CYL	FUEL	FUNCTION	RIC P/N	TOTAL LENGTH	Ø HEAD	Ø STEM	STEM	ANGLE	TIP
VOLKSWAGEN											
GOL/ VOYAGE/ PARATI/ SAVEIRO/ APOLLO/ POINTER/ LOGUS / SANTANA / QUANTUM (1994...)	AP 2000 - 2.0L	4	GASOLINA	ADM	RA 1152	91,85	39,50	7,96	STD	45	C
	C/ INJEÇÃO		ALCOOL	ESC	RE 1149	91,15	33,15	7,94	STD	45	C
NOVO GOL / GOL / FOX	1.0L - 8V (EA111)	4	FLEX	ADM	RA 1295	98,98	31,00	5,97	STD	45	C
				ESC	RE 1296	98,98	26,00	5,95	STD	45	C
NOVO GOL / NOVO GOL SELEÇÃO / NOVO GOL POWER (Julho de 2008...)	1.0L - 8V - AT (GERAÇÃO V)	4	TOTAL FLEX	ADM	RA 1321	98,98	31,00	5,97	STD	45	C
				ESC	RE 1322	98,98	26,00	5,95	STD	45	C
NOVO GOL / NOVO GOL MOTION /	1.6V - 8V (GERAÇÃO V)	4	TOTAL FLEX	ADM	RA 1323	99,25	34,50	5,97	STD	45	C
NOVO GOL POWER MOTION (Julho de 2008...)				ESC	RE 1324	99,20	28,00	5,95	STD	45	C
NOVO GOL / VOYAGE / PARATI / SAVEIRO / FOX / GOLF SPACE FOX / CROSS FOX / POLO HATCH / POLO SEDAN	1.6L - 8V (VHT)	4	TOTAL FLEX	ADM	RA 1307	91,85	37,95	6,98	STD	45	C
				ESC	RE 1308	91,20	32,90	6,96	STD	45	C
GOL / SANTANA / SAVEIRO / PARATI (1996...)	1.6 / 1.8L / 2.0L - 8V AP PERFORMANCE	4	GASOLINA	ADM	RA 1157	91,90	39,50	6,98	STD	45	C
			FLEX	ESC	RE 1156	91,20	32,90	6,96	STD	45	C
GOLF (Até 1995)	1.6 / 1.8 / 2.0L	4	GASOLINA	ADM	RA 1153	91,85	37,95	7,96	STD	45	C
				ESC	RE 1154	91,15	33,15	7,94	STD	45	C
GOLF (1996...)	1.8L	4	GASOLINA	ADM	RA 1155	91,85	37,95	6,98	STD	45	C
				ESC	RE 1156	91,20	32,90	6,96	STD	45	C
GOLF (1996...)	2.0L	4	GASOLINA	ADM	RA 1157	91,90	39,50	6,98	STD	45	C
				ESC	RE 1156	91,20	32,90	6,96	STD	45	C
POLO / BORA / GOLF (1996...)	2.0L - 8V (EA 113)	4	GASOLINA	ADM	RA 1157	91,90	39,50	6,98	STD	45	C
				ESC	RE 1156	91,20	32,90	6,96	STD	45	C
GOLF / PASSAT (Alemão)	1.8L-8V (AGU / AGN) ASPIRADO	4	GASOLINA	ADM	RA 1262	105,10	26,90	5,96	STD	45	C
				ESC	RE 1263	103,90	29,90	5,94	STD	45	C
GOLF IV / PASSAT (Alemão)	1.8L - 20V TURBO	5	GASOLINA	ADM	RA 1262	105,10	26,90	5,96	STD	45	C
				ESC	RE 1264	104,10	29,90	5,95	STD	45	C
AMAROK / JETTA / TIGUAN / PASSAT / GOLF PLUS GOLF VI/ TRANSPORTER	2.0 L - 16V TDI	4	DIESEL	ADM	RA 2392	99,30	28,10	5,97	STD	45	C
				ESC	RE 2393	99,10	26,00	5,96	STD	45	C
VENTO	2.5 L - 16V TDI	4	DIESEL	ADM	RA 2394	88,60	29,50	5,98	STD	45	C
				ESC	RE 2395	88,00	25,50	5,97	STD	45	C
UP!	1.0L 8V	3	FLEX	ADM	RA 1414	110,25	29,50	4,97	STD	45	C
				ESC	RE 1415	110,05	27,00	4,96	STD	30	C
VW AMAROK/GOLF/BORA/JETTA/ PASSAT S3/	1.8 - 2.0 16V / 2.5 20V	4	GASOLINA	ADM	RA 1424	104,00	33,90	5,98	STD	45	C
				ESC	RE 1425	101,80	28,00	5,96	STD	45	C
GOL AT	TURBO 1.0 16V	4	GASOLINA	ADM	RA 1422	98,80	22,50	5,97	STD	45	C
				ESC	RE 1423	98,50	20,00	5,95	STD	45	C
GOLF	TFSI 1.4 L 16V	4	FLEX	ADM	RA 1467	110,25	28,55	4,98	STD	45	C
				ESC	RE 1468	110,05	25,00	4,97	STD	30	C

suitable for

VÁLVULAS - CATÁLOGO DE APLICAÇÕES | VALVES - APPLICATIONS CATALOG

CARRO DE PASSAGEIRO / COMERCIAIS / CAMINHÕES / ÔNIBUS / MÁQUINAS AGRÍCOLAS / MOTOCICLETAS / ESPECIAIS / COMPETIÇÃO
 CARS / COMMERCIALS / TRUCKS / BUSES / AGRICULTURAL MACHINES / MOTORCYCLES / SPECIALS / COMPETITION

MODELOS	MOTORES	CIL.	COMB.	FUNÇÃO	N° RIC	C. TOTAL	Ø CABEÇA	Ø HASTE	HASTE	ÂNGULO	PTA
MODELS	ENGINES	CYL	FUEL	FUNCTION	RIC P/N	TOTAL LENGTH	Ø HEAD	Ø STEM	STEM	ANGLE	TIP
YANMAR											
Microtrator: KF-200	B8 / NT75	1	DIESEL	ADM/ ESC	RAE 4094	106,89	31,00	7,93	STD	30	H
Microtrator: KF-100	B9 / NB10 / NT85	1	DIESEL	ADM/ ESC	RAE 4095	117,90	35,00	8,93	STD	30	H
Microtrator: TC-10	B10 / NB13 / NT95	1	DIESEL	ADM/ ESC	RAE 4096	129,87	40,00	9,91	STD	30	H
Microtrator: TC-11	NS11 / NS11C / NS11T	1	DIESEL	ADM	RA 4097	114,00	38,50	7,96	STD	45	N
				ESC	RE 4098	114,00	32,50	7,96	STD	45	N
Estacionário	NS18	1	DIESEL	ADM	RA 4099	124,95	43,00	8,96	STD	45	A
				ESC	RE 4100	124,95	33,40	8,96	STD	45	A
Estacionário	NS90	1	DIESEL	ADM	RA 4101	113,13	36,50	7,96	STD	45	N
				ESC	RE 4102	113,05	30,50	7,96	STD	45	N

VÁLVULAS ESPECIAIS PARA COMPETIÇÕES | SPECIAL VALVES - FOR COMPETITION

MODELOS	MOTORES	CIL.	COMB.	FUNÇÃO	N° RIC	C. TOTAL	Ø CABEÇA	Ø HASTE	HASTE	ÂNGULO	PTA
MODELS	ENGINES	CYL	FUEL	FUNCTION	RIC P/N	TOTAL LENGTH	Ø HEAD	Ø STEM	STEM	ANGLE	TIP
VOLKSWAGEN											
VOLKSWAGEN	1.8L - 8V (NITRETADA)	4	GASOLINA	ADM	RA 6202	105,02	41,00	7,98	STD	45	03 Canaletas "C"
			ALCOOL	ESC	RE 6203	104,69	36,00	7,94	STD	45	03 Canaletas "C"
VOLKSWAGEN	1.8L - 8V (NITRETADA)	4	GASOLINA	ADM	RA 6204	104,50	41,50	6,95	STD	44	03 Canaletas "C"
			ALCOOL	ESC	RE 6205	104,50	36,50	6,95	STD	44	03 Canaletas "C"
VOLKSWAGEN	1.8L - 8V (NITRETADA)	4	GASOLINA	ADM	RA 6006	104,50	41,50	6,95	STD	44	01 Canaleta "A"
			ALCOOL	ESC	RE 6007	104,50	36,50	6,95	STD	44	01 Canaleta "A"
VOLKSWAGEN	1.600 CC AR (NITRETADA)	4	GASOLINA	ADM	RA 6223	111,70	44,00 / 40,00	7,98	STD	44	03 Canaletas "C"
			ALCOOL	ESC	RE 6224	112,00	37,50 / 35,50	7,94	STD	44	03 Canaletas "C"
GENERAL MOTORS											
GENERAL MOTORS	4.1L (NITRETADA)	6	GASOLINA	ADM	RA 6009	124,70	51,40	8,67	STD	45	01 Canaleta "K"
			ALCOOL	ESC	RE 6010	125,10	42,30	8,67	STD	45	02 Canaletas "J"

suitable for

VÁLVULAS - CATÁLOGO DE APLICAÇÕES / VALVES - APPLICATIONS CATALOG

CARRO DE PASSAGEIRO / COMERCIAIS / CAMINHÕES / ÔNIBUS / MÁQUINAS AGRÍCOLAS / MOTOCICLETAS / ESPECIAIS / COMPETIÇÃO
CARS / COMMERCIALS / TRUCKS / BUSES / AGRICULTURAL MACHINES / MOTORCYCLES / SPECIALS / COMPETITION

VÁLVULAS PARA MOTOCICLETAS

MODELOS	MOTORES	CIL.	COMB.	FUNÇÃO	N° RIC	C. TOTAL	Ø CABEÇA	Ø HASTE	HASTE	ÂNGULO	PTA
MODELS	ENGINES	CYL	FUEL	FUNCTION	RIC P/N	TOTAL LENGTH	Ø HEAD	Ø STEM	STEM	ANGLE	TIP
HONDA											
BIZ / DREAM / POP	100CC	1	GASOLINA	ADM	RA 5192	65,90	23,00	4,98	STD	45	0
				ESC	RE 5193	65,45	20,00	4,95	STD	45	0
BIZ / DREAM	125CC (INJEÇÃO)	1	GASOLINA	ADM	RA 5238	71,95	24,00	4,98	STD	45	0
				ESC	RE 5239	71,70	21,00	4,96	STD	45	0
CG / ML (Até 1982) - CG TODAY CARGO (Até 1991)	125CC	1	GASOLINA	ADM	RA 5170	93,30	29,00	5,45	STD	45	0
				ESC	RE 5171	92,60	24,00	5,43	STD	45	0
TURUNA / ML (ATÉ 1982) / XL DUTY (ATÉ 1993)	125CC	1	GASOLINA	ADM	RA 5172	92,30	30,00	5,45	STD	45	0
				ESC	RE 5173	91,40	25,00	5,43	STD	45	0
CG TODAY / CARGO / TITAN / XLR (APÓS 1991)	125CC	1	GASOLINA	ADM	RA 5174	93,00	30,00	5,45	STD	45	0
				ESC	RE 5175	92,30	25,00	5,43	STD	45	0
CG / TITAN / KS (2003...)	125CC	1	GASOLINA	ADM	RA 5186	93,48	29,00	4,98	STD	45	0
				ESC	RE 5187	92,32	25,00	4,96	STD	45	0
FAN / CG / ES / KS / CARGO (2009...)	125CC CARBURADO / INJEÇÃO	1	GASOLINA	ADM	RA 5400	83,60	27,00	4,98	STD	45	0
				ESC	RE 5401	82,60	23,00	4,97	STD	45	0
TITAN ATÉ 2004 CG 150 ATÉ 2008	150CC	1	GASOLINA	ADM	RA 5216	83,40	30,00	4,98	STD	45	0
				ESC	RE 5217	82,50	26,00	4,96	STD	45	0
CBX / NX 150 / 200CC	150 / 200CC	1	GASOLINA	ADM	RA 5190	89,14	31,50	5,45	STD	45	A
				ESC	RE 5191	89,00	27,00	5,43	STD	45	A
XLX 250	250CC	1	GASOLINA	ADM	RA 5180	105,11	29,00	5,48	STD	45	A
				ESC	RE 5181	103,78	26,00	5,47	STD	45	A
TWISTER / TORNADO	250CC	1	GASOLINA	ADM	RA 5196	83,54	28,00	4,98	STD	45	0
				ESC	RE 5197	83,20	23,45	4,96	STD	45	0
XLX / NX	350CC	1	GASOLINA	ADM	RA 5176	103,44	32,00	5,48	STD	45	A
				ESC	RE 5177	101,94	29,00	5,47	STD	45	A
CB 400	400CC	2	GASOLINA	ADM	RA 5182	95,30	26,00	5,45	STD	45	A
				ESC	RE 5183	100,55	32,00	6,56	STD	45	A
CB 750	750CC	4	GASOLINA	ADM	RA 5184	86,85	25,00	4,98	STD	45	0
FALCON NXR	400CC	1	GASOLINA	ADM	RA 5434	102,60	33,00	5,48	STD	45	0
				ESC	RE 5435	101,05	29,00	5,46	STD	45	0
NXR/BROS/CG/TITAN/START	160CC	1	GASOLINA	ADM	RA 5436	87,25	30,00	4,99	STD	45	0
				ESC	RE 5437	86,60	26,00	4,97	STD	45	0
CB 300 (2016...)	300CC	1	GASOLINA	ADM	RA 5469	83,65	27,00	4,98	STD	45	0
				ESC	RA 5197	83,20	23,45	4,96	STD	45	0
TWISTER (2016...)	250CC	1	FLEX	ADM	RA 5491	82,90	25,00	4,98	STD	45	0
				ESC	RE 5492	83,45	21,60	4,97	STD	45	0
POP (2016...)	110CC	1	GASOLINA	ADM	RA 5493	76,70	25,50	4,98	STD	45	0
				ESC	RE 5494	76,05	21,00	4,97	STD	45	0

suitable for

VÁLVULAS - CATÁLOGO DE APLICAÇÕES | VALVES - APPLICATIONS CATALOG

CARRO DE PASSAGEIRO / COMERCIAIS / CAMINHÕES / ÔNIBUS / MÁQUINAS AGRÍCOLAS / MOTOCICLETAS / ESPECIAIS / COMPETIÇÃO
 CARS / COMMERCIALS / TRUCKS / BUSES / AGRICULTURAL MACHINES / MOTORCYCLES / SPECIALS / COMPETITION

VÁLVULAS PARA MOTOCICLETAS

MODELOS	MOTORES	CIL.	COMB.	FUNÇÃO	N° RIC	C. TOTAL	Ø CABEÇA	Ø HASTE	HASTE	ÂNGULO	PTA
MODELS	ENGINES	CYL.	FUEL	FUNCTION	RIC P/N	TOTAL LENGTH	Ø HEAD	Ø STEM	STEM	ANGLE	TIP
YAMAHA											
YBR 125	125CC	1	GASOLINA	ADM	RA 5194	64,35	25,98	4,98	STD	45	0
				ESC	RE 5195	63,60	22,00	4,97	STD	45	0
TDM XT 225	225CC	1	GASOLINA	ADM	RA 5188	93,68	34,00	5,98	STD	45	0
FAZER	250CC			ESC	RE 5189	92,40	28,50	5,96	STD	45	0
SUZUKI											
YES	125CC	1	GASOLINA	ADM	RA 5291	94,55	25,50	4,98	STD	45	0
				ESC	RE 5292	93,85	22,55	4,96	STD	45	0
YES	150CC	1	GASOLINA	ADM	RA 5471	92,30	25,60	4,98	STD	45	0
				ESC	RE 5472	91,95	22,60	4,97	STD	45	0
SUNDOWN											
NEW WEB	100CC	1	GASOLINA	ADM	RA 5232	65,90	23,00	4,98	STD	45	0
				ESC	RE 5233	65,45	20,00	4,95	STD	45	0
HUNTER MAX	125CC	1	GASOLINA	ADM	RA 5230	93,30	29,00	5,45	STD	45	0
				ESC	RE 5231	92,60	24,00	5,43	STD	45	0

EQUIVALÊNCIAS RIC - VÁLVULAS DE ADMISSÃO | RIC EQUIVALENCES - INTAKE VALVES

MARCA	Nº RIC	Nº ORIGINAL	Nº EATON	Nº BBB	Nº MAHLE
WILLYS	RA 1001	800558	VS 16	3272-A	VA0230119
VW	RA 1008	113.109.601D / 040.109.601.1	VS 868	452-A	VA0700050
VW	RA 1010	311.109.601 / 040.109.601.2	VS 869	453-A	VA0700020
VW	RA 1014	056.109.601-A	VS 981	422-A	VA0700061
FIAT	RA 1016	4340118	VS992	380-AC	VA0250002
GM	RA 1026	2638552/ 3774052/ 94616648	VS1202	137-A	VA0140104
GM	RA 1028	94621104/ 1038	VS 1299	332-AC	VE0140084
VW	RA 1030	049.109.601F	VS 1356	825-A	VA07000078
VW	RA 1032	035.109.601-C	VS 1646	815-A	VA0700017
GM	RA 1036	90136614/ 6613	VS 1415	344-AC	VA0140014
FORD	RA 1038	84AU-6507-A	VS 2489	3036-A	VA0590043
FIAT	RA 1040	4239917/ 4460697	VS 2556	383-AC	VA0250060
GM	RA 1042	52285384/ 902201125	VS2473/ VS1981	3110-AC	VA0140041
GM	RA 1048	2787538/ 3786360/ 94616890	VS 865 / VS 1355	137-A +3	VA0140108
GM	RA 1050	3786361/ 3995685	VS 866 / VS 1493	137-A +15	VA0140110
GM	RA 1052	3786362	VS 867 / VS 1494	137-A +30	
GM	RA 1066	94621039/ 1040	VS 1336	332-AC +3	VA0140084 0,076
GM	RA 1068	94621041	VS 1337	332-AC +6	VA0140084 0,152
GM	RA 1070	90106792	VS 1407	3108-AC	
FIAT	RA 1074	7617500	VS 2692	856-AC	VA0250054
FIAT	RA 1084	7633751/ 46470637/ 46559031	VS 4897	3234-AC	VA0250018
FORD	RA 1085	84AU-6507-B	VS 1492		VA0590044
GM	RA 1086	3695455/ 3758810	VS 40	135-A	VA0140106
GM	RA 1104	90220119	VS 1980	3109-AC	VA0140040
FIAT	RA 1105	7722907	VS 4530	3320-AC	VA0250052
FORD	RA 1108	89BM-6507-AA	VS 4763	3052-AC	VA0590181
FORD	RA 1109	89BM-6507-BA	VS 4765	3054-AC	VA0590172
GM	RA 1111	90323519/ 642763	VS 4261	3136-AC	VA0140015
GM	RA 1113	90215492	VS 4899	3146-AC	VA0140086
VW	RA 1122	030.109.601AC	VS 4934	3512-A	VA0700028
GM	RA 1124	90412712	VS 4901	3138-AC	VA0140076
FIAT	RA 1126	46413806	VS 5155	3514-AC	VA0250165
VW	RA 1135	036.109.601R	VS 5223	3508-A	VA0700009
GM	RA 1137	93248325	VS 5794	3578-AC	VA0140026
FIAT	RA 1140	7633751/ 46470637/ 46559031	VS 4897	3234-AC	VA0250018
FIAT	RA 1142	465530460	VS 5085	3800-AC	VA0250162
FIAT	RA 1144	46553048	VS 5087	3558-AC	VA0250166
FIAT	RA 1146	7735898/ 60812982	VS 5823	3600-AC	VA0250160
VW	RA 1148	035.109.601G	VS 4762	3312-A	VA0590066

EQUIVALÊNCIAS RIC - VÁLVULAS DE ADMISSÃO | RIC EQUIVALENCES - INTAKE VALVES

MARCA	Nº RIC	Nº ORIGINAL	Nº EATON	Nº BBB	Nº MAHLE
VW	RA 1150	026.109.601.D	VS 2639	3602-A	VA0590067
VW	RA 1151	026.109.601CF	VS 2619	3310-A	VA0700219
VW	RA 1152	048.109.601A	VS 4349	3313-A	
VW	RA 1153	035.109.601J/K	VS 2690	3238-A	
VW	RA 1155	048.109.601- E	VS 4510	3484-A	VA0700088
VW	RA 1157	078.109.601B	VS 4546	3486-A	VA0700089
GM	RA 1158	90412277/ 641022	VS 5095	3140-AC	VA0140072
FORD	RA 1164	928M-6507-F2A	VS 5294	3066-AC	VA0590180
FORD	RA 1166	97MM-6507-B2B	VS 5833	3064-AC	VA0590179
FORD	RA 1168 (antiga 1297)	XS6E-6507-AA/ 7S6G-6507-AA	VS 4984/ VS 5436	3062-AC	VA0590170/ VA0591474
FIAT	RA 1198	7547400	VS 2873	1826-AC	VA0250159
RENAULT	RA 1208	7701469266/ 7700862479	VS 5815	3620-A	VA 0180421
RENAULT	RA 1210	7701472986	VS 5802	3862-A	VA 0181606/ VA0180427
RENAULT	RA 1212	7701471378/ 8200059409	VS 5895	3598-A	VA0180124
VW	RA 1218	036.109.601AE		3870-A	VA0700074
VW	RA 1220	030.109.601 AP	VS 5453	3868-A	VA 0701421
FIAT	RA 1252	60811153/ 7766564	VS 5808	3736-AC	VA0250168
GM	RA 1258	90215492	VS 4899	3146-AC	VA 0140086
FIAT	RA 1260	90215492	VS 4899	3146-AC	VA 0140086
AUDI/VW	RA 1262	058.109.601 C	VS 5807	3488-AS	VA0700242
RENAULT	RA 1267	7701474287/ 7701471279	VS 5796	3864-A	VA 0180415
FIAT	RA 1271	55195497	VS 5263	3956-AC	VA 0250271
GM	RA 1273	93333561	VS 5907	4054-AC	VA 0140226
FORD	RA 1275	YS4E-6507-AB/ X566-6507-BA	VS 5349/ VS 4985	3092-AC	VA0590174
VW	RA 1277	032.109.601M	VS 5305	3886-A	VA0700252
PEUGEOT	RA 1281	0948.58	VS 5852	3242-A	VA0440555
PEUGEOT	RA 1283	0948.A9	VS 5803	3616-A	VA0440578
CITROEN/PEUGEOT	RA 1285	0948.92		3540-A	VA 0440561
CITROEN/PEUGEOT	RA 1287	0948.99	VS 5810	3884-A	VA0440579
GM	RA 1289				
FIAT	RA 1293	465530460	VS 5085	3800-AC	VA 02500162
VW	RA 1295	030.109.601AP	VS 5453	3868-A	VA 0701421
ASIA	RA 1299	13711-87701		455-A	VA 0720156
GM	RA 1301	93361392	VS 5846	4004-AC	VA 0141431
GM	RA 1303	93399246	VS 5834	3912- AC	
GM	RA 1305	93399245		4006-EC	VA 0141396
VW	RA 1307	048.109.601- E	VS 4510	3484-A	VA0700088
CITROEN/PEUGEOT	RA 1311	0948.56		3301-A	VA 0440551
FIAT	RA 1313	55195784	VS 555	4156-AC	VA 0250271
CITROEN/PEUGEOT	RA 1314	0948.91		3798-AS	VA 0441091
RENAULT	RA 1317	7700635409		421-A	

EQUIVALÊNCIAS RIC - VÁLVULAS DE ADMISSÃO | RIC EQUIVALENCES - INTAKE VALVES

MARCA	Nº RIC	Nº ORIGINAL	Nº EATON	Nº BBB	Nº MAHLE
FORD	RA 1319	F5RZ-6505-A		3066-AC	
VW	RA 1321	030.109.601 AP	VS 5453	3868-A	VA 0701421
VW	RA 1323	032.109.601M	VS 5305	3886-A	VA0700252
FORD	RA 1339	1S7Z-6505-AA		3094-AC	VA0590255
HONDA	RA 1347	14711P08000		3854-AN	VA0510209
TOYOTA	RA 1349	13711-15090			VA0630205
TOYOTA	RA 1353	13711-22040		3974-AN	VA0630738
RENAULT	RA 1359	7702220679	VS 5875	3308-AC	
RENAULT	RA 1369	7701466607		3714-A	
GM	RA 1371	NT			
ASIA MOTORS	RA 1385				
RENAULT	RA 1387	7700853390		4184-A N	VA0180393
HONDA	RA 1389	14711-PWA-000		4164-NA	VA0510263
FIAT	RA 1391	7609772		855AC	
FIAT	RA 1398	55224590	VS 5687	4154- AC	VA 0251610
HONDA	RA 1402	14711-PWC-000		4166-NA	VA0510265
FIAT	RA 1404	55185028	VS 5087	3998-AC	
HYUNDAI	RA 1406	22211-23600		4536-A N	VA 2081417
NISSAN	RA 1408	13201-EN20B		4134A	
PEUGEOT/CITROEN	RA 1410	9675424780		4210- AX	
FORD	RA 1412	30711639		4344-A N	VA 0591471
VW	RA 1414	04C-109-601B		4520-A N	
FIAT	RA 1416	55219002			
MITSUBISHI	RA 1418	MD 162422		3462-A N	VA 1951571
MERCEDES BENZ	RA 1420				
VW	RA 1422	036.109.601R	VS-5127	3508- A	VA 0700009
VW	RA 1424	06D.109.601.M		4408-AX	VA 0701459
HYUNDAI	RA 1426	22211 04000		4490-A N	
TOYOTA	RA 1428	13711 47020			
GM	RA 1432	55569449		4454-A N	VA 0141579
MAZDA	RA 1438	F801-12-111		829ABN30	
TOYOTA	RA 1440	13711-37020		4182-A N	
RENAULT	RA 1444	132010427R			
HYUNDAI/ KIA	RA 1446	22211-2B400			VA 2081552
HONDA	RA 1448	14711-RNA-A000	VS 4903	3854-AN	VA0510257
FIAT	RA 1452				
NISSAN	RA 1456	13201-ED000		4518-AN	
CITROEN/PEUGEOT	RA 1458	9465002080		4374-A	
AUDI/VW	RA 1467	04E-109-601-B		4526-A	
FIAT	RA 1473	55267853		4790 AN	
RENAULT	RA 1475	8201705201			
FORD	RA 1477	CM526507A	0055267853	4642 AN	

EQUIVALÊNCIAS RIC - VÁLVULAS DE ADMISSÃO | RIC EQUIVALENCES - INTAKE VALVES

MARCA	Nº RIC	Nº ORIGINAL	Nº EATON	Nº BBB	Nº MAHLE
RENAULT	RA 1479			4794 AN	
GENERAL MOTORS	RA 1483	14025572		487-AC	
MAXION/PERKINS	RA 2004	910069 / 70910005	VS 754	250-A	VA0570033
MAXION/PERKINS	RA 2006	91001 / 70910003	VS 620	247-A	VA0570035
MAXION/PERKINS	RA 2012	70910004 / 70910001	VS 887	247-ACB	VA0570032
MWM	RA 2018	922604600054	VS 1134	565-AC	VA0130011
MAXION/PERKINS	RA 2022	70910009 / 70910007	VS 1160	249-AC	VA0570024
MERCEDES BENZ	RA 2024	3520530101	VS 1177	226-AC	VA0570038
VW	RA 2034	068.109,601C	VS 1358	303-AC	VA0700082
MERCEDES BENZ	RA 2044	3210530801	VS 800	224-AC	
MWM	RA 2046	922.204.600.024	VS 757	3330-A	
FORD	RA 2058	D6NN-6507-A	VS 1118	329-A	
VW	RA 2060	68109601	VS 1126	303-AC	
MAXION/PERKINS	RA 2072	70910014	VS 1423	1498-ACP	VA0570111
MWM	RA 2076	922.904.608.094	VS 2696	3390-AC	VA0130099
MAXION/PERKINS	RA 2078	70910017	VS 2815	3392-AC	VA0570038
MERCEDES BENZ	RA 2080	3660500326	VS 1814	3260-ACB	VA0480006
MERCEDES BENZ	RA 2082	3660500226	VS 2587	2026-AC	VA0480096
ASIA	RA 2115	K638-12111		3296-A	VA0720154
KIA	RA 2117	0VNO-112111	VS 5281	3548-APN	VA02110185
KIA	RA 2119	0K-71012111	VS 5284	3298-AN.	
MAXION/PERKINS	RA 2128	70910029	VS 2831	3342-AC	VA0570123
MAXION/PERKINS	RA 2129	70910037	VS 4266	3388-ACB	
MERCEDES BENZ	RA 2131	3660501226	VS 2770	3260-ACB	VA4800070
MWM	RA 2133	961004600034	VS 2825 / VS 4877	3422-AC	VA0130101
MWM	RA 2160	940704600034 / 940704608024	VS 4895	3546-AC	VA0130277
MAXION/PERKINS	RA 2162	500126	VS 5426	3344-ACB	VA0570250
FIAT	RA 2214	504069200		3510-ACB	VA0010211
FORD	RA 2226	87802257			
FIAT	RA 2234	98468338	VS 5835	3586-ACB	VA 0250513
KIA	RA 2250	0K-6512111	VS 5296	38728-AN.	VA02110187
MITSUBISHI	RA 2269	MD-083657		3594-AN.	VA01950223
RENAULT	RA 2279	REN-109601M			
HYUNDAI	RA 2309	2221142200		4170-A N	VA 02081301
TOYOTA	RA 2315	1371117010			
TOYOTA	RA 2355	13711-30030		4016-AN	
MITSUBISHI	RA 2367	22211-42520		3896-AN	VA1950254
MITSUBISHI	RA 2373	2221142520	VS 5816	3896-A N	VA 1950223
MERCEDES BENZ	RA 2375	6110530101		3658-AN	
RENAULT	RA 2377	4506083 / 7701472669		4080-AN	
RENAULT	RA 2379	7701466607		3420-AB	VA0180307

EQUIVALÊNCIAS RIC - VÁLVULAS DE ADMISSÃO | RIC EQUIVALENCES - INTAKE VALVES

MARCA	Nº RIC	Nº ORIGINAL	Nº EATON	Nº BBB	Nº MAHLE
PEUGEOT	RA 2381	22211- 42520		3304-A	VA0440568
FIAT IVECO	RA 2383	504238924			
VOLKS/AUDI	RA 2392	03L.109.601		4104A	
VOLKS/AUDI	RA 2394	03G.109.601B			
NISSAN	RA 2396	13201-AD201		4136-A	
HYUNDAI/ KIA	RA 2430	22211 4A060		4120-A N	
RENAULT	RA 2442				
FORD	RA 2454			4340-AN	
CUMMINS	RA 2460	3940735/5011879		3976-AC	
FORD	RA 2465			4292-AC	
GENERAL MOTORS	RA 2481	55599817		4470-AC	
MITSUBISHI	RA 2485			4310 NA	
MERCEDES BENZ	RA 2489	6.510.530.101		4530 AC	
MERCEDES BENZ	RA 3020	3450537101 / 3460530001	VS 1157	843-AC	VA0480048
MERCEDES BENZ	RA 3054	3260530701	VS 960	223-A	
CATERPILLAR	RA 3056	5S6452	VS 969	573-A	VA0110143
MERCEDES BENZ	RA 3062	3450500026	VS 1129	3262-AC	VA0480080
MERCEDES BENZ	RA 3064	3.550.530.001	VS 1136	843-AC	VA0480091
MERCEDES BENZ	RA 3236	4220500226	VS 2520	1839-ACB	VA0480056
CUMMINS	RA 3242	3920867	VS 4307	3466-AC	VA0210151
CUMMINS	RA 3244	3924492	VS 4309	3334-AC	VA0210153
FORD	RA 3254	E2TN-6507-AA	VS 1498	3044-AC	
FORD	RA 3256	E5HN-6507-AA	VS 2364	23029-ACB	
VALTRA	RA 3462	836646356		3918-AC	VA 0310273
MERCEDES BENZ	RA 3487	457.053.00.01			
AGRALE	RA 4088	7.004.006.005.008	VS 936		VA 0060902
AGRALE	RA 4090	7.006.006.006.003	VS 1333	3326-A	VA 0060903
AGRALE	RA 4092	7.007.006.005.001	VS 1301	3924-A	VA 0060904
YANMAR	RA 4097	NS11-11-100		3366-A	
YANMAR	RA 4099	NS18-11-100		3370-AC	
YANMAR	RA 4101	NS90-11-100		3363-A	
HONDA	RA 5170	147721383000BR	VS 4917	23293-AP	
HONDA	RA 5172	147114400030BR	VS 4919	3408-AC	
HONDA	RA 5174	14711KY08901R	VS 4994	3416-AC	
HONDA	RA 5176	14711KL3670		3418-AC	
HONDA	RA 5180	14711KG0000		3410-AN.	
HONDA	RA 5182	14711413000		1647-AB	
HONDA	RA 5184	14711MJ0000			
HONDA	RA 5186	14711KGAB000R			
YAMAHA	RA 5188	5H01211102			
HONDA	RA 5190	14711KWI9000R		1001-AC	
HONDA	RA 5192	14711GN59130		1010-A	

EQUIVALÊNCIAS RIC - VÁLVULAS DE ADMISSÃO | RIC EQUIVALENCES - INTAKE VALVES

MARCA	Nº RIC	Nº ORIGINAL	Nº EATON	Nº BBB	Nº MAHLE
YAMAHA	RA 5194	5HH1211100		3950-AN.	
HONDA	RA 5196	14711KPF9000RWI		3952-AN.	
HONDA	RA 5216	14711KRM8400		3904-AC	
SUNDOWN	RA 5230	031CV0010			
SUNDOWN	RA 5232	071ACV0005			
HONDA	RA 5238	14711-KSS900			
SUZUKI	RA 5291	1291112F50			
HONDA	RA 5400	14711-KWG-600			
HONDA	RA 5434	14711-KCY-670			
HONDA	RA 5436	14711-KRE-600			
HONDA	RA 5469				
SUZUKI	RA 5471	12911-25H01-000			
HONDA	RA 5491				
HONDA	RA 5493				
VW COMPETIÇÃO	RA 6202				
VW COMPETIÇÃO	RA 6204	12911-25H01-000			
VW COMPETIÇÃO	RA 6006				
VW COMPETIÇÃO	RA 6223				
VW COMPETIÇÃO	RA 6009				

EQUIVALÊNCIAS RIC - VÁLVULAS DE ESCAPE | RIC EQUIVALENCES - EXHAUST VALVES

MARCA	Nº RIC	Nº ORIGINAL	Nº EATON	Nº BBB	Nº MAHLE
WILLYS	RE 1002	B12421	VS 26	3272-E	NT
WILLYS	RE 1003	B27220	VS 770	3273-E	VE0230118
VW	RE 1009	113.109.612 / 040.109.612.2	VS 850	1452-E	VE0700049
VW	RE 1011	311.109.612 / 040.109.612.3	VS 1167	1453-E	VE0700022
VW	RE 1015	056.109.611A	VS 980	1422-EB	VE0700062
FIAT	RE 1017	4340119/ 59852970	VS 993	1380-EC	VE0250001
GM	RE 1027	3724778/ 3989084/ 94623462	VS1334/ VS 1201	1138-E	VE0140105
GM	RE 1029	94621105/ 1043	VS 1302	1332-ECP	VE0140083
VW	RE 1031	049.109.611F	VS 1357	1825-E	VE 0700077
VW	RE 1033	035.109.611F	VS 1696	1815-EB	VE0700016
GM	RE 1037	90136620/ 6621	VS 1658	1344-ECP	VE0140113
FORD	RE 1039	84AU-6505-A	VS 2465	3037-EP	VE0590042
FIAT	RE 1041	5973129	VS 2557	1383-EC	VE0250059
GM	RE 1043	90323756	VS 1984	23109-ECP	VE0140039
GM	RE 1049	3732758 / 94623463	VS 1335 / VS 1495	1138-C+3	VE0140107
GM	RE 1051	7323108/ 3995603/ 94625721	VS 1481 / VS 1496	1138-EC+15	VE0140109
GM	RE 1053	94625722	VS 1482 / VS 1497	1138-EC+30	NT
GM	RE 1067	94621045	VS 1339	1332-ECP+3	VE0140083 0,076
GM	RE 1069	94621047	VS 1338	1332-ECP+6	VE0140083 0,152
GM	RE 1071	90106797	VS 1411	23108-ECPS	NT
FIAT	RE 1075	5973128	VS 2691	1175-EC	VE0250053
WILLYS	RE 1103	37234	NT	NT	NT
FIAT	RE 1106	7574742	VS 4531	3321-ECB	VE0250051
FORD	RE 1107	78MU-6505-A	VS 1204	1326-E	VE0590092
FORD	RE 1110	97BM-6505-AA	VS4764	3053-ECB	VE0590173
GM	RE 1112	90323524/ 642890	VS 4262	3137-ECB	VE0140014
GM	RE 1114	90324412	VS 4900	3147-ECB	VE0140085
VW	RE 1121	43109611	VS 1317	1305-ECP	VE0700021
VW	RE 1123	030.109.611N	VS 4856	3513-EB	VE0700027
GM	RE 1125	90412974	VS 4902	3139-EC	VE0140075
FIAT	RE 1127	46413870	VS 5291	3515-EC	VE0250164
VW	RE 1136	036.109.611J	VS 5224	3509-EB	VA0700008
GM	RE 1138	93248326	VS 5793	3579-ECB	VE0140025
FIAT	RE 1139	7633752/ 46470638	VS 5080	23234-EC	NT
FIAT	RE 1141	7633752 / 46470368	VS4898	NT	VE0250019
FIAT	RE 1143	465530470	VS 5086	3801-EC	VE0250167
FIAT	RE 1145	46553049	VS 5088	3559-ECBS	VE0250163
FIAT	RE 1147	7735899/ 60812981	VS 5825	3601-ECBS	VE0250161
VW	RE 1149	048.109.611A	VS 2844	23238-EB	NT
VW	RE 1154	048.109611A	VS 2844	23238-EB	NT
VW	RE 1156	048.109.611B	VS 4511	3485-EBS	VE0700087

EQUIVALÊNCIAS RIC - VÁLVULAS DE ESCAPE | RIC EQUIVALENCES - EXHAUST VALVES

MARCA	Nº RIC	Nº ORIGINAL	Nº EATON	Nº BBB	Nº MAHLE
GM	RE 1159	90410813/ 641325	VS 5094	23141-EC	VE0140071
FORD	RE 1165	948M-6505-D2A	VS 5295	3067-ECB	VE0590182
FORD	RE 1167	XS6G-6505-B2A	VS 5834	3065-EM	NT
FORD	RE 1169 (antiga 1298)	XS6E6505-AB/ 7S6G-6505-AA	VS 5126/ VS 5437	3063-ECB	VE0590171
FIAT	RE 1199	7597080	VS 2874	1826-ECB	VE0250158
RENAULT	RE 1209	7701469269/ 7700862480	VS 5804	3621-EB	VE 0180422
RENAULT	RE 1211	7701473004	VS 5799	3863-EB	VE 0181607/ VE 0180438
RENAULT	RE 1213	7701473354/ 8200059409	VS 5894	3599-EB	VE0180125
VW	RE 1219	036.109.611 T		3871-EB	VE0700073
VW	RE 1221	030.109.611 AE	VS 5306	3869-EB	VE 0701422
FIAT	RE 1253	60811154/ 7766565	VS 5805	3737-ECB	VE0250169
GM	RE 1259	90324412	VS 4900	3147-ECB	VE 0140085
FIAT	RE 1261	90324412/ 7083242	VS 4900	3147-ECB	VE 0140085/ VE 0140370
AUDI/VW	RE 1263	058.109.611 M		3583- EC	VE0700243
AUDI/VW	RE 1264	058.109.611 E		3489- EC	VE0700243
RENAULT	RE 1268	7701474286/ 7701471280	VS 5798	3865-EB	VE 0180416
FIAT	RE 1272	55195498	VS 5264	3997-ECB	VE 0250272
GM	RE 1274	93333562	VS 5906	4055- ECB	VE 0140248
FORD	RE 1276	YS4E-6505-BA/ XS6E6505BB	VS 5127	3093-ECBS	VE0590175
VW	RE 1278	032.109.611L	VS 5115	3887-EB	VE0700253
PEUGEOT	RE 1282	0949.59		23242-E	VE 0440588
PEUGEOT	RE 1284	0949.A8	VS 5797	3617-ECBS	VE0440598
PEUGEOT	RE 1286	0949.92		3577-ECB	
PEUGEOT	RE 1288	0949.99	VS 5809	3885-ECB	VE 0441603
GM	RE 1290	93308640			
FIAT	RE 1294	465530470	VS 5086	3801-EC	VE0250167
VW	RE 1296	030.109.611AE	VS 5306	3869-EB	VE 0701422
ASIA	RE 1300	1371587701		1455-ECP	
GM	RE 1302	93385791			
GM	RE 1304	93399248		3913-ECB	
GM	RE 1306	93399247		4007-ECB	
VW	RE 1308	048.109.611B	VS 4511	3485-EBS	VE0700087
PEUGEOT	RE 1312	0948.57		23301-ECB	
RENAULT	RE 1318	7700644709			
FORD	RE 1320	948M-6505-F2A			
VW	RE 1322	030.109.611 AE	VS 5306	3869-EB	VE 0701422
VW	RE 1324	032.109.611L	VS 5115	3887-EB	VE0700253
FORD	RE 1340	1S7Z-6505-AA	NT	3095-EC	VE0590256
HONDA	RE 1348	14721P08000	NT	3855-EBN	VE0510210
TOYOTA	RE 1350	13715-16060	NT	NT	VE0630206
TOYOTA	RE 1354	13715-22030	NT	3975-EN	VE0630208
RENAULT	RE 1360	7700638247	NT	1363-ECP	

EQUIVALÊNCIAS RIC - VÁLVULAS DE ESCAPE | RIC EQUIVALENCES - EXHAUST VALVES

MARCA	Nº RIC	Nº ORIGINAL	Nº EATON	Nº BBB	Nº MAHLE
RENAULT	RE 1370	7701468690	NT	3715-EB	NT
GM	RE 1372	NT	NT	NT	NT
ASIA	RE 1386				
RENAULT	RE 1388	7700865934		4185-E N	VE0180310
HONDA	RE 1390	14721-PWA-000		4165-EM	VE0510264
FIAT	RE 1399	55231699	VS 5561	4155- EM	VE 0251611
HONDA	RE 1403	14721-PWC-000		4167-EM	VE0510266
FIAT	RE 1405	55185080		3999-ECB	
HYUNDAI	RE 1407	22212-23600		4537-E N	VE 02081418
NISSAN	RE 1409	13202-EN20B			
PEUGEOT/CITROEN	RE 1411	9675424980		4211- EX	
FORD	RE 1413	30711638		4345-E N	VE 0591472
VW	RE 1415	04C-109.611		4521-EBN	
FIAT	RE 1417	55218807			
MITSUBISHI	RE 1419	MD 162423		3463-EBN	VE 1951572
MERCEDES BENZ	RE 1421				
VW	RE 1423	036.109.611J	VS-5223	3509- EB	VE0700008
VW	RE 1425	06D.109.611.K		4221- ECB	VE 0701460
HYUNDAI	RE 1427	22212 04070		4491-E N	
TOYOTA	RE 1429	13715 47030			
GM	RE 1433	55569450		4455-E N	VE 0141580
MAZDA	RE 1439	F801-12-121		1829EPN30	
TOYOTA	RE 1441	13715-37030		4183-E N	
RENAULT	RE 1445	132028317R			
HYUNDAI/ KIA	RE 1447	2212-2B000			VE 2081553
FIAT	RE 1453				
NISSAN	RE 1457	13202-ED000		4519	
CITROEN/PEUGEOT	RE 1459	9465002980		4375-EC	
FIAT	RE 1464	55203211		3957-ECB	
AUDI/VW	RE 1468	04E-109-611-J		4527-ECB	
FIAT	RE 1474	55275599		4791 EN	
RENAULT	RE 1476	8201705203			
FORD	RE 1478	E38G6505BB		4643 EN	
RENAULT	RE 1480			4795 EN	
GENERAL MOTORS	RE 1484	3849818		1330-ECP	
MAXION/PERKINS	RE 2005	910073 / 70910006	VS 457	1251-EPMF	VE0570034
MAXION/PERKINS	RE 2007	91002	VS 618	248-E	VE0570036
MAXION/PERKINS	RE 2013	70910002	VS 886	248-ECB	VE0570031
MWM	RE 2019	930804600024	VS 1135	1565-ECB	VE0130010
MAXION/PERKINS	RE 2023	70910010 / 70910008	VS 1161	1249-ECP	VE05700223
MERCEDES BENZ	RE 2025	3520531505	VS 1178	1226-ECB	VE0480003
VW	RE 2035	069.109.611C	VS 1359	1303-ECB	VE0700081
MERCEDES BENZ	RE 2045	3210530705	VS 509	1225-ECP	

EQUIVALÊNCIAS RIC - VÁLVULAS DE ESCAPE | RIC EQUIVALENCES - EXHAUST VALVES

MARCA	Nº RIC	Nº ORIGINAL	Nº EATON	Nº BBB	Nº MAHLE
MWM	RE 2047	922.204.601.013	VS 758	3331-E	
FORD	RE 2059	D6NN-6505-A	VS 1117	1329-E	
VW	RE 2061	68109611	VS 1125	1303-EC	
MAXION/PERKINS	RE 2073	70910012	VS 1424	1498-ECP	VE0570112
MWM	RE 2077	922.904.608.074	VS 2696	3391-ECB	VE0130098
MAXION/PERKINS	RE 2079	70910018	VS 2816	3393-ECB	VE0570037
MERCEDES BENZ	RE 2081	3660500227	VS 2535	23260-ECB	VE0480005
MERCEDES BENZ	RE 2083	3660500027	VS 2091	21226-ECB	VE0480097
ASIA	RE 2116	K638-12121		3297-EBN	VE0720155
KIA	RE 2118	OVN0-112121	VS 5282	3549-EBN	VE02110186
MAXION/PERKINS	RE 2130	70910038	VS 2833	3389-ECB	VE0570122
MERCEDES BENZ	RE 2132	3760500127	VS 2750 / VS 4878	23260-ECB	
MWM	RE 2134	961004600024	VS 2825 / VS 4877	23423-ECBS	VE0130100
MWM	RE 2161	940704600024	VS 4896	3547-ECBS	VE0130278
MAXION/PERKINS	RE 2163	500427	VS 5427	23345-ECBS	VE0570230
FIAT	RE 2215	99432837			VE0010212
FORD	RE 2227	87802256			
FIAT	RE 2235	98418161		3587-ECB	
KIA	RE 2251	OK-65112121	VS 5297	3827-EBN	VE02110188
MITSUBISHI	RE 2270	MD-083659		3595-EP	VE01950224
RENAULT	RE 2280	REN-109611C			
HYUNDAI	RE 2310	2221242200		4171-E N	VE 02081302
TOYOTA	RE 2316	1371517010			
TOYOTA	RE 2356	13715-30030	NT	4017-EN	NT
MITSUBISHI	RE 2368	22212-42520	NT	3897-EN	VE1950238
MITSUBISHI	RE 2374	2221242520	VS 5812	3897-E N	VE 1950224
MERCEDES BENZ	RE 2376	6110500127	NT	3659-EN	NT
RENAULT	RE 2378	4506084 / 7701472670	NT	4081-EPN	NT
RENAULT	RE 2380	7701468690	NT	23421-EBS	VE0180308
PEUGEOT	RE 2382	22212- 42520	NT	3303-EC	VE0440586
FIAT IVECO	RE 2384	540238925			
VOLKS/AUDI	RE 2393	03L.109.611		4105EB	
VOLKS/AUDI	RE 2395	03G.109.611D			
NISSAN	RE 2397	13202-AD200		4137-E N	
HYUNDAI/ KIA	RE 2431	22212 4A061			
RENAULT	RE 2443				
FORD	RE 2455			4341EN	
CUMMINS	RE 2461	3940734/5011877		3977-ECB	
FORD	RE 2466			4293-ECP	
GENERAL MOTORS	RE 2482	12625566		4471-ECB	
MITSUBISHI	RE 2486			4311 EN	VESMI32XN
MERCEDES BENZ	RE 2490	6.510.500.127		4531 ECB	
MERCEDES BENZ	RE 3021	3450537105 / 3460530005	VS 1158	1229-ECP	VE0480047

EQUIVALÊNCIAS RIC - VÁLVULAS DE ESCAPE | RIC EQUIVALENCES - EXHAUST VALVES

MARCA	Nº RIC	Nº ORIGINAL	Nº EATON	Nº BBB	Nº MAHLE
MERCEDES BENZ	RE 3055	3260530905	VS 959	1223-E	
CATERPILLAR	RE 3057	5S6459	VS968	573-E	VE0110142
MERCEDES BENZ	RE 3063	3450500127	VS 1128	3263-ECB	VE0480079
MERCEDES BENZ	RE 3065	3550530005	VS 1137	1843-ECP	VE0480009
MERCEDES BENZ	RE 3237	4220500127	VS 4362	1839-ECB	VE0480055
CUMMINS	RE 3243	3920868	VS 4306	3467-ECB	VE0210150
CUMMINS	RE 3245	3921444	VS 4308	3335-ECP	VE0210152
FORD	RE 3255	E2TN-6505-AB	VS 1660	3045-ECP	NT
FORD	RE 3257	E5HN-6505-AA	VS 2361	23029-ECB	NT
VALTRA	RE 3463	836646357		3919-ECB	VE310274
MERCEDES BENZ	RE 3488	541.050.02.27			
AGRALE	RAE 4087	7.008.006.005.009			VC0060905
AGRALE	RE 4089	7.004.006.006.006	VS 935	NT	VE 0060906
AGRALE	RE 4091	7.006.006.006.001	VS 1332	3327-E	VE 0060323
AGRALE	RE 4093	7.007.006.006.009	VS1300	3925-E	VE 0060907
YANMAR	RAE 4094	NT 75 - B - 503			NT
YANMAR	RAE 4095	NT 85 - B - 503			NT
YANMAR	RAE 4096	NT 95 - B 503			NT
YANMAR	RE 4098	NS11-11-110		3367-E	
YANMAR	RE 4100	NS18-11-110		3371-EC	
YANMAR	RE 4102	NS90-11-110		3365-E	
HONDA	RE 5171	147711383000BR	VS 4919	23293-EP	VE0510046
HONDA	RE 5173	147214370000BR	VS 5012	23409-ECSS	VE0510117
HONDA	RE 5175	14721KY08901R	VS 4995	23417-ECBS	VE0510030
HONDA	RE 5177	14721KF0000		23419-ECB	VE0510135
HONDA	RE 5181	14721KG0000		23411-EBN	VE0510133
HONDA	RE 5183	14721413000		1647-EB	VE0510192
HONDA	RE 5187	14721KGAB000-R		3839-E N	VE0510069
YAMAHA	RE 5189	5H01212101			
HONDA	RE 5191	14721KW9000R		1002-ECB	
HONDA	RE 5193	14721GF60101		1011-ESN	VE0510127
YAMAHA	RE 5195	5HH1212100		3951-EBN	VE0520200
HONDA	RE 5197	14721-KPF-9000-RWI		3953-EBN	VE0510129
HONDA	RE 5217	14721KRM8400		3905-ECB	VE0510198
SUNDOWN	RE 5231	031ACV0011			
SUNDOWN	RE 5233	071ACV0006			
HONDA	RE 5239	14721-KSS900		4067-ECB	VE0510228
SUZUKI	RE 5292	1291212F50			
HONDA	RE 5401	14721-KWG-600			VE0511478
HONDA	RE 5435	14721-KCY-670			
HONDA	RE 5437	14721-KRE-G00			
SUZUKI	RE 5472	12912-25H01-000			
HONDA	RE 5492				
HONDA	RE 5494				

EQUIVALÊNCIAS RIC - VÁLVULAS DE ESCAPE | RIC EQUIVALENCES - EXHAUST VALVES

MARCA	Nº RIC	Nº ORIGINAL	Nº EATON	Nº BBB	Nº MAHLE
MBB TOP BRAKE	RE 6003	4420160391	VS 5611	3693-E	
MBB TOP BRAKE	RE 6004	5410160791	VS 5617	3875-EC	
VW COMPETIÇÃO	RE 6007				
GM COMPETIÇÃO	RE 6010				
MBB TOP BRAKE	RE 6018	A9060160791	VS 5616	3874-EC	
VW COMPETIÇÃO	RE 6203				
VW COMPETIÇÃO	RE 6205				
VW COMPETIÇÃO	RE 6224				



EXCELÊNCIA NA FABRICAÇÃO DE VÁLVULAS TECNOLOGIA 100% BRASILEIRA

A RIC Componentes, empresa 100% nacional, tradicional fabricante de válvulas de admissão e escape, vem solidificando sua presença no mercado, através da comprovação da qualidade de seus produtos e dos constantes investimentos em seu processo produtivo.

Com produtos de qualidade, a RIC vem conquistando o mercado interno e externo e fidelizando clientes e usuários.

QUALIFICAÇÃO, EXCELÊNCIA E GARANTIA

Por atender as exigências internacionais de qualidade a RIC Componentes é certificada com a ISO 9001 podendo ser fornecedora de produtos em nível mundial.

COMPETÊNCIA BRASILEIRA PARA O MUNDO



EXCELLENCE IN VALVES MANUFACTURE. BRAZILIAN TECHNOLOGY

RIC COMPONENTS, 100% brazilian company, is a traditional manufacture of intake and exhaust valves, has been strengthening participation in the global market by proving the quality of the products and constant investments in the production process.

With high quality products, RIC has been winning the global market and loyalt to the customers and users.

QUALIFICATION AND EXCELLENCE

By meeting international quality requirements, RIC Components is certified with ISO 9001 and can be a supplier of products worldwide.

RIC COMPONENTS, BRAZILIAN COMPETENCE FOR THE WORLD

RIC **componentes**

Rua Coronel Gonçalves, 270 | Eugênio de Melo, São José
dos Campos - SP - Brasil
CEP 12247-002 | Tel.: +55 12 3905-5100
vendas@riccomponentes.com.br

270 Coronel Gonçalves ST. | Eugenio de Melo,
Sao Jose dos Campos - SP - Brazil
ZIP 12247-002 | Phone: +55 12 3905-5100

WWW.RICCOMPONENTES.COM.BR

