

**VÁLVULAS**  
**ENGINE VALVES**

**RIC**  
**componentes**

**CATÁLOGO | CATALOG**  
**2025 | 2026**



# *A MAIS COMPLETA LINHA DE VÁLVULAS PARA MOTORES A COMBUSTÃO*

*VÁLVULAS | ENGINE VALVES*



## ÍNDICE | INDEX

VÁLVULAS  
ENGINE VALVES

**RIC**  
componentes

CATÁLOGO | CATALOG  
2025 | 2026

**USO DESTE CATÁLOGO** 01  
**CATALOG USE**

**VÁLVULAS - CATÁLOGO DE APLICAÇÕES** 03  
**VALVES - APPLICATIONS CATALOG**

AGRALE | ASIA | AUDI 03

CATERPILLAR | CHERY | CITROEN | CUMMINS | FIAT 04

FIAT 05

FIAT | FORD WILLYS | FORD / AUTOLATINA | FORD 06

FORD | GENERAL MOTORS 07

GENERAL MOTORS 08

GENERAL MOTORS | HONDA | HYUNDAI 09

HYUNDAI | KIA | MAXION / PERKINS 10

MAXION / PERKINS | MAZDA | MERCEDES BENZ - FREIO MOTOR | MERCEDES BENZ 11

MERCEDES BENZ | MITSUBISHI 12

MITSUBISHI | MWM | NISSAN | PEUGEOT | 13

PEUGEOT | RENAULT 14

RENAULT | TOYOTA | VALTRA | VOLKSWAGEN 15

VOLKSWAGEN 16

VOLKSWAGEN | YANMAR 17

**VÁLVULAS ESPECIAIS PARA COMPETIÇÕES**  
**SPECIAL VALVES - FOR COMPETITION**

VOLKSWAGEN 18

GENERAL MOTORS 18

**VÁLVULAS PARA MOTOCICLETAS**  
**MOTORCYCLE VALVES**

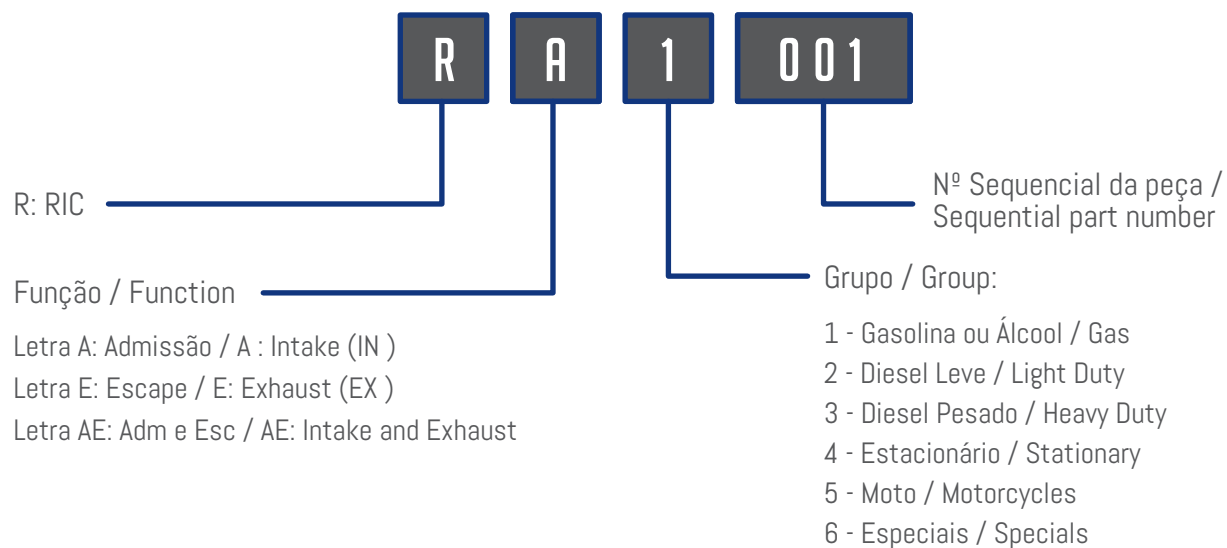
HONDA 18

HONDA | YAMAHA | SUZUKI | SUNDOWN 19

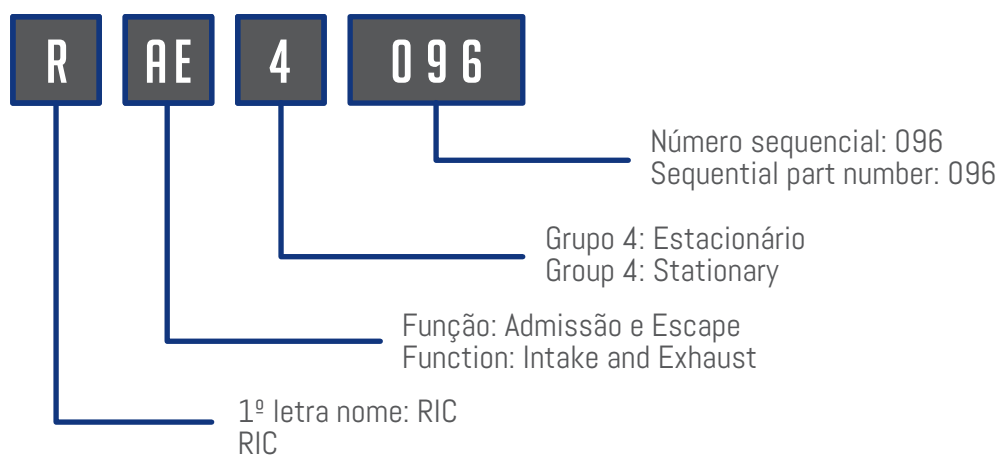
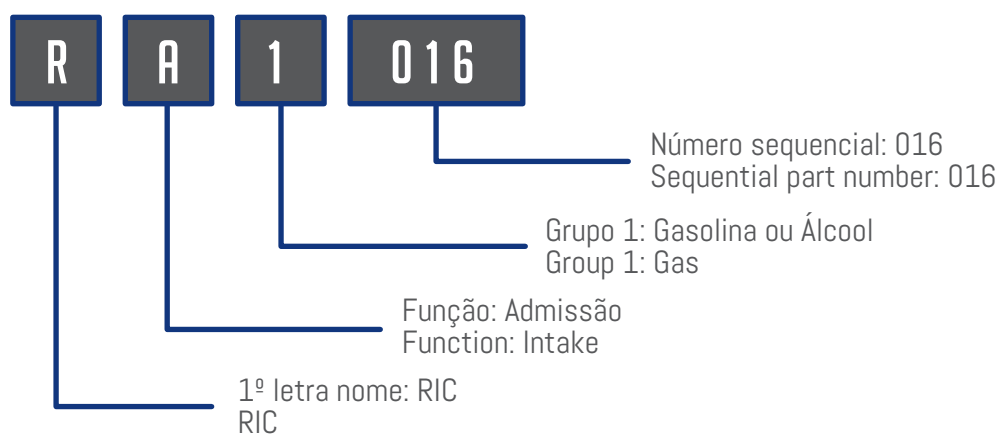
**EQUIVALÊNCIAS RIC - VÁLVULAS DE ADMISSÃO/ESCAPE**  
**RIC EQUIVALENCES - INTAKE/EXHAUST VALVES**

20 - 35

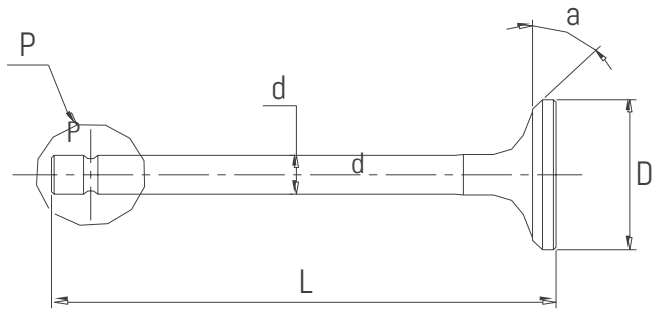
## USO DESTE CATÁLOGO / CATALOG USE



## EXEMPLOS / EXAMPLE



## DIMENSÕES BÁSICAS / BASIC DIMENSION



(DESENHO ILUSTRATIVO / ILLUSTRATIVE DRAWING)

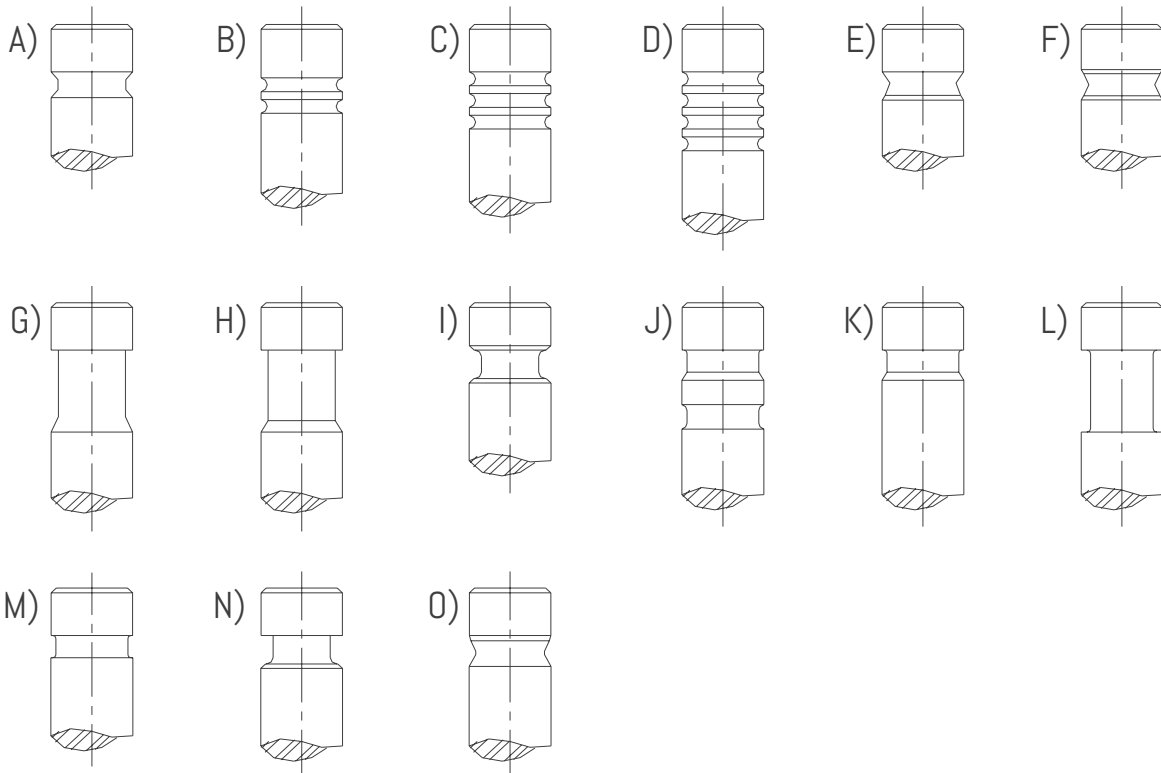
L

a

D - Ø da Cabeça / Head diameter  
 d - Ø da Haste / Stem diameter  
 L - Comprimento total / Total length  
 a - Ângulo de Sede / Seat angle  
 P - Tipo de Ponta / End types

## TIPOS DE PONTA / END TYPES

CANALETA / RANHURA  
 DESENHO ILUSTRATIVO / ILLUSTRATIVE DRAWING



## TABELA DE SOBREMEDIDA / OVERMEASURE TABLE

HASTE / STEM	POLEGADAS / INCHES	MILÍMETROS / MILIMETERS
STD	STD	STD
+3	0,003"	0,075"
+6	0,006"	0,150"
+12	0,012"	0,300"

# VÁLVULAS - CATÁLOGO DE APLICAÇÕES | VALVES - APPLICATIONS CATALOG

CARRO DE PASSAGEIRO / COMERCIAIS / CAMINHÕES / ÔNIBUS / MÁQUINAS AGRÍCOLAS / MOTOCICLETAS / ESPECIAIS / COMPETIÇÃO  
 CARS / COMMERCIALS / TRUCKS / BUSES / AGRICULTURAL MACHINES / MOTORCYCLES / SPECIALS / COMPETITION

MODELOS	MOTORES	CIL.	COMB.	FUNÇÃO	N° RIC	C. TOTAL	Ø CABEÇA	Ø HASTE	HASTE	ÂNGULO	PTA
MODELS	ENGINES	CYL	FUEL	FUNCTION	RIC P/N	TOTAL LENGTH	Ø HEAD	Ø STEM	STEM	ANGLE	TIP

## AGRALE

suitable for

TRATOR: T-213 / T-440 / E-573 / E673	M-70 / M-73	1	DIESEL	ADM/ESC	RAE 4087	74,80	30,40	6,95	STD	45	A
TRATOR: T-216 / T-415 / T-416 / E-80 / E-85	M-80 / M-85	1	DIESEL	ADM	RA 4088	121,50	34,10	7,95	STD	45	L
				ESC	RE 4089	121,50	31,10	7,95	STD	45	L
TRATOR: 4100 / T-416 / T-420 / E89	M-90 / M-93 ID	1	DIESEL	ADM	RA 4090	121,50	41,10	7,95	STD	45	L
				ESC	RE 4091	121,50	35,10	7,95	STD	45	L
TRATOR: TX1100 / 4200 / T-440 / 4200	M-790	2	DIESEL	ADM	RA 4092	132,00	39,00	8,94	STD	45	A
				ESC	RE 4093	132,00	35,00	8,94	STD	45	A

## ASIA

TOPIC	2.7L	4/6	DIESEL	ADM	RA 2115	114,40	40,40	7,94	STD	45	A
				ESC	RE 2116	114,55	36,00	7,93	STD	30	A
TOWNER	AB-CB 1.0L - 6V	2/3	GASOLINA	ADM	RA 1299	101,70	36,00	6,94	STD	45	A
				ESC	RE 1300	101,60	33,00	6,93	STD	45	A
NOVA TOWNER HAFEEI (VAN/PICK-UP/FURGÃO)	1.0L - 8V	4	GASOLINA	ADM	RA 1385	109,65	31,50	6,97	STD	45	A
				ESC	RE 1386	109,55	27,50	6,96	STD	45	A

## AUDI

A3 (96....) / S3 (98....) / S4 (94-99)	AGU / AGN / AFY / ADR / AEB / AJL / AQA / APY / AJQ	4	GASOLINA	ADM	RA 1262	105,10	26,90	5,96	STD	45	C
A4 (94....) / A6 (97....)	1.8L - 20V (TURBO E ASPIRADO)										
A4 (97....) / A6 (97....) / S4 (99....)	AGA / AJG / ALF / APZ / APS	V6	GASOLINA	ADM	RA 1262	105,10	26,90	5,96	STD	45	C
	24L - 30V (TURBO E ASPIRADO)										
A4 / A6 (97....) / A4II / S4 / A8	ACK / ALG / APR / AQD	V6	GASOLINA	ADM	RA 1262	105,10	26,90	5,96	STD	45	C
S8 (96....) / S4 (99....)	2.7L - 30V (TURBO E ASPIRADO)										
S4 / Avant / A4 II	AGB 2.7L - 30V	V6	GASOLINA	ADM	RA 1262	105,10	26,90	5,96	STD	45	C
	2.8L - 30V (TURBO E ASPIRADO)										
A3 (96....) / A4 (94....) / A6	AGU / AEB / AJL / AGB / APY / AJQ / AQA	4	GASOLINA	ESC	RE 1263	103,90	29,90	5,94	STD	45	C
S4 (97....) / S3 (98....)	(TURBO)	V6									
A3 (96....) / A4 (94....) / S4 (94....)	AGN / ADR / AGA / AJG / ALF / ACK / ALG	4	GASOLINA	ESC	RE 1264	104,10	29,90	5,94	STD	45	C
	AFB / AKN / APZ / APS / APR / AQD	6									
	(ASPIRADO)	V6									
A3 / A4 / A5 / A6 / Q5 / TT	2.0L - 16V TDI	4	DIESEL	ADM	RA 2392	99,30	28,10	5,97	STD	45	C
				ESC	RE 2393	99,10	26,00	5,96	STD	45	C
A3 / A4	2.5L - 16V TDI	4	DIESEL	ADM	RA 2394	88,60	29,50	5,98	STD	45	C
				ESC	RE 2395	88,00	25,50	5,97	STD	45	C
AUDI Q7 / A6 / A3	1.8L - 2.0L 16V / 2.5L 20V	4	GASOLINA	ADM	RA 1424	104,00	33,90	5,98	STD	45	C
				ESC	RE 1425	101,80	28,00	5,96	STD	45	C
A3	TFSI 1. 4L 16V	4	FLEX	ADM	RA 1467	110,25	28,55	4,98	STD	45	C
				ESC	RE 1468	110,05	25,00	4,97	STD	30	C

# VÁLVULAS - CATÁLOGO DE APLICAÇÕES | VALVES - APPLICATIONS CATALOG

CARRO DE PASSAGEIRO / COMERCIAIS / CAMINHÕES / ÔNIBUS / MÁQUINAS AGRÍCOLAS / MOTOCICLETAS / ESPECIAIS / COMPETIÇÃO  
 CARS / COMMERCIALS / TRUCKS / BUSES / AGRICULTURAL MACHINES / MOTORCYCLES / SPECIALS / COMPETITION

MODELOS	MOTORES	CIL.	COMB.	FUNÇÃO	N° RIC	C. TOTAL	Ø CABEÇA	Ø HASTE	HASTE	ÂNGULO	PTA
MODELS	ENGINES	CYL	FUEL	FUNCTION	RIC P/N	TOTAL LENGTH	Ø HEAD	Ø STEM	STEM	ANGLE	TIP

## CATERPILLAR

suitable for

977 / 11K / 761	3304 / 3304T / 3306 / 3306T (ASP/ TURBO INJ. DIRETA)	4/6	DIESEL	ADM	RA 3056	139,95	51,30	9,44	STD	30	B
	ESC			RE 3057	138,92	48,16	9,44	STD	30	B	

## CHERY

CHERY QQ	1.1L - 16V L4 DOHS	4	GASOLINA	ADM	RA 1514	79,00	24,50	4,97	STD	45	A
				ESC	RE 1515	79,20	21,00	4,96	STD	45	A

## CITROEN

XSARA / PICASSO / C3 / BERLINGO	TU5JP4 1.6L - 16V	4	GASOLINA	ADM	RA 1283	103,80	31,30	5,97	STD	45	A
			FLEX	ESC	RE 1284	104,40	24,50	5,97	STD	45	A
XSARA / XANTIA / PICASSO	XU7JP4 1.8L - 16V	4	GASOLINA	ADM	RA 1285	106,40	34,60	5,97	STD	45	A
				ESC	RE 1286	105,80	29,60	5,97	STD	45	A
XSARA / XANTIA / PICASSO / C4 / C5	EW 10 2.0L - 16V (2001...)	4	GASOLINA	ADM	RA 1287	106,20	33,30	5,97	STD	45	A
				ESC	RE 1288	103,70	29,00	5,97	STD	45	A
XSARA / BERLINGO / C4 / C5	XU7JP 1.8L - 8V	4	GASOLINA	ADM	RA 1311	108,55	41,50	7,96	STD	45	A
				ESC	RE 1312	108,40	34,50	7,96	STD	45	A
C3	TU3JP 1.4L - 8V	4	FLEX	ADM	RA 1314	112,76	36,73	6,98	STD	45	A
				ESC	RE 1282	112,65	29,20	6,96	STD	45	A
CITROEN C3 / C3 PICASSO	TU4M - 1.5L - 8V	4	FLEX	ADM	RA 1410	112,40	37,70	5,98	STD	45	A
				ESC	RE 1411	112,50	30,20	5,97	STD	45	A
C3 / C4	ET3J4 1.4L - 16V	4	FLEX	ADM	RA 1458	100,80	28,30	5,49	STD	45	C
				ESC	RE 1459	101,20	24,50	5,47	STD	45	C

## CUMMINS

SÉRIE B	5.9L (6B / 6BT / 6BTA / 6BTAA)	4/6	DIESEL	ADM	RA 3242	129,10	45,00	7,97	STD	30	F
				ESC	RE 3243	129,00	42,00	7,97	STD	45	F
SÉRIE C	8.3L (6C / 6CT / 6CTA / 6CTAA)	6	DIESEL	ADM	RA 3244	151,10	52,00	9,48	STD	30	F
				ESC	RE 3245	150,90	46,00	9,48	STD	45	F
ISB ELETRÔNICO 260.300	L6 359 CI (5.915B)	4/6	DIESEL	ADM	RA 2460	124,60	33,00	7,00	STD	30	A
				ESC	RE 2461	124,30	33,00	7,00	STD	45	A

## FIAT

147 / UNO / CITY / MILLE / ELBA / PREMIO / OGGI / FIORINO / PANORAMA	1000 / 1050 / 1300CC	4	GASOLINA	ADM	RA 1016	110,20	34,00	7,98	STD	45	A
	(CARBURADO / INJ. ELETRÔNICA)		ALCOOL	ESC	RE 1017	110,60	29,00	7,98	STD	45	A
UNO / ELBA / PREMIO	1500CC	4	GASOLINA	ADM	RA 1040	108,50	36,00	7,98	STD	45	F
	(ARGENTINO)		ALCOOL	ESC	RE 1041	109,00	33,15	7,98	STD	45	F
UNO / ELBA / PREMIO / DUNA / FIORINO / PICK-UP / TIPO	1.6L - 8V	4	GASOLINA	ADM	RA 1074	108,50	39,50	7,98	STD	45	F
			ALCOOL	ESC	RE 1075	109,00	31,00	7,98	STD	45	F
PREMIO / ELBA / FIORINO / PICKUP	1500CC FIASA - BRASIL	4	GASOLINA	ADM	RA 1084	110,20	36,50	7,98	STD	45	A
	(CARBURADO / INJ. ELETRÔNICA)		ALCOOL	ESC	RE 1017	110,60	29,00	7,98	STD	45	A

# VÁLVULAS - CATÁLOGO DE APLICAÇÕES | VALVES - APPLICATIONS CATALOG

CARRO DE PASSAGEIRO / COMERCIAIS / CAMINHÕES / ÔNIBUS / MÁQUINAS AGRÍCOLAS / MOTOCICLETAS / ESPECIAIS / COMPETIÇÃO  
 CARS / COMMERCIALS / TRUCKS / BUSES / AGRICULTURAL MACHINES / MOTORCYCLES / SPECIALS / COMPETITION

MODELOS	MOTORES	CIL.	COMB.	FUNÇÃO	N° RIC	C. TOTAL	Ø CABEÇA	Ø HASTE	HASTE	ÂNGULO	PTA
MODELS	ENGINES	CYL	FUEL	FUNCTION	RIC P/N	TOTAL LENGTH	Ø HEAD	Ø STEM	STEM	ANGLE	TIP
<b>FIAT</b>											
PALIO STRADA (2000...)	1.5L - 8V	4	GASOLINA	ADM	RA 1084	110,20	36,50	7,98	STD	45	A
				ESC	RE 1139	110,60	31,00	7,98	STD	45	A
TEMPRA SW / TEMPRA / TIPO	2.0L - 16V	4	GASOLINA	ADM	RA 1105	127,93	34,40	6,98	STD	45	F
	(INJEÇÃO ELETRÔNICA)			ESC	RE 1106	125,65	28,40	6,98	STD	45	F
PALIO / SIENA / MAREA / BRAVO / DOBLÔ	1.6L - 16V TORQUE	4	GASOLINA	ADM	RA 1126	102,50	30,40	6,99	STD	45	F
LINEA LX / HLX 09/11	1.9L - 16V LX / HLX		FLEX	ESC	RE 1127	102,35	30,00	6,98	STD	45	F
PALIO / PALIO WEEKEND / PICK-UP TRECKING / WORKING	1.0L / 1.5L - 8V	4	GASOLINA	ADM	RA 1140	110,20	36,50	7,98	STD	45	A
	MPI			ESC	RE 1141	110,60	29,40	7,98	STD	45	A
MILLE / PALIO / SIENA	1.0L / 1.3L - 8V	4	GASOLINA	ADM	RA 1142	96,80	31,40	6,99	STD	45	F
	FIRE			ESC	RE 1143	97,15	27,15	6,98	STD	45	F
PALIO / SIENA	1.0L / 1.3L - 16V	4	GASOLINA	ADM	RA 1144	95,20	26,90	5,99	STD	45	C
	FIRE			ESC	RE 1145	96,04	22,40	5,98	STD	45	C
MAREA / MAREA WEEKEND	2.0L - 20V	5	GASOLINA	ADM	RA 1146	113,02	30,00	6,97	STD	45	C
				ESC	RE 1147	108,58	26,00	6,97	STD	45	C
TEMPRA / TEMPRA SW / TIPO	2.0L - 8V	4	GASOLINA	ADM	RA 1198	105,80	43,50	7,98	STD	45	F
				ESC	RE 1199	106,00	36,10	7,98	STD	45	F
DUCATO / DAILY / NEW DAILY TD (1996...)	2.5L / 2.8L	4	DIESEL	ADM	RA 2214	120,75	40,87	7,99	STD	30	A
	(ASPIRADO e TURBINADO) EURO I e EURO II			ESC	RE 2215	121,90	35,80	7,98	STD	45	A
DUCATO / DAILY	2.8L - INJEÇÃO DIRETA	4	DIESEL	ADM	RA 2234	122,00	43,50	7,99	STD	30	A
	(ASPIRADO) EURO I e EURO II			ESC	RE 2215	121,90	35,80	7,98	STD	45	A
DUCATO MAXI TD 34 / 49 / 59.12 / NEW DAILY TD (1990...)	2.5L	4	DIESEL	ADM	RA 2234	122,00	43,50	7,99	STD	30	A
	(ASPIRADO) EURO I			ESC	RE 2235	122,00	36,50	7,98	STD	45	A
MAREA / STILO / BRAVA / ALFA 145 / 146 / 155 / 156	MAREA 1.8L / 2.4L - 16V / 20V BRAVA 1.8L - 16V ALFA 1.8L / 2.0L - 16V	4/5	GASOLINA	ADM	RA 1252	113,10	33,60	6,99	STD	45	C
				ESC	RE 1253	108,45	28,20	6,97	STD	45	C
STILO	1.8L - 8V	4	GASOLINA	ADM	RA 1260	101,50	38,00	7,01	STD	44	E
	(POWER TRAIN)		FLEX	ESC	RE 1261	101,50	31,00	6,99	STD	44	E
PALIO / PALIO WEEKEND / PUNTO / SIENA / STRADA	1.4L - 8V FIRE / EVO	4	FLEX	ADM	RA 1271	98,20	33,20	4,99	STD	45	C
				ESC	RE 1272	98,80	27,30	4,98	STD	45	C
PALIO / SIENA FIRE (FASE II / III)	FIRE 1.4L-8V	4	FLEX	ADM	RA 1271	98,20	33,20	4,99	STD	45	C
				ESC	RE 1464	98,75	27,95	4,99	STD	30	C
MILLE / PALIO / NOVO PALIO	1.0L - 8V	4	GASOLINA	ADM	RA 1293	97,00	31,40	6,99	STD	45	F
	FIRE		ALCOOL	ESC	RE 1294	97,15	27,15	6,98	STD	45	F
MILLE ECONOMY / PALIO FIRE ECONOMY /	1.0L / 1.4L - 8V	4	GASOLINA	ADM	RA 1313	98,20	31,40	4,99	STD	45	C
MILLE WAY ECONOMY	FIRE / EVO (SET 2008...)		ALCOOL	ESC	RE 1272	98,80	27,30	4,98	STD	45	C
DUCATO MULTIJET	2.3L - 16V	4	DIESEL	ADM	RA 2383	120,40	30,00	5,99	STD	45	C
	F1A			ESC	RE 2384	120,40	30,00	5,98	STD	45	C

suitable for

# VÁLVULAS - CATÁLOGO DE APLICAÇÕES | VALVES - APPLICATIONS CATALOG

CARRO DE PASSAGEIRO / COMERCIAIS / CAMINHÕES / ÔNIBUS / MÁQUINAS AGRÍCOLAS / MOTOCICLETAS / ESPECIAIS / COMPETIÇÃO  
CARS / COMMERCIALS / TRUCKS / BUSES / AGRICULTURAL MACHINES / MOTORCYCLES / SPECIALS / COMPETITION

MODELOS	MOTORES	CIL.	COMB.	FUNÇÃO	N° RIC	C. TOTAL	Ø CABEÇA	Ø HASTE	HASTE	ÂNGULO	PTA
MODELS	ENGINES	CYL	FUEL	FUNCTION	RIC P/N	TOTAL LENGTH	Ø HEAD	Ø STEM	STEM	ANGLE	TIP
<b>FIAT</b>											
TIPO / UNO / ELBA / PREMIO / FIORINO / PICK-UP	1.4L - 8V	4	GASOLINA	ADM	RA 1391	108,55	37,50	7,99	STD	45	F
	1.6L - 8V		ALCOOL	ESC	RE 1075	109,00	31,00	7,98	STD	45	F
PALIO/ PALIO WEEKEND / NOVO PALIO SPORTING / STRADA / PUNTO / IDEA / NOVO SIENA / ADVENTURE BRAVO / FIAT 500 / DOBLO / LINEA	1.6L / 1.8L - 16V	4	FLEX	ADM	RA 1398	109,75	30,70	5,96	STD	45	C
	E-TORQ			ESC	RE 1399	118,50	23,30	5,93	STD	45	C
PALIO / SIENA FASE II / 500 (ANO 2000)	FIRE MPFI 1.3L - 16V	4	FLEX	ADM	RA 1404	95,40	26,90	5,99	STD	45	C
				ESC	RE 1405	94,70	22,40	5,98	STD	45	C
NOVO UNO (APÓS 2011) / NOVO PALIO / PUNTO / SIENA / GRAND SIENA (APÓS 2013) / CINQUECENTO (APÓS 2012)	EVO 1.4L - 8V	4	GASOLINA	ADM	RA 1416	99,90	33,25	4,99	STD	45	C
			FLEX	ESC	RE 1417	100,45	27,95	4,98	STD	45	C
ARGO / BRAVO (2011...) / DOBLO (2010...) / GRAND SIENA (2012...) / IDEA (2011-16) / LINEA (2015-16) / NOVO PALIO (2012...)	MOTOR E-TORQ 1.8L 16V	4	FLEX	ADM	RA 1452	109,50	31,50	5,95	STD	45	C
PALIO WEEKEND ( 2013...) / PUNTO (2013-17) / STRADA ( 2013...) / TORO ( 2017) / RENEGADE				ESC	RE 1453	117,50	25,00	5,92	STD	45	C
UNO / MOBI / ARGO / CRONOS	FIRE FLY 1.0L - 6V FIRE FLY 1.3L - 8V	3/4	FLEX	ADM	RA 1473	96,80	36,10	4,99	STD	45	C
				ESC	RE 1474	95,20	29,10	4,98	STD	45	C
MOBI / UNO	FIRE FE 1.0L-8V SOHC L4 (2017....)	4	FLEX	ADM	RA 1511	98,65	31,40	4,99	STD	45	C
				ESC	RE 1417	100,45	27,95	4,98	STD	45	C
TORO / JEEP RENEGADE / JEEP COMPASS	MULT JET II 2.0L - 16V SOHC L4 (2015...)	4	DIESEL	ADM	RA 2521	114,50	27,80	4,99	STD	45	C
				ESC	RE 2522	114,50	24,40	4,98	STD	45	C
<b>FORD WILLYS</b>											
JEEP / RURAL / PICK UP / AERO WILLYS	2600	4	GASOLINA	ADM	RA 1001	115,19	44,45	9,49	STD	45	L
	2600 (ATÉ 1964)			ESC	RE 1002	117,16	32,66	8,64	STD	45	M
JEEP / RURAL / PICK UP / MAVERICK	3000 ( 1973...)	4	GASOLINA	ADM	RA 1001	115,19	44,45	9,49	STD	45	L
				ESC	RE 1103	130,10	35,84	8,64	STD	45	M
ITAMARATY	2600 (1964...)	4	GASOLINA	ESC	RE 1003	117,40	35,83	8,64	STD	45	M
<b>FORD / AUTOLATINA</b>											
BELINA / DEL REY / ESCORT / PAMPA / VERONA	(VOLKSWAGEN ) AP 600 / 800 / 2000	4	GASOLINA	ADM	RA 1032	98,65	37,95	7,96	STD	45	C
VERSAILLES			ALCOOL	ESC	RE 1033	98,45	33,15	7,94	STD	45	C
<b>FORD</b>											
BELINA II / CORCEL II / DEL REY / ESCORT / ESCORT HOBBY / PAMPA	CHT 1.3L / AE 1000	4	GASOLINA	ADM	RA 1038	96,55	32,10	6,98	STD	45	G
	(AG0. 1983...)		ALCOOL	ESC	RE 1039	96,17	28,40	6,96	STD	45	G
BELINA II / CORCEL II / DEL REY / ESCORT / PAMPA / VERONA	CHT1.6L / AE 1600	4	ALCOOL	ADM	RA 1038	96,55	32,10	6,98	STD	45	G
				ADM	RA 1085	97,05	36,37	6,98	STD	45	G
				ESC	RE 1039	96,17	28,40	6,96	STD	45	G
TRATOR: 4600 / 4610 / 5600 / 5610 / 6600 / 6610	FNH 201 / 256 / 268	3/4	DIESEL	ADM	RA 2058	145,86	45,84	9,43	STD	45	K
				ESC	RE 2059	145,86	38,35	9,41	STD	45	J

suitable for

# VÁLVULAS - CATÁLOGO DE APLICAÇÕES | VALVES - APPLICATIONS CATALOG

CARRO DE PASSAGEIRO / COMERCIAIS / CAMINHÕES / ÔNIBUS / MÁQUINAS AGRÍCOLAS / MOTOCICLETAS / ESPECIAIS / COMPETIÇÃO  
 CARS / COMMERCIALS / TRUCKS / BUSES / AGRICULTURAL MACHINES / MOTORCYCLES / SPECIALS / COMPETITION

MODELOS	MOTORES	CIL.	COMB.	FUNÇÃO	N° RIC	C. TOTAL	Ø CABEÇA	Ø HASTE	HASTE	ÂNGULO	PTA
MODELS	ENGINES	CYL.	FUEL	FUNCTION	RIC P/N	TOTAL LENGTH	Ø HEAD	Ø STEM	STEM	ANGLE	TIP
<b>FORD</b>											
CORCEL II / BELINA II / DEL REY	OHC 1.4L / 1.6L	4	GASOLINA	ADM	N.T.						
	(NOV 1982...)		ALCOOL	ESC	RE1107	89,26	28,40	6,97	STD	45	G
FIESTA / KA / ENDURA	1.0L - 8V	4	GASOLINA	ADM	RA 1108	104,05	32,90	7,03	STD	45	C
	1.3L - 8V			ADM	RA 1109	104,05	34,50	7,03	STD	45	C
	1.0L / 1.3L - 8V			ESC	RE 1110	104,37	29,00	7,00	STD	45	C
ESCORT (1997...)	1.8L / 2.0L - 16V	4	GASOLINA	ADM	RA 1164	97,10	32,00	6,02	STD	45	C
MONDEO (1997...)	ZETEC - 3 CANALETAS			ESC	RE 1165	96,85	28,00	6,01	STD	45	C
FIESTA / KA / COURIER	1.4L / 1.6L - 16V	4	GASOLINA	ADM	RA 1166	97,43	28,15	5,96	STD	45	C
	ZETEC / ROCAM			ESC	RE 1167	99,64	24,13	5,95	STD	45	C
FIESTA / KA / COURIER / (ANTIGA - RA 1297/ RE 1298)	1.0L - 8V	4	GASOLINA	ADM	RA 1168	111,08	32,45	5,97	STD	45	C
	ZETEC / ROCAM			ESC	RE 1169	110,56	28,00	5,95	STD	45	C
NEW HOLLAND - GENESIS (NA) - SÉRIE 30	SÉRIE 30	6	DIESEL	ADM	RA 2226	146,75	47,40	9,43	STD	30	D
				ESC	RE 2227	146,50	42,98	9,42	STD	45	D
CARGO	4.4L / 6.6L	6	DIESEL	ADM	RA 3254	145,90	46,65	9,43	STD	30	K
				ESC	RE 3255	145,85	40,15	9,41	STD	45	K
CARGO	7.8L	6	DIESEL	ADM	RA 3256	156,50	47,50	9,43	STD	30	K
				ESC	RE 3257	156,50	43,00	9,41	STD	45	K
ECOSPORT / MONDEO / FOCUS / FIESTA / KA / COURIER	1.6L - 8V	4	GASOLINA	ADM	RA 1275	109,60	40,00	5,96	STD	45	C
	ZETEC / ROCAM		FLEX	ESC	RE 1276	109,80	34,00	5,96	STD	45	C
ESCORT (1997...)	1.8L / 2.0L - 16V	4	GASOLINA	ADM	RA 1319	97,10	32,00	6,04	STD	45	A
MONDEO (1994 ATÉ 1996)	1 CANALETA			ESC	RE 1320	96,90	28,00	6,02	STD	45	A
ECOSPORT / MONDEO / FUSION / RANGER	2.0L - 16V DURATEC	4	FLEX	ADM	RA 1339	103,45	35,00	5,48	STD	45	A
	2.3L - 16V (01 CANALETA)			ESC	RE 1340	104,65	30,00	5,47	STD	45	A
NEW FIESTA/FOCUS/ECOSPORT (2011...)	1.6L - 16V	4	FLEX	ADM	RA 1412	99,00	30,10	5,97	STD	45	C
	SIGMA			ESC	RE 1413	101,50	24,20	5,96	STD	45	C
FORD TRANSIT	2.4L - 16V D4FA	4	DIESEL	ADM	RA 2454	122,10	31,40	6,94	STD	30	C
				ESC	RE 2455	122,50	27,85	6,93	STD	45	C
TRANSIT / RANGER	TDCI 2.2L / 3.2L	4/5	DIESEL	ADM	RA 2465	122,30	29,80	6,94	STD	30	C
				ESC	RE 2466	122,05	25,80	6,93	STD	45	C
KA	1.0L - 12V	3	FLEX	ADM	RA 1477	96,30	27,20	4,97	STD	45	C
				ESC	RE 1478	98,00	23,00	4,96	STD	30	C
KA	1.5L - 12V	3	FLEX	ADM	RA 1495	99,10	34,10	5,44	STD	45	C
				ESC	RE 1496	107,15	28,60	5,43	STD	45	C
<b>GENERAL MOTORS</b>											
OPALA / CARAVAN / VERANEIO / C10 / C20 / A10 / A20 (1969 até 1980)	151 / 250	4/6	GASOLINA ALCOOL	ADM	RA 1026	124,74	43,68	8,67	STD	45	J
				ESC	RE 1027	125,03	38,10	8,66	STD	45	J
				ADM	RA 1048	124,74	43,68	8,76	+3	45	J
				ESC	RE 1049	125,03	38,10	8,75	+3	45	J

suitable for

# VÁLVULAS - CATÁLOGO DE APLICAÇÕES / VALVES - APPLICATIONS CATALOG

CARRO DE PASSAGEIRO / COMERCIAIS / CAMINHÕES / ÔNIBUS / MÁQUINAS AGRÍCOLAS / MOTOCICLETAS / ESPECIAIS / COMPETIÇÃO  
 CARS / COMMERCIALS / TRUCKS / BUSES / AGRICULTURAL MACHINES / MOTORCYCLES / SPECIALS / COMPETITION

MODELOS	MOTORES	CIL.	COMB.	FUNÇÃO	N° RIC	C. TOTAL	Ø CABEÇA	Ø HASTE	HASTE	ÂNGULO	PTA
MODELS	ENGINES	CYL.	FUEL	FUNCTION	RIC P/N	TOTAL LENGTH	Ø HEAD	Ø STEM	STEM	ANGLE	TIP

## GENERAL MOTORS

suitable for

OPALA / CARAVAN / VERANEIO / C10 / C20 / A10 / A20 (1969 até 1980)	151 / 250	4/6	GASOLINA ALCOOL	ADM	RA 1050	124,74	43,68	9,06	+6	45	J
				ESC	RE 1051	125,03	38,10	9,05	+6	45	J
				ADM	RA 1052	124,74	43,68	9,44	+12	45	J
				ESC	RE 1053	125,03	38,10	9,43	+12	45	J
CHEVETTE / MARAJÓ / HATCH / CHEVY 500	1. 4L / 1.6L	4	GASOLINA ALCOOL	ADM	RA 1028	98,50	39,00	7,98	STD	44	A
				ESC	RE 1029	99,00	32,00	7,96	STD	44	A
				ADM	RA 1066	98,50	39,00	8,05	+3	44	A
				ESC	RE 1067	99,00	32,00	8,03	+3	44	A
				ADM	RA 1068	98,50	39,00	8,13	+6	44	A
				ESC	RE 1069	99,00	32,00	8,11	+6	44	A
MONZA	1.8L - FASE I	4	GASOLINA	ADM	RA 1036	106,10	41,00	7,98	STD	44	E
	CARBURADO		ALCOOL	ESC	RE 1037	106,10	35,00	7,96	STD	44	E
MONZA / KADETT / IPANEMA / S10 / BLAZER	2.0L / 2.2L	4	GASOLINA	ADM	RA 1042	104,20	43,00	7,01	STD	44	E
	CARBURADO		ALCOOL	ESC	RE 1043	104,20	36,50	6,99	STD	44	E
C10 / C14 / C16 / C60 / CHEVROLET BRASIL (1964 ATÉ 1981)	261 - 4.3L	4	GASOLINA	ADM	RA 1086	162,21	47,62	8,67	STD	30	J
			ALCOOL	ESC	RE 1027	125,03	38,10	8,66	STD	45	J
MONZA	1.6L	4	GASOLINA	ADM	RA 1070	106,10	35,00	7,98	STD	44	E
			ALCOOL	ESC	RE 1071	106,10	32,00	7,96	STD	44	E
MONZA / OMEGA / KADETT / ASTRA SW / SUPREMA /	1.8L / 2.0L - FASE II	4	GASOLINA	ADM	RA 1104	104,20	42,00	7,01	STD	44	E
IPANEMA / VECTRA	CARBURADO / INJEÇÃO		ALCOOL	ESC	RE 1043	104,20	36,50	6,99	STD	44	E
CORSA	1.0L / 1.4L - 8V	4	GASOLINA	ADM	RA 1111	104,60	33,00	7,01	STD	44	E
	EFI - INJEÇÃO			ESC	RE 1112	104,60	29,00	6,99	STD	44	E
CORSA/ MERIVA / TIGRA / MONTANA	1.8L - 8V - MPFI	4	GASOLINA	ADM	RA 1113	101,50	38,00	7,01	STD	44	E
				ESC	RE 1114	101,50	31,00	6,99	STD	44	E
CORSA / TIGRA	1.4L / 1.6L - 16V	4	GASOLINA	ADM	RA 1124	103,12	31,00	5,96	STD	45	C
				ESC	RE 1125	102,22	27,50	5,94	STD	45	C
CORSA	1.0L - 16V	4	GASOLINA	ADM	RA 1137	104,00	25,00	5,96	STD	45	C
				ESC	RE 1138	103,20	20,00	5,94	STD	45	C
ASTRA / VECTRA / CALIBRA (1997...)	1.8L / 2.0L / 2.4L - 16V	4	GASOLINA	ADM	RA 1158	102,10	32,00	5,96	STD	45	C
	MPFI			ESC	RE 1159	92,25	29,00	5,95	STD	45	C
NOVO CORSA / MERIVA / MONTANA (ATÉ 2005)	1.8L - 8V	4	GASOLINA	ADM	RA 1258	101,50	38,00	7,01	STD	44	E
	(POWERTRAIN)		FLEX	ESC	RE 1259	101,50	31,00	6,99	STD	44	E
MERIVA	1.8L - 16V	4	GASOLINA	ADM	RA 1273	101,45	31,30	5,96	STD	45	C
	DOHC (2003...)		FLEX	ESC	RE 1274	100,75	27,50	5,94	STD	45	C
CELTA / CORSA CLASSIC (2002 ATÉ 2009)	1.0 - 8V (70 / 71CV)	4	GASOLINA	ADM	RA 1289	104,95	33,00	7,01	STD	44	E
NOVO CORSA (2002 ATÉ 2005)			ALCOOL	ESC	RE 1290	105,00	29,00	6,99	STD	44	E

# VÁLVULAS - CATÁLOGO DE APLICAÇÕES / VALVES - APPLICATIONS CATALOG

CARRO DE PASSAGEIRO / COMERCIAIS / CAMINHÕES / ÔNIBUS / MÁQUINAS AGRÍCOLAS / MOTOCICLETAS / ESPECIAIS / COMPETIÇÃO  
 CARS / COMMERCIALS / TRUCKS / BUSES / AGRICULTURAL MACHINES / MOTORCYCLES / SPECIALS / COMPETITION

MODELOS	MOTORES	CIL.	COMB.	FUNÇÃO	N° RIC	C. TOTAL	Ø CABEÇA	Ø HASTE	HASTE	ÂNGULO	PTA
MODELS	ENGINES	CYL.	FUEL	FUNCTION	RIC P/N	TOTAL LENGTH	Ø HEAD	Ø STEM	STEM	ANGLE	TIP

## GENERAL MOTORS

suitable for

CELTA / CORSA / COBALT / SPIN / MONTANA /	1.0L - 8V SOHC (2006...)	4	FLEX	ADM	RA 1301	104,70	33,00	5,96	STD	44	C	
	NOVO PRISMA / CLASSIC / CELTA			4L 1.0L 16V	ESC	RE 1302	104,75	29,00	5,94	STD	44	C
	ONIX			4L 1.0L 8V								
NOVO CORSA / MERIVA / MONTANA (2006...)	1.8L - 8V	4	FLEX	ADM	RA 1303	101,65	38,00	5,96	STD	44	C	
				ESC	RE 1304	101,55	31,00	5,94	STD	44	C	
NOVO CORSA (2007...) / CELTA / PRISMA / MERIVA / COBALT / MONTANA / AGILE / ONIX (SET. 2008...)	1. 4L - 8V VHC-E	4	FLEX	ADM	RA 1305	105,05	38,00	5,96	STD	44	C	
				ESC	RE 1306	105,05	31,00	5,94	STD	44	C	
ASTRA / VECTRA / ZAFIRA (2009...)	2.0L / 1.6L - 8V	4	GASOLINA	ADM	RA 1371	104,20	41,80	7,01	STD	44	C	
	COM REBAIXO NA PONTA		ALCOOL	ESC	RE 1372	104,00	36,50	6,99	STD	44	C	
CRUZE (2011...)	ECOTEC 6 (1.8L- 16V) N18XFF	4	FLEX	ADM	RA 1432	102,38	31,35	4,97	STD	45	C	
				ESC	RE 1433	101,80	27,60	4,96	STD	45	C	
S10 TURBO DURAMAX / TRAIL BLAZER	2.8L - 16V	4	DIESEL	ADM	RA 2481	107,65	31,00	5,97	STD	45	C	
				ESC	RE 2482	107,85	29,30	5,96	STD	45	C	
BLAZER / S10	MOTOR VORTEC 4.3L - 12 V - 6 CILINDROS	6	GASOLINA	ADM	RA 1483	124,10	49,30	8,67	STD	45	A	
				ESC	RE 1484	125,10	38,00	8,66	STD	45	A	
CORSA	1. 4L - 8V EFI OHC (1994 ATÉ 1996)	4	FLEX	ADM	RA 1498	104,65	38,00	7,00	STD	45	A	
				ESC	RE 1499	104,85	31,00	6,98	STD	45	A	
CRUZE / TRACKER	1. 4L - 16V (2017 Á 2022) ECOTEC TURBO SIDI	4	FLEX	ADM	RA 1505	106,65	27,85	4,97	STD	45	C	
				ESC	RE 1506	105,65	23,00	4,96	STD	45	C	
CRUZE / TRACKER	1.0L - 12V (2019 Á 2022) (TURBO / ASPIRADO)	3	FLEX	ADM	RA 1518	94,00	30,25	4,97	STD	44	C	
				ESC	RE 1519	101,90	24,25	4,96	STD	44	C	
				ESC	RE 1520	101,90	24,25	4,96	STD	44	C	

## HONDA

CIVIC (2001...)	1.6L / 1.7L 16V (V-TEC / V-TEC-E)	4	GASOLINA	ADM	RA 1347	118,55	30,00	5,48	STD	45	A
				ESC	RE 1348	115,95	26,00	5,45	STD	45	A
FIT	1, 4L - 8V	4	GASOLINA	ADM	RA 1389	118,25	32,00	5,48	STD	45	A
				ESC	RE 1390	118,15	27,90	5,46	STD	45	A
CITY / NEW FIT (2005...)	1,5L - 16V	4	FLEX	ADM	RA 1402	118,65	27,50	5,48	STD	45	E
	VTEC			ESC	RE 1403	117,65	23,00	5,46	STD	45	E
NEW CIVIC	R18A1 - 1,8L - 16V	4	FLEX	ADM	RA 1448	116,75	32,00	5,48	STD	45	A
				ESC	RE 1348	115,95	26,00	5,45	STD	45	A
CIVIC CVR	R20Z5 4 (2.0 - 16V) 2014 EM DIANTE	4	FLEX	ADM	RA 1502	117,80	33,00	5,48	STD	45	A
				ESC	RE 1348	115,95	26,00	5,45	STD	45	A

## HYUNDAI

H100 (1998 ATÉ 2004) / H1 (1999 ATÉ 2000) / PORTER (2000 ATÉ 2003)	2.5L	4	DIESEL	ADM	RA 2309	132,00	42,00	7,97	STD	45	A
				ESC	RE 2310	132,00	36,00	7,95	STD	45	A

# VÁLVULAS - CATÁLOGO DE APLICAÇÕES / VALVES - APPLICATIONS CATALOG

CARRO DE PASSAGEIRO / COMERCIAIS / CAMINHÕES / ÔNIBUS / MÁQUINAS AGRÍCOLAS / MOTOCICLETAS / ESPECIAIS / COMPETIÇÃO  
 CARS / COMMERCIALS / TRUCKS / BUSES / AGRICULTURAL MACHINES / MOTORCYCLES / SPECIALS / COMPETITION

MODELOS	MOTORES	CIL.	COMB.	FUNÇÃO	N° RIC	C. TOTAL	Ø CABEÇA	Ø HASTE	HASTE	ÂNGULO	PTA
MODELS	ENGINES	CYL.	FUEL	FUNCTION	RIC P/N	TOTAL LENGTH	Ø HEAD	Ø STEM	STEM	ANGLE	TIP
<b>HYUNDAI</b>											
H100 / TERRACAM/ GALLOPER	2.5L	4	DIESEL	ADM	RA 2373	130,20	40,00	7,97	STD	45	A
HR (2008- 2013)	D4BH			ESC	RE 2374	129,90	34,00	7,94	STD	45	A
I30 / TUCSON / ( 2005...)	2.0L - 16V	4	GASOLINA	ADM	RA 1406	114,30	32,00	5,97	STD	45	A
	G4GC BETA II			ESC	RE 1407	116,70	27,50	5,96	STD	45	A
HB 20	1.0L 12V	3	FLEX	ADM	RA 1426	92,85	26,90	5,48	STD	45	A
				ESC	RE 1427	93,42	24,15	5,46	STD	45	A
HYUNDAI HR ( 2014 ...)	2500 D4 CB 16V	4	DIESEL	ADM	RA 2430	110,57	31,90	6,97	STD	45	C
				ESC	RE 2431	110,55	28,00	6,95	STD	45	C
VELOSTER / HB20	1.6L - 16V	4	GASOLINA	ADM	RA 1446	93,20	31,55	5,47	STD	45	A
			FLEX	ESC	RE 1447	92,60	26,00	5,46	STD	45	A
CRETA / ELANTRA / I30 / X35 / TUCSON	G4NB / F4NA 1.8L / 2.0L - 16V	4	GASOLINA	ADM	RA 1509	102,35	33,00	5,48	STD	45	A
				ESC	RE 1510	104,30	27,00	5,46	STD	45	A
ACCENT (1995 À 2000)	1.3L / 1.5L - 12V	4	GASOLINA	ADM	RA 1516	99,20	27,45	5,96	STD	45	A
				ESC	RE 1517	98,60	32,00	5,95	STD	45	A
<b>KIA</b>											
BESTA (1993 ATÉ 1998)	2.7L	4	DIESEL	ADM	RA 2117	114,40	41,10	8,97	STD	45	E
				ESC	RE 2118	114,50	35,00	8,95	STD	30	E
BESTA (1993 ATÉ 1998) / SPORTAGE (1994 ATÉ 1998)	2.0L / 2.2L	4	DIESEL	ADM	RA 2119	107,95	41,15	7,98	STD	45	A
				ESC	RE 2120	107,52	36,00	7,98	STD	45	A
BESTA GS (1997 ATÉ 2001) / BONGO K2700 (ATÉ 2009)	2.7L	4	DIESEL	ADM	RA 2250	112,90	44,00	8,47	STD	45	A
BESTA GS (2000 ATÉ 2005)	3.0L			ESC	RE 2251	112,80	37,50	8,45	STD	45	A
SPORTAGE ( 2005...)	2.0L - 16V G4GC BETA II	4	GASOLINA	ADM	RA 1406	114,30	32,00	5,97	STD	45	A
				ESC	RE 1407	116,70	27,50	5,96	STD	45	A
KIA PICANTO	1.0L 12V	3	FLEX	ADM	RA 1426	92,85	26,90	5,48	STD	45	A
				ESC	RE 1427	93,42	24,15	5,46	STD	45	A
BONGO	K2500 2.5 D 12> MOTOR D4 CB	4	DIESEL	ADM	RA 2430	110,57	31,90	6,97	STD	45	C
				ESC	RE 2431	110,55	28,00	6,95	STD	45	C
KIA CERATO / SOUL	1.6L - 16V	4	FLEX	ADM	RA 1446	93,20	31,55	5,47	STD	45	A
				ESC	RE 1447	92,60	26,00	5,46	STD	45	A
SPORTAGE / CARENS / CERATO	G4NB / F4NA 1.8L / 2.0L - 16V	4	GASOLINA	ADM	RA 1509	102,35	33,00	5,48	STD	45	A
				ESC	RE 1510	104,30	27,00	5,46	STD	45	A
<b>MAXION / PERKINS</b>											
CASE / FORD / GM / MASSEY FERGUNSON	6.357 II - PERKINS	6	DIESEL	ADM	RA 2004	132,36	46,89	9,49	STD	45	A
				ESC	RE 2005	132,36	40,54	9,45	STD	45	A
MASSEY FERGUNSON	3.152 II / 4.203 II - PERKINS	3/4	DIESEL	ADM	RA 2006	114,29	38,96	7,91	STD	45	A
				ESC	RE 2007	114,29	33,40	7,91	STD	45	A

suitable for

# VÁLVULAS - CATÁLOGO DE APLICAÇÕES / VALVES - APPLICATIONS CATALOG

CARRO DE PASSAGEIRO / COMERCIAIS / CAMINHÕES / ÔNIBUS / MÁQUINAS AGRÍCOLAS / MOTOCICLETAS / ESPECIAIS / COMPETIÇÃO  
 CARS / COMMERCIALS / TRUCKS / BUSES / AGRICULTURAL MACHINES / MOTORCYCLES / SPECIALS / COMPETITION

MODELOS	MOTORES	CIL.	COMB.	FUNÇÃO	N° RIC	C. TOTAL	Ø CABEÇA	Ø HASTE	HASTE	ÂNGULO	PTA
MODELS	ENGINES	CYL.	FUEL	FUNCTION	RIC P/N	TOTAL LENGTH	Ø HEAD	Ø STEM	STEM	ANGLE	TIP
<b>MAXION / PERKINS</b>											
CASE / MASSEY FERGUNSON	3.152 ID / 4.203 ID - PERKINS	3/4	DIESEL	ADM	RA 2012	114,29	38,96	7,91	STD	45	A
				ESC	RE 2013	114,29	33,40	7,91	STD	45	A
CASE / GM / MASSEY FERGUNSON	4.236 ID / 4.248 ID / 6.354 ID - PERKINS	3/4/6	DIESEL	ADM	RA 2022	122,92	44,28	9,47	STD	45	A
				ESC	RE 2023	123,32	36,57	9,46	STD	45	A
CASE / FORD / GM / MASSEY FERGUNSON	6.358 ID - PERKINS	6	DIESEL	ADM	RA 2072	139,50	45,24	9,47	STD	45	A
				ESC	RE 2073	139,82	38,89	9,46	STD	45	A
GM / VW / MASSEY FERGUNSON	Q20B4.236 / Q20B6.354 - PERKINS	4/6	DIESEL	ADM	RA 2078	122,91	44,22	9,47	STD	45	C
				ESC	RE 2079	123,31	36,57	9,46	STD	45	C
GM	S4 (ASPIRADO) - MAXION	4	DIESEL	ADM	RA 2128	122,72	44,22	9,48	STD	45	C
				ESC	RE 2130	123,12	38,20	9,46	STD	45	C
GM	S4 / S4T / S4T PLUS (TURBO) - MAXION	4	DIESEL	ADM	RA 2129	122,57	44,22	9,47	STD	30	C
				ESC	RE 2130	123,12	38,20	9,46	STD	45	C
MBB	GEMINI HS/HST 2.5L (TURBO)	4	DIESEL	ADM	RA 2162	116,35	38,92	7,97	STD	30	C
				ESC	RE 2163	116,51	36,50	7,95	STD	45	C
<b>MAZDA</b>											
HYSTER/ YALE	FE 2.0L	4	GASOLINA	ADM	RA 1438	111,90	44,00	8,03	STD	30	A
				ESC	RE 1439	111,70	36,00	8,02	STD	30	A
<b>MERCEDES BENZ - FREIO MOTOR TOP BRAKE</b>											
CAMINHÕES - ÔNIBUS: 721C / 914C	OM 447 LA / 449 LA / 457 BR 458 ELETRÔNICO	6	DIESEL	FREIO-MOTOR	RAE 6003	90,40	17,00	7,99	STD	45	E
CAMINHÕES - ÔNIBUS	OM457 LA - LS1938 / 1938S / 0-500	5/6	DIESEL	FREIO-MOTOR	RAE 6004	86,90	17,00	7,99	STD	45	E
CAMINHÕES - ÔNIBUS: 721C / 914C	OM 904 / 906 / 924 / 926 - 712C / 914C	6	DIESEL	FREIO-MOTOR	RAE 6018	81,60	15,20	5,97	STD	20	A
<b>MERCEDES BENZ</b>											
CAMINHÕES: 1418 / 1419 / 1420 / 1517 / 1518 / 1519 / 1929 / 1624 / 1923 / 1924 / 2024 / 2219 / 2224 / 2623 / 2624	OM-355 (ASPIRADO)	5/6	DIESEL	ADM	RA 3020	129,80	42,00	8,94	STD	45	I
	OM 346 / 355.5 / 355.6 (ASPIRADO)			ESC	RE 3021	165,30	37,00	8,93	STD	45	I
CAMINHÕES: 608/ 708 / 1013 / 1017 / 1113 / 1313 / 1413 / 1417 / 1513 / 1613 / 1617 / 2013 / 2213	OM-314 / OM-352 (ASPIRADO)	4/6	DIESEL	ADM	RA 2024	140,50	44,00	8,94	STD	45	I
	OM-314A / OM-352A (TURBO)			ESC	RE 2025	140,50	36,00	9,93	STD	45	I
CAMINHÕES: L312 / 1111	OM-312 / OM-321 / OM-322/ OM-324 (ASPIRADO)	4/6	DIESEL	ADM	RA 2044	140,50	40,00	8,94	STD	45	I
				ESC	RE 2045	140,50	36,00	8,93	STD	45	I
CAMINHÕES: LP-326 / LP-331	OM-332 / OM-326 (ASPIRADO)	6	DIESEL	ADM	RA 3054	130,00	37,00	8,94	STD	45	I
				ESC	RE 3055	165,50	32,00	8,93	STD	45	I

suitable for

# VÁLVULAS - CATÁLOGO DE APLICAÇÕES / VALVES - APPLICATIONS CATALOG

CARRO DE PASSAGEIRO / COMERCIAIS / CAMINHÕES / ÔNIBUS / MÁQUINAS AGRÍCOLAS / MOTOCICLETAS / ESPECIAIS / COMPETIÇÃO  
 CARS / COMMERCIALS / TRUCKS / BUSES / AGRICULTURAL MACHINES / MOTORCYCLES / SPECIALS / COMPETITION

MODELOS	MOTORES	CIL.	COMB.	FUNÇÃO	N° RIC	C. TOTAL	Ø CABEÇA	Ø HASTE	HASTE	ÂNGULO	PTA
MODELS	ENGINES	CYL.	FUEL	FUNCTION	RIC P/N	TOTAL LENGTH	Ø HEAD	Ø STEM	STEM	ANGLE	TIP
<b>MERCEDES BENZ</b>											
CAMINHÕES: 1933 / 1934	OM-355.5A (TURBO)	5/6	DIESEL	ADM	RA 3062	130,00	42,00	8,94	STD	30	I
	OM-355.6A (TURBO + INTERCOOLER)			ESC	RE 3063	165,10	37,00	8,93	STD	30	I
CAMINHÃO: 1932	OM-355.6A (TURBO)	6	DIESEL	ADM	RA 3064	130,60	42,00	8,94	STD	30	I
				ESC	RE 3065	165,90	37,00	8,93	STD	30	I
CAMINHÕES: 812 / 912 / 1218 / 1318 / 1418 / 1618	OM-364A / OM-364LA / OM-366A / OM-366LA	4/6	DIESEL	ADM	RA 2080	140,50	42,00	8,94	STD	30	I
	OM 352A			ESC	RE 2081	140,56	36,00	9,93	STD	45	I
CAMINHÕES: 709 / 1115 / 1214 / 1315 / 1414 / 1614	OM-364 / OM-366 (ASPIRADO)	4/6	DIESEL	ADM	RA 2082	140,50	42,80	8,94	STD	30	I
				ESC	RE 2083	140,50	36,00	9,93	STD	45	I
CAMINHÕES: OF-1620 / 1621 - OF1318 / LK-1621 / O-371	OM - 364LA / 366LA	4/ 6	DIESEL	ADM	RA 2131	140,50	42,00	8,94	STD	20	I
	(TURBO + INERCOOLER) EURO II			ESC	RE 2132	140,56	36,00	9,93	STD	45	I
COMERCIAIS / VANS: SPRINTER / HS-310D (1997 ATÉ 1998) / HS-312D (1999 ATÉ 2001)	GEMINI HS / HST - 2.5L (TURBO)	4	DIESEL	ADM	RA 2162	116,35	38,92	7,97	STD	30	C
	MAXION			ESC	RE 2163	116,51	36,50	7,95	STD	45	C
CAMINHÕES / ÔNIBUS	OM 447 - OM 449 A / LA	5/6	DIESEL	ADM	RA 3236	142,50	58,90	11,94	STD	30	I
	(ASPIRADO / TURBO)			ESC	RE 3237	142,50	51,00	11,93	STD	45	I
SPRINTER CDI	OM 611 - 16V	4	DIESEL	ADM	RA 2375	104,05	30,20	6,96	STD	45	A
				ESC	RE 2376	104,40	28,50	6,96	STD	45	A
CLASSE A 160 (1999...)	1.6L - 8V (50HC)	4	GASOLINA	ADM	RA 1420	103,15	40,00	5,95	STD	45	A
				ESC	RE 1421	102,73	34,00	6,96	STD	45	A
MBB	OM 457 LA / OM 460 LA	6	DIESEL	ADM	RA 3487	145,00	45,60	8,94	STD	30	I
				ESC	RE 3488	145,00	41,10	8,93	STD	45	I
SPRINTER / COMPASS	SPRINTER / COMPASS	6	DIESEL	ADM	RA 2489	108,95	28,65	5,97	STD	45	C
				ESC	RE 2490	109,10	24,65	5,96	STD	45	C

## MITSUBISHI

L200 / L300	2.3L	4	DIESEL	ADM	RA 2269	136,50	40,00	7,97	STD	45	A
PAJERO D/ GALANT (1984 ATÉ 1999)	4D55 / 4D56			ESC	RE 2270	136,30	34,00	7,95	STD	45	A
L200 / L300	2.5L	4	DIESEL	ADM	RA 2373	130,20	40,00	7,96	STD	45	A
	D4BH / 4D56 / 4D56T			ESC	RE 2374	129,90	34,00	7,94	STD	45	A
PAJERO TR4 / LANCER / SPACE WAGON / PRÖTON	1.6L / 1.8L / 2.0L - 16V	4	GASOLINA	ADM	RA 1418	110,10	30,20	5,96	STD	45	A
	4G92 / 4G93 / 4G94		FLEX	ESC	RE 1419	113,87	26,90	5,95	STD	45	A
PAJERO FULL / L200 TRITON (2008 ATÉ 2016)	4M41 3.2L 16V	4	DIESEL	ADM	RA 2485	115,65	33,00	6,58	STD	45	A
				ESC	RE 2486	115,40	31,00	6,55	STD	45	A

suitable for

# VÁLVULAS - CATÁLOGO DE APLICAÇÕES / VALVES - APPLICATIONS CATALOG

CARRO DE PASSAGEIRO / COMERCIAIS / CAMINHÕES / ÔNIBUS / MÁQUINAS AGRÍCOLAS / MOTOCICLETAS / ESPECIAIS / COMPETIÇÃO  
CARS / COMMERCIALS / TRUCKS / BUSES / AGRICULTURAL MACHINES / MOTORCYCLES / SPECIALS / COMPETITION

MODELOS	MOTORES	CIL.	COMB.	FUNÇÃO	N° RIC	C. TOTAL	Ø CABEÇA	Ø HASTE	HASTE	ÂNGULO	PTA
MODELS	ENGINES	CYL.	FUEL	FUNCTION	RIC P/N	TOTAL LENGTH	Ø HEAD	Ø STEM	STEM	ANGLE	TIP
<b>MITSUBISHI</b>											
L200 TRITON	4N15 - 2. 4L - 16V	4	DIESEL	ADM	RA 2507	121,65	30,50	5,98	STD	45	C
				ESC	RE 2508	113,00	26,00	5,97	STD	45	C

## MWM

AGRALE / FIAT ALLIS / FORD / MASSEY FERGUNSON / VALMET / VW	D-225 / D-226 / D-229 / D-237	2/3/ 4/6	DIESEL	ADM	RA 2018	117,00	41,00	8,96	STD	45	C
	(ASPIRADO)			ESC	RE 2019	117,00	38,00	8,96	STD	45	C
VALMET	KH-112 / D222	1/2/ 3/4	DIESEL	ADM	RA 2046	128,99	41,00	9,96	STD	45	D
				ESC	RE 2047	129,00	37,00	9,95	STD	45	D
FIAT ALLIS / FORD / VALMET / VW	TD-229EC-4 / TD-229EC-6	4/6	DIESEL	ADM	RA 2076	117,02	42,00	8,96	STD	30	C
	(TURBO)			ESC	RE 2077	116,87	38,00	8,96	STD	45	C
SÉRIE X10	3.10 / 4.10 / 6.10 (ASPIRADO)	4/6	DIESEL	ADM	RA 2133	126,00	45,00	8,96	STD	30	C
	3.10T / 4.10T / 6.10T (TURBO) - 6.10TCA (TURBO + AFTERC.)			ESC	RE 2134	126,00	41,00	8,96	STD	45	C
GM - SPRINT	4.07T / 4.07TCA	4/6	DIESEL	ADM	RA 2160	105,15	33,00	6,96	STD	30	C
	6.07T / 6.07TCA			ESC	RE 2161	105,15	40,00	6,96	STD	45	C

## NISSAN

FRONTIER / X TRAIL (2006...)	2.5L - 16V	4	DIESEL	ADM	RA 2396	106,75	28,00	5,97	STD	45	A
	ID25-DDT			ESC	RE 2397	106,20	26,00	5,96	STD	45	A
TIIDA / GRAN LIVINA / LIVINA	1.8L - 16V MR 18DE	4	GASOLINA	ADM	RA1408	106,40	33,90	5,47	STD	45	A
SENTRA	2.0L 16V MR20		FLEX	ESC	RE1409	105,10	27,70	5,45	STD	45	A
MARCH / VERSA	HR-16 DE L4 1.6L - 16V	4	FLEX	ADM	RA 1456	101,95	31,25	4,99	STD	45	A
				ESC	RE 1457	102,65	25,50	4,98	STD	45	A

## PEUGEOT

206	1.0L - 16V (RENAULT)	4	GASOLINA	ADM	RA 1210	110,65	26,00	5,46	STD	45	C
	DOHC			ESC	RE 1211	112,40	22,00	5,45	STD	45	C
106 / 205 / 405 - XL / GL	TU1JP 1.1L - 8V / TU3JP - 1.3L - 8V	4	GASOLINA	ADM	RA 1281	112,90	36,70	6,98	STD	30	A
	TU5JP - 1.5L - 8V			ESC	RE 1282	112,65	29,20	6,97	STD	45	A
206 / 307	TU5JP4 1.6L - 16V	4	GASOLINA	ADM	RA 1283	103,80	31,30	5,97	STD	45	A
				ESC	RE 1284	104,40	24,50	5,96	STD	45	A
405 / 406 / 605	XU7JP4 - 1.8L - 16V	4	GASOLINA	ADM	RA 1285	106,40	34,60	5,97	STD	45	A
				ESC	RE 1286	105,80	29,60	5,96	STD	45	A
307 / 406 / 407 / 806 / 807	2.0L - 16V (EW10)	4	GASOLINA	ADM	RA 1287	106,20	33,30	5,97	STD	45	A
				ESC	RE 1288	103,70	29,00	5,96	STD	45	A

# VÁLVULAS - CATÁLOGO DE APLICAÇÕES / VALVES - APPLICATIONS CATALOG

CARRO DE PASSAGEIRO / COMERCIAIS / CAMINHÕES / ÔNIBUS / MÁQUINAS AGRÍCOLAS / MOTOCICLETAS / ESPECIAIS / COMPETIÇÃO  
 CARS / COMMERCIALS / TRUCKS / BUSES / AGRICULTURAL MACHINES / MOTORCYCLES / SPECIALS / COMPETITION

MODELOS	MOTORES	CIL.	COMB.	FUNÇÃO	N° RIC	C. TOTAL	Ø CABEÇA	Ø HASTE	HASTE	ÂNGULO	PTA
MODELS	ENGINES	CYL.	FUEL	FUNCTION	RIC P/N	TOTAL LENGTH	Ø HEAD	Ø STEM	STEM	ANGLE	TIP
<b>PEUGEOT</b>											
306 / 406 / PARTNER	XU7JP 1.8L - 8V	4	GASOLINA	ADM	RA 1311	108,55	41,50	7,96	STD	45	A
				ESC	RE 1312	108,40	34,50	7,95	STD	45	A
206 / 207	1.4L - 8V TU3JP	4	FLEX	ADM	RA 1314	112,80	36,73	6,98	STD	45	A
				ESC	RE 1282	112,65	29,20	6,97	STD	45	A
206 / 306 / 405 / PARTNER	1.9L	4	DIESEL	ADM	RA 2381	112,40	38,50	7,99	STD	45	A
	DW8			ESC	RE 2382	111,85	33,00	7,98	STD	45	A
208	TU4 - 1.5L 8V	4	FLEX	ADM	RA 1410	112,40	37,70	5,98	STD	45	A
206 / 207 COMPACT / PARTNER	TU4 - 1.4L			ESC	RE 1411	112,50	30,20	5,97	STD	45	A
206 / 207 / 307	ET3J4 1.4L - 16V	4	FLEX	ADM	RA 1458	100,80	28,30	5,49	STD	45	C
				ESC	RE 1459	101,20	24,50	5,47	STD	45	C
BOXER / 406 HDI	DW10 2.0L HDI	4	DIESEL	ADM	RA 2512	107,20	35,60	5,98	STD	45	C
				ESC	RE 2513	107,25	33,85	5,97	STD	45	C
PEUGEOT 306	TU5JP 1.6L 8V	4	GASOLINA	ADM	RA 1523	111,50	39,40	6,98	STD	45	C
				ESC	RE 1524	111,50	31,30	6,97	STD	45	C
<b>RENAULT</b>											
CLIO / TWINGO (1999...)	D7F - 1.0L / 1.2L - 8V	4	GASOLINA	ADM	RA 1208	106,90	32,90	5,97	STD	30	A
				ESC	RE 1209	106,80	29,90	5,96	STD	45	A
CLIO / LOGAN / KANGOO / TWINGO / SANDERO	1.0L - 16V DOHC	4	GASOLINA	ADM	RA 1210	110,65	26,00	5,46	STD	45	C
	D4D			ESC	RE 1211	112,40	22,00	5,45	STD	45	C
CLIO II / SCENIC / MEGANE / KANGOO	K4M 1.6L-16V	4	GASOLINA	ADM	RA 1212	109,50	32,70	5,47	STD	45	A
				ESC	RE 1213	107,60	28,00	5,46	STD	45	A
SCENIC / LAGUNA / MEGANE	2.0L - 16V	4	GASOLINA	ADM	RA 1267	110,10	33,50	5,47	STD	45	A
	F4R (2004 - 10)			ESC	RE 1268	108,90	29,00	5,44	STD	45	A
TRAFFIC	2.1L - 8V	4	DIESEL	ADM	RA 2279	111,60	40,35	7,99	STD	45	A
				ESC	RE 2280	111,60	33,25	7,97	STD	45	A
TRAFFIC	2.0L - 8V	4	GASOLINA	ADM	RA 1317	112,15	43,90	7,99	STD	30	A
				ESC	RE 1318	111,50	38,60	7,96	STD	45	A
CLIO / R9 / R19 (1985...)	1.6L - 8V	4	GASOLINA	ADM	RA 1359	90,70	34,00	6,97	STD	45	B
	C3L			ESC	RE 1360	89,10	28,90	6,96	STD	45	B
LAGUNA / R19RT / MEGANE (1998 À 2000)	1.8L / 2.0L - 8V	4	GASOLINA	ADM	RA 1369	115,50	40,00	7,98	STD	45	A
	F3P - F3R			ESC	RE 1370	115,40	32,70	7,96	STD	45	A
MASTER / TRAFFIC II / LAGUNA / LAGUNA GRAND TOUR	2.2L / 2.5L - 16V	4	DIESEL	ADM	RA 2377	123,20	30,75	5,98	STD	45	C
	2.5L DCI - 16V			ESC	RE 2378	123,10	29,60	5,97	STD	45	C
R19 / CLIO / EXPRESS / MEGANE / KANGOO	1.9L	4	DIESEL	ADM	RA 2379	110,05	35,10	7,99	STD	45	A
	F8Q			ESC	RE 2380	110,05	31,50	7,97	STD	45	A
CLIO ENERGY / SYMBOL / SANDERO /	1.4L - 8V E7J / 1.6L - 8V K7M	4	GASOLINA	ADM	RA 1387	108,20	37,50	6,96	STD	30	A
LOGAN / MEGANE / KANGOO			ALCOOL	ESC	RE 1388	107,80	33,60	6,95	STD	45	A

# VÁLVULAS - CATÁLOGO DE APLICAÇÕES / VALVES - APPLICATIONS CATALOG

CARRO DE PASSAGEIRO / COMERCIAIS / CAMINHÕES / ÔNIBUS / MÁQUINAS AGRÍCOLAS / MOTOCICLETAS / ESPECIAIS / COMPETIÇÃO  
 CARS / COMMERCIALS / TRUCKS / BUSES / AGRICULTURAL MACHINES / MOTORCYCLES / SPECIALS / COMPETITION

MODELOS	MOTORES	CIL.	COMB.	FUNÇÃO	N° RIC	C. TOTAL	Ø CABEÇA	Ø HASTE	HASTE	ÂNGULO	PTA
MODELS	ENGINES	CYL.	FUEL	FUNCTION	RIC P/N	TOTAL LENGTH	Ø HEAD	Ø STEM	STEM	ANGLE	TIP

## RENAULT

suitable for

MASTER (2013...)	2.3L 16V	4	DIESEL	ADM	RA 2442	104,00	27,70	5,97	STD	45	C
				ESC	RE 2443	103,80	26,00	5,97	STD	45	C
DUSTER/ SANDERO NOVO	F4R 2.0L- 16V	4	FLEX	ADM	RA 1444	110,60	34,00	5,48	STD	45	A
				ESC	RE 1445	109,00	29,00	5,97	STD	45	C
SANDERO / LOGAN	1.0L - 12V - B4D	3	FLEX	ADM	RA 1475	93,45	28,00	4,98	STD	45	C
				ESCO	RE 1476	95,90	23,90	4,97	STD	30	C
SANDERO / LOGAN / DUSTER / CAPTUR	(SCE / H4M) 1.6L - 16V	4	FLEX	ADM	RA 1479	101,85	31,80	4,98	STD	45	A
				ESC	RE 1497	102,50	25,50	4,97	STD	45	A
				ESC	RE 1480	102,60	25,50	4,97	STD	45	C
KWID	1.0L - 12V	3	FLEX	ADM	RA 1500	94,70	27,00	4,98	STD	45	C
				ESC	RE 1501	97,50	22,50	4,97	STD	45	C

## TOYOTA

HILUX ( 1998...)	2.0L / 3.0L	4	DIESEL	ADM	RA 2315	103,50	42,50	7,97	STD	45	A
	1HZ 2.4L			ESC	RE 2316	103,60	36,00	7,96	STD	45	A
COROLLA (1998 ATÉ 2001) MODELO ANTIGO	1.6L / 1.8L - 16V	4	GASOLINA	ADM	RA 1349	87,60	31,00	5,98	STD	45	A
				ESC	RE 1350	87,90	24,50	5,97	STD	45	A
COROLLA (2003 a 2007)	1.8L - 16V	4	GASOLINA	ADM	RA 1353	88,60	32,00	5,48	STD	45	A
	1ZZFE / 3ZZFE			ESC	RE 1354	88,60	27,50	5,47	STD	45	A
HILUX (2005...)	1KDTFTV 3.0L - 16V	4	DIESEL	ADM	RA 2355	105,50	32,20	5,98	STD	45	A
				ESC	RE 2356	105,35	27,80	5,97	STD	45	A
TOYOTA ETIOS	1.3L e 1.5 - 16 V	4	FLEX	ADM	RA 1428	88,45	28,95	5,48	STD	45	A
				ESC	RE 1429	89,26	24,25	5,47	STD	45	A
COROLLA (2007...)	1.8L - 16V	4	GASOLINA	ADM	RA 1440	109,50	32,00	5,48	STD	45	A
			FLEX	ESC	RE 1441	108,30	27,50	5,47	STD	45	A

## VALTRA

SÉRIE 20	(MOTOR: 320D / 320DS / 420DR / 420DSR)	4	DIESEL	ADM	RA 3462	151,85	48,00	8,98	STD	27,50	A
				ESC	RE 3463	152,90	41,00	8,94	STD	45	A

## VOLKSWAGEN

KOMBI / SEDAN / GOL / BRASILIA	1300 CC AR	4	GASOLINA	ADM	RA 1008	111,77	33,00	7,95	STD	44	C
			ALCOOL	ESC	RE 1009	111,80	29,90	7,92	STD	45	C
KOMBI / SEDAN / GOL / BRASILIA / VARIANT / KARMAN GUIA	1500 / 1600 CC AR	4	GASOLINA	ADM	RA 1010	111,83	35,50	7,94	STD	45	C
			ALCOOL	ESC	RE 1011	111,80	31,90	7,93	STD	45	C
KOMBI / PICK- UP / SEDAN	1600 CC AR	4	GASOLINA	ADM	RA 1010	111,83	35,50	7,94	STD	45	C
			ALCOOL	ESC	RE 1121	111,80	29,90	8,91	STD	45	C
GOL / PASSAT / VOYAGE / PARATI / SAVEIRO / SANTANA ( ATÉ MARÇO 1984 )	1500 / 1600CC ÁGUA	4	GASOLINA	ADM	RA 1014	98,70	33,85	7,96	STD	45	A
	(CARBURADO) ( 01 CANALETA )		ALCOOL	ESC	RE 1015	98,44	31,15	7,94	STD	45	A
GOL / PASSAT / VOYAGE / PARATI / SAVEIRO / SANTANA ( ABRIL 1984 ATÉ ABRIL 1985 )	1600 CC ÁGUA	4	GASOLINA	ADM	RA 1030	98,65	33,95	7,96	STD	45	C
	(CARBURADO) (03 CANALETAS)		ALCOOL	ESC	RE 1031	98,45	31,15	7,94	STD	45	C

# VÁLVULAS - CATÁLOGO DE APLICAÇÕES / VALVES - APPLICATIONS CATALOG

CARRO DE PASSAGEIRO / COMERCIAIS / CAMINHÕES / ÔNIBUS / MÁQUINAS AGRÍCOLAS / MOTOCICLETAS / ESPECIAIS / COMPETIÇÃO  
 CARS / COMMERCIALS / TRUCKS / BUSES / AGRICULTURAL MACHINES / MOTORCYCLES / SPECIALS / COMPETITION

MODELOS	MOTORES	CIL.	COMB.	FUNÇÃO	N° RIC	C. TOTAL	Ø CABEÇA	Ø HASTE	HASTE	ÂNGULO	PTA
MODELS	ENGINES	CYL.	FUEL	FUNCTION	RIC P/N	TOTAL LENGTH	Ø HEAD	Ø STEM	STEM	ANGLE	TIP
<b>VOLKSWAGEN</b>											
GOL / PASSAT / VOYAGE / PARATI / SAVEIRO / SANTANA / SANTANA QUANTUM (ATÉ OUT. DE 1990)	AP 600 - 1.6L / AP 800 - 1.8L	4	GASOLINA	ADM	RA 1032	98,65	37,95	7,96	STD	45	C
	AP 2000 - 2.0L		ALCOOL	ESC	RE 1033	98,45	33,15	7,94	STD	45	C
	( CARBURADO )										
KOMBI / FURGÃO / PICK-UP	1600 CC (03 CANALETAS)	4	DIESEL	ADM	RA 2034	104,80	33,95	7,96	STD	45	C
				ESC	RE 2035	104,55	31,15	7,94	STD	45	C
KOMBI / FURGÃO / PICK-UP	1600 CC (01 CANALETA)	4	DIESEL	ADM	RA 2060	104,80	33,95	7,96	STD	45	A
				ESC	RE 2061	104,55	31,15	7,94	STD	45	A
GOL	1.0L - 8V ( MI )	4	GASOLINA	ADM	RA 1122	94,73	31,00	6,96	STD	45	C
				ESC	RE 1123	94,38	26,00	6,94	STD	45	C
GOL / PARATI	1.0L - 16V ( MI )	4	GASOLINA	ADM	RA 1135	98,80	22,50	5,97	STD	45	C
	AE 111			ESC	RE 1136	98,20	20,00	5,95	STD	45	C
GOL / VOYAGE / PARATI / SAVEIRO / APOLLO / POINTER / LOGUS / SANTANA / QUANTUM	AP 600 - 1.6L / AP 800 - 1.8L ( C/ INJEÇÃO )	4	GASOLINA	ADM	RA 1148	91,35	37,95	7,96	STD	45	C
			ALCOOL	ESC	RE 1149	91,15	33,15	7,94	STD	45	C
GOL / VOYAGE / PARATI / SAVEIRO / APOLLO / POINTER / LOGUS / SANTANA / QUANTUM (NOV. DE 1990...)	AP 2000 - 2.0L ( CARBURADO )	4	GASOLINA	ADM	RA 1150	98,65	39,95	7,96	STD	45	C
			ALCOOL	ESC	RE 1033	98,45	33,15	7,94	STD	45	C
GOL / VOYAGE / PARATI / SAVEIRO / APOLLO / POINTER / LOGUS / SANTANA / QUANTUM (1990 À 1993)	AP 2000 - 2.0L (C/ INJEÇÃO)	4	GASOLINA	ADM	RA 1151	91,85	39,95	7,96	STD	45	C
			ALCOOL	ESC	RE 1149	91,15	33,15	7,94	STD	45	C
GOL / VOYAGE / PARATI / SAVEIRO / APOLLO / POINTER / LOGUS / SANTANA / QUANTUM (1994...)	AP 2000 - 2.0L ( C/ INJEÇÃO )	4	GASOLINA	ADM	RA 1152	91,85	39,50	7,96	STD	45	C
			ALCOOL	ESC	RE 1149	91,15	33,15	7,94	STD	45	C
GOLF (ATÉ 1995)	1.6L / 1.8L / 2.0L	4	GASOLINA	ADM	RA 1153	91,85	37,95	7,96	STD	45	C
				ESC	RE 1154	91,15	33,15	7,94	STD	45	C
GOLF (1996...)	1.8L	4	GASOLINA	ADM	RA 1155	91,85	37,95	6,98	STD	45	C
				ESC	RE 1156	91,20	32,90	6,96	STD	45	C
GOL / SANTANA / SAVEIRO / PARATI POLO / BORA / GOLF ( 1996...)	1.6L / 1.8L / 2.0L - 8V ( EA 113 ) ( AP PERFORMANCE )	4	GASOLINA	ADM	RA 1157	91,90	39,50	6,98	STD	45	C
			FLEX	ESC	RE 1156	91,20	32,90	6,96	STD	45	C
GOL POWER	1.0L - 16V ( MI )	4	GASOLINA	ADM	RA 1218	101,75	22,50	5,97	STD	45	C
	RSH			ESC	RE 1219	101,65	20,00	5,95	STD	45	C
GOL POWER	1.0L - 8V ( MI )	4	GASOLINA	ADM	RA 1220	98,98	31,00	5,97	STD	45	C
				ESC	RE 1221	98,98	26,00	5,95	STD	45	C
GOLF / PASSAT (ALEMÃO)	1.8L - 8V ( AGU / AGN ) ( ASPIRADO )	4	GASOLINA	ADM	RA 1262	105,10	26,90	5,96	STD	45	C
				ESC	RE 1263	103,90	29,90	5,94	STD	45	C
GOLF IV / PASSAT (ALEMÃO)	1.8L - 20V ( TURBO )	5	GASOLINA	ADM	RA 1262	105,10	26,90	5,96	STD	45	C
				ESC	RE 1264	104,10	29,90	5,95	STD	45	C
KOMBI / FOX / SPACE FOX / CROSS FOX /	1. 4L / 1.6L - 8V	4	GASOLINA	ADM	RA 1277	99,25	34,50	5,97	STD	45	C
			ALCOOL	ESC	RE 1278	99,20	28,00	5,95	STD	45	C
POLO HATCH / POLO SEDAN / GOLF ( 2002...)	EA111 / RSH ÁGUA										
NOVO GOL / GOL / FOX	1.0L - 8V ( EA 111 )	4	FLEX	ADM	RA 1295	98,98	31,00	5,97	STD	45	C
				ESC	RE 1296	98,98	26,00	5,95	STD	45	C

suitable for

# VÁLVULAS - CATÁLOGO DE APLICAÇÕES / VALVES - APPLICATIONS CATALOG

CARRO DE PASSAGEIRO / COMERCIAIS / CAMINHÕES / ÔNIBUS / MÁQUINAS AGRÍCOLAS / MOTOCICLETAS / ESPECIAIS / COMPETIÇÃO  
 CARS / COMMERCIALS / TRUCKS / BUSES / AGRICULTURAL MACHINES / MOTORCYCLES / SPECIALS / COMPETITION

MODELOS	MOTORES	CIL.	COMB.	FUNÇÃO	N° RIC	C. TOTAL	Ø CABEÇA	Ø HASTE	HASTE	ÂNGULO	PTA
MODELS	ENGINES	CYL.	FUEL	FUNCTION	RIC P/N	TOTAL LENGTH	Ø HEAD	Ø STEM	STEM	ANGLE	TIP
<b>VOLKSWAGEN</b>											
NOVO GOL / VOYAGE / PARATI / SAVEIRO / FOX SPACE FOX / CROSS FOX / POLO HATCH / POLO SEDAN	1.6L - 8V (VHT)	4	FLEX	ADM	RA 1307	91,85	37,95	6,98	STD	45	C
				ESC	RE 1308	91,20	32,90	6,96	STD	45	C
NOVO GOL / NOVO GOL SELEÇÃO / NOVO GOL POWER (JULHO DE 2008...)	1.0L - 8V - AT (GERAÇÃO V)	4	FLEX	ADM	RA 1321	98,98	31,00	5,97	STD	45	C
				ESC	RE 1322	98,98	26,00	5,95	STD	45	C
NOVO GOL / NOVO GOL MOTION /	1.6V - 8V (GERAÇÃO V)	4	TOTAL FLEX	ADM	RA 1323	99,25	34,50	5,97	STD	45	C
NOVO GOL POWER MOTION (JULHO DE 2008...)				ESC	RE 1324	99,20	28,00	5,95	STD	45	C
AMAROK / JETTA / TIGUAN / PASSAT / GOLF PLUS GOLF VI / TRANSPORTER	2.0L - 16V TDI	4	DIESEL	ADM	RA 2392	99,35	28,00	5,98	STD	45	C
				ESC	RE 2393	99,10	26,00	5,97	STD	45	C
VENTO	2.5L - 16V TDI	4	DIESEL	ADM	RA 2394	88,60	29,50	5,98	STD	45	C
				ESC	RE 2395	88,25	25,50	5,97	STD	45	C
UP!	1.0L - 12V	3	FLEX	ADM	RA 1414	110,30	29,50	4,97	STD	45	C
				ESC	RE 1415	110,10	27,00	4,96	STD	30	C
GOL AT	1.0L - 16V (TURBO)	4	GASOLINA	ADM	RA 1422	98,80	22,50	5,97	STD	45	C
				ESC	RE 1423	98,50	20,00	5,95	STD	45	C
VW AMAROK / GOLF/ BORA / JETTA / PASSAT S3/	1.8L - 2.0L - 16V / 2.5L - 20V	4	GASOLINA	ADM	RA 1424	104,00	33,90	5,98	STD	45	C
				ESC	RE 1425	101,80	28,00	5,96	STD	45	C
GOLF	TFSI 1.4L - 16V	4	FLEX	ADM	RA 1467	110,25	28,55	4,98	STD	45	C
				ESC	RE 1468	110,05	25,00	4,97	STD	30	C
<b>YANMAR</b>											
MICROTRATOR: KF-200	B8 / NT75	1	DIESEL	ADM/ ESC	RAE 4094	106,89	31,00	7,93	STD	30	H
MICROTRATOR: KF-100	B9 / NB10 / NT85	1	DIESEL	ADM/ ESC	RAE 4095	117,90	35,00	8,93	STD	30	H
MICROTRATOR: TC-10	B10 / NB13 / NT95	1	DIESEL	ADM/ ESC	RAE 4096	129,87	40,00	9,91	STD	30	H
MICROTRATOR: TC-11	NS11 / NS11C / NS11T	1	DIESEL	ADM	RA 4097	114,00	38,50	7,96	STD	45	N
				ESC	RE 4098	114,00	32,50	7,96	STD	45	N
ESTACIONÁRIO	NS18	1	DIESEL	ADM	RA 4099	124,95	43,00	8,96	STD	45	A
				ESC	RE 4100	124,95	33,40	8,96	STD	45	A
ESTACIONÁRIO	NS90	1	DIESEL	ADM	RA 4101	113,13	36,50	7,96	STD	45	N
				ESC	RE 4102	113,05	30,50	7,96	STD	45	N

# VÁLVULAS - CATÁLOGO DE APLICAÇÕES | VALVES - APPLICATIONS CATALOG

CARRO DE PASSAGEIRO / COMERCIAIS / CAMINHÕES / ÔNIBUS / MÁQUINAS AGRÍCOLAS / MOTOCICLETAS / ESPECIAIS / COMPETIÇÃO  
 CARS / COMMERCIALS / TRUCKS / BUSES / AGRICULTURAL MACHINES / MOTORCYCLES / SPECIALS / COMPETITION

## VÁLVULAS ESPECIAIS PARA COMPETIÇÕES | SPECIAL VALVES - FOR COMPETITION

MODELOS	MOTORES	CIL.	COMB.	FUNÇÃO	N° RIC	C. TOTAL	Ø CABEÇA	Ø HASTE	HASTE	ÂNGULO	PTA
MODELS	ENGINES	CYL.	FUEL	FUNCTION	RIC P/N	TOTAL LENGTH	Ø HEAD	Ø STEM	STEM	ANGLE	TIP
<b>VOLKSWAGEN</b>											
VOLKSWAGEN	1.8L - 8V ( NITRETADA )	4	GASOLINA	ADM	RA 6006	104,50	41,50	6,95	STD	44	01 Canaleta "A"
			ALCOOL	ESC	RE 6007	104,50	36,50	6,95	STD	44	01 Canaleta "A"
VOLKSWAGEN	1.8L - 8V ( NITRETADA )	4	GASOLINA	ADM	RA 6202	105,02	41,00	7,98	STD	45	03 Canaletas "C"
			ALCOOL	ESC	RE 6203	104,69	36,00	7,94	STD	45	03 Canaletas "C"
VOLKSWAGEN	1.8L - 8V ( NITRETADA )	4	GASOLINA	ADM	RA 6204	104,50	41,50	6,95	STD	44	03 Canaletas "C"
			ALCOOL	ESC	RE 6205	104,50	36,50	6,95	STD	44	03 Canaletas "C"
VOLKSWAGEN	1.600 CC AR ( NITRETADA )	4	GASOLINA	ADM	RA 6223	111,70	44,00 / 40,00	7,98	STD	44	03 Canaletas "C"
			ALCOOL	ESC	RE 6224	112,00	37,50 / 35,50	7,94	STD	44	03 Canaletas "C"
<b>GENERAL MOTORS</b>											
GENERAL MOTORS	4.1L ( NITRETADA )	6	GASOLINA	ADM	RA 6009	124,70	51,40	8,67	STD	45	01 Canaleta "K"
			ALCOOL	ESC	RE 6010	125,10	42,30	8,67	STD	45	02 Canaletas "J"

## VÁLVULAS PARA MOTOCICLETAS

MODELOS	MOTORES	CIL.	COMB.	FUNÇÃO	N° RIC	C. TOTAL	Ø CABEÇA	Ø HASTE	HASTE	ÂNGULO	PTA
MODELS	ENGINES	CYL.	FUEL	FUNCTION	RIC P/N	TOTAL LENGTH	Ø HEAD	Ø STEM	STEM	ANGLE	TIP
<b>HONDA</b>											
CG / ML (ATÉ 1982) - CG TODAY CARGO (ATÉ 1991)	125CC	1	GASOLINA	ADM	RA 5170	93,30	29,00	5,45	STD	45	0
				ESC	RE 5171	92,60	24,00	5,43	STD	45	0
TURUNA / ML / XL DUTY (ATÉ 1993)	125CC	1	GASOLINA	ADM	RA 5172	92,30	30,00	5,45	STD	45	0
				ESC	RE 5173	91,40	25,00	5,43	STD	45	0
CG TODAY / CARGO / TITAN / XLR (APÓS 1991)	125CC	1	GASOLINA	ADM	RA 5174	93,00	30,00	5,45	STD	45	0
				ESC	RE 5175	92,30	25,00	5,43	STD	45	0
XLX / NX	350CC	1	GASOLINA	ADM	RA 5176	103,44	32,00	5,48	STD	45	A
				ESC	RE 5177	101,94	29,00	5,47	STD	45	A
XLX 250	250CC	1	GASOLINA	ADM	RA 5180	105,11	29,00	5,48	STD	45	A
				ESC	RE 5181	103,78	26,00	5,47	STD	45	A
CB 400	400CC	2	GASOLINA	ADM	RA 5182	95,30	26,00	5,45	STD	45	A
				ESC	RE 5183	100,55	32,00	6,56	STD	45	A
CB 750	750CC	4	GASOLINA	ADM	RA 5184	86,85	25,00	4,98	STD	45	0
CG / TITAN / KS ( 2003... )	125CC	1	GASOLINA	ADM	RA 5186	93,48	29,00	4,98	STD	45	0
				ESC	RE 5187	92,32	25,00	4,96	STD	45	0

# VÁLVULAS - CATÁLOGO DE APLICAÇÕES / VALVES - APPLICATIONS CATALOG

CARRO DE PASSAGEIRO / COMERCIAIS / CAMINHÕES / ÔNIBUS / MÁQUINAS AGRÍCOLAS / MOTOCICLETAS / ESPECIAIS / COMPETIÇÃO  
CARS / COMMERCIALS / TRUCKS / BUSES / AGRICULTURAL MACHINES / MOTORCYCLES / SPECIALS / COMPETITION

## VÁLVULAS PARA MOTOCICLETAS

MODELOS	MOTORES	CIL.	COMB.	FUNÇÃO	N° RIC	C. TOTAL	Ø CABEÇA	Ø HASTE	HASTE	ÂNGULO	PTA
MODELS	ENGINES	CYL.	FUEL	FUNCTION	RIC P/N	TOTAL LENGTH	Ø HEAD	Ø STEM	STEM	ANGLE	TIP
<b>HONDA</b>											
CBX / NX 150 / 200CC	150 / 200CC	1	GASOLINA	ADM	RA 5190	89,14	31,50	5,45	STD	45	A
				ESC	RE 5191	89,00	27,00	5,43	STD	45	A
BIZ / DREAM / POP	100CC	1	GASOLINA	ADM	RA 5192	65,90	23,00	4,98	STD	45	0
				ESC	RE 5193	65,45	20,00	4,95	STD	45	0
TWISTER / TORNADO	250CC	1	GASOLINA	ADM	RA 5196	83,54	28,00	4,98	STD	45	0
				ESC	RE 5197	83,20	23,45	4,96	STD	45	0
TITAN ATÉ 2004 CG 150 ATÉ 2008	150CC	1	GASOLINA	ADM	RA 5216	83,40	30,00	4,98	STD	45	0
				ESC	RE 5217	82,50	26,00	4,96	STD	45	0
BIZ / DREAM	125CC ( INJEÇÃO )	1	GASOLINA	ADM	RA 5238	71,95	24,00	4,98	STD	45	0
				ESC	RE 5239	71,70	21,00	4,96	STD	45	0
FAN / CG / ES / KS / CARGO ( 2009... )	125CC ( CARBURADO / INJEÇÃO )	1	GASOLINA	ADM	RA 5400	83,60	27,00	4,98	STD	45	0
				ESC	RE 5401	82,60	23,00	4,97	STD	45	0
FALCON NXR	400CC	1	GASOLINA	ADM	RA 5434	102,60	33,00	5,48	STD	45	0
				ESC	RE 5435	101,05	29,00	5,46	STD	45	0
NXR / BROS / CG / TITAN / START	160CC	1	GASOLINA	ADM	RA 5436	87,25	30,00	4,99	STD	45	0
				ESC	RE 5437	86,60	26,00	4,97	STD	45	0
CB 300 (2016...)	300CC	1	GASOLINA	ADM	RA 5469	83,65	27,00	4,98	STD	45	0
				ESC	RA 5197	83,20	23,45	4,96	STD	45	0
TWISTER (2016...)	250CC	1	FLEX	ADM	RA 5491	82,90	25,00	4,98	STD	45	0
				ESC	RE 5492	83,45	21,60	4,97	STD	45	0
POP (2016...)	110CC	1	GASOLINA	ADM	RA 5493	76,70	25,50	4,98	STD	45	0
				ESC	RE 5494	76,05	21,00	4,97	STD	45	0
<b>YAMAHA</b>											
TDM XT 225	225CC	1	GASOLINA	ADM	RA 5188	93,68	34,00	5,98	STD	45	0
FAZER	250CC			ESC	RE 5189	92,40	28,50	5,96	STD	45	0
YBR 125	125CC	1	GASOLINA	ADM	RA 5194	64,35	25,98	4,98	STD	45	0
				ESC	RE 5195	63,60	22,00	4,97	STD	45	0
<b>SUZUKI</b>											
YES	125CC	1	GASOLINA	ADM	RA 5291	94,55	25,50	4,98	STD	45	0
				ESC	RE 5292	93,85	22,55	4,96	STD	45	0
YES	150CC	1	GASOLINA	ADM	RA 5471	92,30	25,60	4,98	STD	45	0
				ESC	RE 5472	91,95	22,60	4,97	STD	45	0
<b>SUNDOWN</b>											
HUNTER MAX	125CC	1	GASOLINA	ADM	RA 5230	93,30	29,00	5,45	STD	45	0
				ESC	RE 5231	92,60	24,00	5,43	STD	45	0
NEW WEB	100CC	1	GASOLINA	ADM	RA 5232	65,90	23,00	4,98	STD	45	0
				ESC	RE 5233	65,45	20,00	4,95	STD	45	0



***TABELA DE EQUIVALÊNCIAS***  
***EQUIVALENCE TABLE***

# EQUIVALÊNCIAS RIC / RIC EQUIVALENCES

MARCA	Nº RIC	Nº ORIGINAL	Nº EATON	Nº BBB	Nº MAHLE
FORD WILLYS	RA 1001	800558	VS0016	3272-A	VA0230119
FORD WILLYS	RE 1002	B12421	VS0026	3272-E	
FORD WILLYS	RE 1003	B27220	VS0770	3273-E	VE0230118
VOLKSWAGEN	RA 1008	113.109.601D / 040.109.601.1	VS0868	452-A	VA0700050
VOLKSWAGEN	RE 1009	113.109.612 / 040.109.612.2	VS0850	1452-E	VE0700049
VOLKSWAGEN	RA 1010	311.109.601 / 040.109.601.2	VS0869	453-A	VA0700020
VOLKSWAGEN	RE 1011	311.109.612 / 040.109.612.3	VS1167	1453-E	VE0700022
VOLKSWAGEN	RA 1014	056.109.601-A	VS0981	422-A	VA0700061
VOLKSWAGEN	RE 1015	056.109.611-A	VS0980	1422-EB	VE0700062
FIAT	RA 1016	4340118	VS0992	380-AC	VA0250002
FIAT	RE 1017	4340119 / 59852970	VS0993	1380-EC	VE0250001
GENERAL MOTORS	RA 1026	2638552 / 3774052 / 94616648	VS1202	137-A	VA0140104
GENERAL MOTORS	RE 1027	3724778 / 3989084 / 94623462	VS1334	1138-E	VE0140105
GENERAL MOTORS	RA 1028	94621104 / 1038	VS1299	332-AC	VE0140084
GENERAL MOTORS	RE 1029	94621105 / 1043	VS1302	1332-ECP	VE0140083
VOLKSWAGEN	RA 1030	049.109.601-F	VS1356	825-A	VA0700078
VOLKSWAGEN	RE 1031	049.109.611-F	VS1357	1825-E	VE0700077
VOLKSWAGEN / FORD / AUTOLATINA	RA 1032	035.109.601-C	VS1646	815-A	VA0700017
VOLKSWAGEN / FORD / AUTOLATINA	RE 1033	035.109.611-F	VS1696	1815-EB	VE0700016
GENERAL MOTORS	RA 1036	90136614 / 6613	VS1415	344-AC	VA0140014
GENERAL MOTORS	RE 1037	90136620 / 6621	VS1658	1344-ECP	VE0140113
FORD	RA 1038	84AU-6507-A	VS2489	3036-A	VA0590043
FORD	RE 1039	84AU-6505-A	VS2465	3037-EP	VE0590042
FIAT	RA 1040	4239917 / 4460697	VS2556	175-AC	VA0250060
FIAT	RE 1041	5973129	VS2557	1383-EC	VE0250059
GENERAL MOTORS	RA 1042	52285384	VS2473	3110-AC	VA0140041
GENERAL MOTORS	RE 1043	90323756	VS1984	23109-ECP	VE0140039
GENERAL MOTORS	RA 1048	2787538 / 3786360	VS0865	137-A +3	VA0140108
GENERAL MOTORS	RE 1049	3732758 / 94623463	VS1335	1138-E+3	VE0140107
GENERAL MOTORS	RA 1050	3786361 / 3995685	VS0866	137-A+15	VA0140110
GENERAL MOTORS	RE 1051	7323108 / 3995603 / 94625721	VS1481	1138-E+15	VE0140109
GENERAL MOTORS	RA 1052	3786362	VS 867 / VS 1494	137-A +30	

# EQUIVALÊNCIAS RIC / RIC EQUIVALENCES

MARCA	Nº RIC	Nº ORIGINAL	Nº EATON	Nº BBB	Nº MAHLE
GENERAL MOTORS	RE 1053	94625722	VS 1482 / VS 1497	1138-EC+30	
GENERAL MOTORS	RA 1066	94621039 / 1040	VS1336	332-AC +3	VA0140084 0,076
GENERAL MOTORS	RE 1067	94621045	VS1339	1332-ECP+3	VE0140083 0,076
GENERAL MOTORS	RA 1068	94621041	VS1337	332-AC +6	VA0140084 0,152
GENERAL MOTORS	RE 1069	94621047	VS1338	1332-ECP+6	VE0140083 0,152
GENERAL MOTORS	RA 1070	90106792	VS1407	3108-AC	
GENERAL MOTORS	RE 1071	90106797	VS1411	23108-ECPS	
FIAT	RA 1074	7617500	VS2692	856-AC	VA0250054
FIAT	RE 1075	5973128	VS2691	1175-EC	VE0250053
FIAT	RA 1084	7633751 / 46470637 / 46559031	VS4897	3234-AC	VA0250018
FORD	RA 1085	84AU-6507-B	VS1492		VA0590044
GENERAL MOTORS	RA 1086	3695455 / 3758810	VS0040	135-A	VA0140106
FORD WILLYS	RE 1103	37234			
GENERAL MOTORS	RA 1104	90220119	VS1980	3109-AC	VA0140040
FIAT	RA 1105	7722907	VS4530	3320-AC	VA0250052
FIAT	RE 1106	7574742	VS4531	3321-ECB	VE0250051
FORD	RE 1107	78MU-6505-A	VS1204	1326-E	VE0590092
FORD	RA 1108	89BM-6507-AA	VS4763	3052-AC	VA0590181
FORD	RA 1109	89BM-6507-BA	VS4765	3054-AC	VA0590172
FORD	RE 1110	97BM-6505-AA / 89BM-6505-CA	VS4764	3053-ECB	VE0590173
GENERAL MOTORS	RA 1111	90323519 / 642763	VS4261	3136-AC	VA0140015
GENERAL MOTORS	RE 1112	90323524 / 642890	VS4262	3137-ECB	VE0140014
GENERAL MOTORS	RA 1113	90215492 / 7083246	VS4899	3146-AC	VA0140086
GENERAL MOTORS	RE 1114	90324412 / 7083242	VS4900	3147-ECB	VE0140085 / VE0140370
VOLKSWAGEN	RE 1121	43109611	VS1317	1305-ECP	VE0700021
VOLKSWAGEN	RA 1122	030.109.601-AC	VS4934	3512-A	VA0700028
VOLKSWAGEN	RE 1123	030.109.611-N	VS4856	3513-EB	VE0700027
GENERAL MOTORS	RA 1124	90412712	VS4901	3138-AC	VA0140076
GENERAL MOTORS	RE 1125	90412974	VS4902	3139-EC	VE0140075
FIAT	RA 1126	46413806	VS5155	3514-AC	VA0250165
FIAT	RE 1127	46413807	VS5291	3515-EC	VE0250164
VOLKSWAGEN	RA 1135	036.109.601-R	VS5223	3508-A	VA0700009

# EQUIVALÊNCIAS RIC / RIC EQUIVALENCES

MARCA	Nº RIC	Nº ORIGINAL	Nº EATON	Nº BBB	Nº MAHLE
VOLKSWAGEN	RE 1136	036.109.611-J	VS5224	3509-EB	VE0700008
GENERAL MOTORS	RA 1137	93248325	VS5794	3578-AC	VA0140026
GENERAL MOTORS	RE 1138	93248326	VS5793	3579-ECB	VE0140025
FIAT	RE 1139	7633752 / 46470638	VS5080	23234-EC	
FIAT	RA 1140	7633751 / 46470637 / 46559031	VS4897	3234-AC	VA0250018
FIAT	RE 1141	7633752 / 46470638	VS4898		VE0250019
FIAT	RA 1142	465530460	VS5085	3800-AC	VA0250162
FIAT	RE 1143	465530470	VS5086	3801-EC	VE0250167
FIAT	RA 1144	46553048	VS5087	3558-AC / 3998-AC	VA0250166
FIAT	RE 1145	46553049	VS5088	3559-ECBS	VE0250163
FIAT	RA 1146	7735898 / 60812982	VS5823	3600-AC	VA0250160
FIAT	RE 1147	7735899 / 60812981	VS5825	3601-ECBS	VE0250161
VOLKSWAGEN	RA 1148	035.109.601-G	VS4762	3312-A	VA0590066
VOLKSWAGEN	RE 1149	026.109.611-A / 048.109.611-A	VS2844	23238-EB	VE0590065
VOLKSWAGEN	RA 1150	026.109.601-D / 035.109.601-C	VS2639	3602-A	VA0590067
VOLKSWAGEN	RA 1151	026.109.601-CF	VS2619	3310-A	
VOLKSWAGEN	RA 1152	026.109.101-CF / 048.109.601-A	VS4349	3313-A	
VOLKSWAGEN	RA 1153	035.109.601-J/K		3238-A	
VOLKSWAGEN	RE 1154	026.109.611-A / 048.109.611-A	VS2844	23238-EB	VE0590065
VOLKSWAGEN	RA 1155	048.109.601- E	VS4510	3484-A	VA0700088
VOLKSWAGEN	RE 1156	048.109.611-B	VS4511	3485-EBS	VE0700087
VOLKSWAGEN	RA 1157	078.109.601-B	VS4546	3486-A	VA0700089
GENERAL MOTORS	RA 1158	90412277 / 641022	VS5095	3140-AC	VA0140072
GENERAL MOTORS	RE 1159	90410813 / 641325	VS5094	23141-EC	VE0140071
FORD	RA 1164	928M-6507-F2A	VS5294	3066-AC	VA0590180
FORD	RE 1165	948M-6505-D2A	VS5295	3067-ECB	VE0590182
FORD	RA 1166	97MM-6507-B2B	VS5833	3064-AC	VA0590179
FORD	RE 1167	XS6G-6505-B2A	VS5834	3065-EN	VE0590178
FORD	RA 1168 (ANTIGA 1297)	XS6E-6507-AA / 7S6G-6507-AA	VS5436	3062-AC	VA0590170 / VA0591474
FORD	RE 1169 (ANTIGA 1298)	XS6E6505-AB / 7S6G-6505-AA	VS5437	3063-ECB	VE0590171
FIAT	RA 1198	46406169 / 75474000	VS2873	1826-AC	VA0250159
FIAT	RE 1199	75970800	VS2874	1826-ECB	VE0250158

# EQUIVALÊNCIAS RIC / RIC EQUIVALENCES

MARCA	Nº RIC	Nº ORIGINAL	Nº EATON	Nº BBB	Nº MAHLE
RENAULT	RA 1208	7701469266 / 7700862479		3620-A	VA0180421
RENAULT	RE 1209	7701469269 / 7700862480		3621-EB	VE0180422
RENAULT	RA 1210	7701472986 / 13201-00Q0H	VS5802	3862-A	VA0181606 / VA0180427
RENAULT	RE 1211	7701473004 / 13202-00Q0K	VS5799	3863-EB	VE0181607 / VE0180438
RENAULT	RA 1212	7701471378 / 8200059409	VS5895	3598-A	VA0180124
RENAULT	RE 1213	7701473354 / 8200059409	VS5894	3599-EB	VE0180125
VOLKSWAGEN	RA 1218	036.109.601-AE		3870-A	VA0700074
VOLKSWAGEN	RE 1219	036.109.611-T		3871-EB	VE0700073
VOLKSWAGEN	RA 1220	030.109.601-AP	VS5697	3868-A	VA0701421
VOLKSWAGEN	RE 1221	030.109.611-AE	VS5454	3869-EB	VE0701422
FIAT	RA 1252	60811153 / 7766564	VS5808	3736-AC	VA0250168
FIAT	RE 1253	60811154 / 7766565	VS5805	3737-ECB	VE0250169
GENERAL MOTORS	RA 1258	90215492 / 7083246	VS4899	3146-AC	VA0140086
GENERAL MOTORS	RE 1259	90324412 / 7083242	VS4900	3147-ECB	VE0140085 / VE0140370
FIAT	RA 1260	90215492 / 7083246	VS4899	3146-AC	VA0140086
FIAT	RE 1261	90324412 / 7083242	VS4900	3147-ECB	VE0140085 / VE0140370
AUDI / VOLKSWAGEN	RA 1262	058.109.601-C	VS5807	3488-AS	VA0700242
AUDI / VOLKSWAGEN	RE 1263	058.109.611-M		3583- EC	VE0700243
AUDI / VOLKSWAGEN	RE 1264	058.109.611-E	VS5813	3489- EC	VE0700243
RENAULT	RA 1267	7701474287 / 7701471279	VS5675	3864-A	VA0180415
RENAULT	RE 1268	7701474286 / 7701471280	VS5798	3865-EB	VE0180416
FIAT	RA 1271	55195497 / 55205734	VS5263	3956-AC	VA0250271
FIAT	RE 1272	55195498	VS5264	3997-ECB	VE0250272
GENERAL MOTORS	RA 1273	93333561 / 7083333	VS5907	4054-AC	VA0140226
GENERAL MOTORS	RE 1274	93333562 / 7083334	VS5906	4055- ECB	VE0140248
FORD	RA 1275	YS4E-6507-AB / X566-6507-BA	VS5349	3092-AC	VA0590174
FORD	RE 1276	YS4E-6505-BA / XS6E6505-BB	VS5154	3093-EC	VE0590175
VOLKSWAGEN	RA 1277	032.109.601-M	VS5698	3886-A	VA0700252 / VA0700267
VOLKSWAGEN	RE 1278	032.109.611-L	VS5115	3887-EB	VE0700253
PEUGEOT	RA 1281	0948.58	VS5852	3242-A	
CITROEN / PEUGEOT	RE 1282	0949.59	VS5819	23242-E	VE0440588
CITROEN / PEUGEOT	RA 1283	0948.A9	VS5803	3616-A	VA0440578

# EQUIVALÊNCIAS RIC / RIC EQUIVALENCES

MARCA	Nº RIC	Nº ORIGINAL	Nº EATON	Nº BBB	Nº MAHLE
CITROEN / PEUGEOT	RE 1284	0949.A8	VS5797	3617-E	VE0440598
CITROEN / PEUGEOT	RA 1285	0948.92	VS5817	3540-A	VA0440561
CITROEN / PEUGEOT	RE 1286	0949.92	VS5814	3541-ECB	VE0440297
CITROEN / PEUGEOT	RA 1287	0948.99	VS5810	3884-A	VA0440579
CITROEN / PEUGEOT	RE 1288	0949.99	VS5809	3885-ECB	VE0441603
GENERAL MOTORS	RA 1289	90323518	VS4261	3136-AC	VA0140015
GENERAL MOTORS	RE 1290	93308640 / 90323523	VS4262	3137-EC	VE0140014
FIAT	RA 1293	465530460	VS5085	3800-AC	VA0250162
FIAT	RE 1294	465530470	VS5086	3801-EC	VE0250167
VOLKSWAGEN	RA 1295	030.109.601-AP	VS5697	3868-A	VA0701421
VOLKSWAGEN	RE 1296	030.109.611-AE	VS5454	3869-EB	VE0701422
ASIA MOTORS	RA 1299	13711-87701	VS5909	455-A	VA0720156
ASIA MOTORS	RE 1300	13715-87701	VS5863	1455-ECP	VE0720157
GENERAL MOTORS	RA 1301	93361392	VS5551	4004-AC	VA0141431
GENERAL MOTORS	RE 1302	93385791	VS5605	4005-EC	VE0141576
GENERAL MOTORS	RA 1303	93399246 / 7083246	VS5553	3912-AC	VA0251614
GENERAL MOTORS	RE 1304	93399248 / 7083242	VS5606	3913-ECB	VE0251615
GENERAL MOTORS	RA 1305	93399245	VS5552	4006-AC	VA0141396
GENERAL MOTORS	RE 1306	93399247	VS5604	4007-ECB	VE0141573
VOLKSWAGEN	RA 1307	048.109.601-E	VS4510	3484-A	VA0700088
VOLKSWAGEN	RE 1308	048.109.611-B	VS4511	3485-EBS	VE0700087
CITROEN / PEUGEOT	RA 1311	0948.56		3301-A	
CITROEN / PEUGEOT	RE 1312	0948.57		23301-ECB	
FIAT	RA 1313	55195784 / 55240709	VS5622	4156-AC	VA0251632
CITROEN / PEUGEOT	RA 1314	0948.91	VS5822	3798-A	VA0441091
RENAULT	RA 1317	7700635409		421-A	
RENAULT	RE 1318	7700644709		1421-EB	
FORD	RA 1319	F5RZ-6505-A			
FORD	RE 1320	948M-6505-F2A			
VOLKSWAGEN	RA 1321	030.109.601-AP	VS5697	3868-A	VA0701421
VOLKSWAGEN	RE 1322	030.109.611-AE	VS5454	3869-EB	VE0701422
VOLKSWAGEN	RA 1323	032.109.601-M	VS5698	3886-A	VA0700252 / VA0700267

# EQUIVALÊNCIAS RIC / RIC EQUIVALENCES

MARCA	Nº RIC	Nº ORIGINAL	Nº EATON	Nº BBB	Nº MAHLE
VOLKSWAGEN	RE 1324	032.109.611-L	VS5115	3887-EB	VE0700253
FORD	RA 1339	1S7Z-6507-AA	VS5857	3094-AC	VA0590255
FORD	RE 1340	1S7Z-6505-AA	VS5862	3095-EC	VE0590256
HONDA	RA 1347	14711-P08000		3854-AN	VA0510209
HONDA	RE 1348	14721-P08000		3855-EBN	VE5511749
TOYOTA	RA 1349	13711-15090			VA0630205
TOYOTA	RE 1350	13715-16060			VE0630206
TOYOTA	RA 1353	13711-22040	VS5868	3974-AN	VA0630207
TOYOTA	RE 1354	13715-22030	VS5860	3975-EN	VE0630208
RENAULT	RA 1359	7702220679	VS5875	3308-AC	VA0180389
RENAULT	RE 1360	7700638247	VS5873	1363-ECP	VE0180305
RENAULT	RA 1369	7701468960	VS6058	3714-A	VA0180395
RENAULT	RE 1370	7701466607	VS6059	3715-EB	VE0180396
GENERAL MOTORS	RA 1371	93203649 / 93382956	VS1980	3109-AC / 4056-AC	VA0141385
GENERAL MOTORS	RE 1372	93382957 / 90323756	VS1984	23109-EC / 4057-EX	VE0140039
ASIA MOTORS	RA 1385				
ASIA MOTORS	RE 1386				
RENAULT	RA 1387	7700853390		4184-AN	
RENAULT	RE 1388	7700865934		3527-E	
HONDA	RA 1389	14711-PWA-000		4164-AN	VA0510263
HONDA	RE 1390	14721-PWA-000		4165-EN	VE0510264
FIAT	RA 1391	7609772		855-AC	
FIAT	RA 1398	55224590	VS5687	4154-AC	VA0251610
FIAT	RE 1399	55231699	VS5561	4155-EN	VE0251611
HONDA	RA 1402	14711-PWC-000		4166-AN	VA0510265
HONDA	RE 1403	14721-PWC-000		4167-EN	VE0510266
FIAT	RA 1404	55185028	VS5087	3998-AC	VA0250166
FIAT	RE 1405	55185080		3999-ECB	
HYUNDAI / KIA	RA 1406	22211-23600	VS6062	4536-AN	VA2081417
HYUNDAI / KIA	RE 1407	22212-23600	VS6063	4537-EN	VE2081418
NISSAN	RA 1408	13201-EN20B / 13201-CP50A	VS6054	4134-A	VA0031570
NISSAN	RE 1409	13202-EN20B / 13202-0970R	VS6055	4135-EN	VE0031605

# EQUIVALÊNCIAS RIC / RIC EQUIVALENCES

MARCA	Nº RIC	Nº ORIGINAL	Nº EATON	Nº BBB	Nº MAHLE
CITROEN / PEUGEOT	RA 1410	9675424780	VS5932	4210-AX	VA0441689
CITROEN / PEUGEOT	RE 1411	9675424980	VS5933	4211-EX	VE0441690
FORD	RA 1412	30711639 / 1S4G-6507-CB	VS5964	4344-AN	VA0591471
FORD	RE 1413	30711638 / 1S6G-6505-BA	VS5965	4345-EN	VE0591472
VOLKSWAGEN	RA 1414	04C-109-601B		4520-AN	
VOLKSWAGEN	RE 1415	04C-109.611		4521-EBN	
FIAT	RA 1416	55219002	VS5554	4256-AC	VA0251633
FIAT	RE 1417	55218807	VS5555	4257-EC	VE0251476
MITSUBISHI	RA 1418	MD-162422		3462-AN	VA1951571
MITSUBISHI	RE 1419	MD-162423		3463-EBN	VE1951572
MERCEDES BENZ	RA 1420				
MERCEDES BENZ	RE 1421				
VOLKSWAGEN	RA 1422	036.109.601-R	VS5223	3508-A	VA0700009
VOLKSWAGEN	RE 1423	036.109.611-J	VS5224	3509-EB	VE0700008
AUDI / VOLKSWAGEN	RA 1424	06D.109.601-M		4408-AX	VA0701459
AUDI / VOLKSWAGEN	RE 1425	06D.109.611.K		4221- ECB	VE0701460
HYUNDAI / KIA	RA 1426	22211-04000	VS6043	4490-AN	VA2081664
HYUNDAI / KIA	RE 1427	22212-04070	VS6044	4491-EN	VE2081665
TOYOTA	RA 1428	13711-47020	VS5940	4500-AN	VA0631640
TOYOTA	RE 1429	13715-47030	VS5941	4501-EN	VE0631641
GENERAL MOTORS	RA 1432	55569449	VS6072	4454-AN	VA0141579
GENERAL MOTORS	RE 1433	55569450	VS6073	4455-EN	VE0141580
MAZDA	RA 1438	F801-12-111		829-ABN-30	
MAZDA	RE 1439	F801-12-121		1829-EPN-30	
TOYOTA	RA 1440	13711-37020		4182-AN	
TOYOTA	RE 1441	13715-37030		4183-EN	
RENAULT	RA 1444	132010427-R		4694-AN	VA0181730
RENAULT	RE 1445	132028317-R		4595-EN	VE0181731
HYUNDAI / KIA	RA 1446	22211-2B400	VS6064	4250-AN	VA2081552
HYUNDAI / KIA	RE 1447	22212-2B000	VS6065	4251-EN	VE2081553
HONDA	RA 1448	14711-RNA-A000		4176-AN	VA0510257
FIAT	RA 1452	55247715	VS5744	4696-AN	

# EQUIVALÊNCIAS RIC / RIC EQUIVALENCES

MARCA	Nº RIC	Nº ORIGINAL	Nº EATON	Nº BBB	Nº MAHLE
FIAT	RE 1453	55247716	VS5745	4697-ENX	
NISSAN	RA 1456	13201-ED000	VS6087	4518-AN	VA0031608
NISSAN	RE 1457	13202-ED000	VS6088	4519-EN	VE0031609
CITROEN / PEUGEOT	RA 1458	9465002080		4374-A	
CITROEN / PEUGEOT	RE 1459	9465002980		4375-EC	
FIAT	RE 1464	55203211		3957-ECB	
AUDI / VOLKSWAGEN	RA 1467	04E-109-601-B		4526-A	
AUDI / VOLKSWAGEN	RE 1468	04E-109-611-J		4527-ECB	
FIAT	RA 1473	0055267853	VS5930	4790-AN	VA0251785
FIAT	RE 1474	0055275599	VS5931	4791-EN	VE0251786
RENAULT	RA 1475	8201705201			
RENAULT	RE 1476	8201705203			
FORD	RA 1477	CM5Z/6507/A	VS6110	4642-AN	VA0591722
FORD	RE 1478	E3BG/6505/BB	VS6111	4643-EN	VE0591723
RENAULT	RA 1479			4794-AN	
RENAULT	RE 1480			4795-EN	
GENERAL MOTORS	RA 1483	14025572 / 10241743	VS5777	487-AC	VA0140183
GENERAL MOTORS	RE 1484	12550909	VS5778	1330-ECP	VE0140184
FORD	RA 1495	GN1Z6507A		4773-AN	
FORD	RE 1496	3849818		4774-EN	
RENAULT	RE 1497	132028257R			
GENERAL MOTORS	RA 1498	641317		3158-AC	
GENERAL MOTORS	RE 1499	641015		3159-ECB	
RENAULT	RA 1500	8201705201 / 132016529R		4775-AN	VA0181779
RENAULT	RE 1501	8201705203 / 132025069R		4776-EN	VE0181780
HONDA	RA 1502				
GENERAL MOTORS	RA 1505	12657057			
GENERAL MOTORS	RE 1506	12675684			
HYUNDAI / KIA	RA 1509				
HYUNDAI / KIA	RE 1510				
FIAT	RA 1511	55271872			
CHERY	RA 1514			4360-AN	

# EQUIVALÊNCIAS RIC / RIC EQUIVALENCES

MARCA	Nº RIC	Nº ORIGINAL	Nº EATON	Nº BBB	Nº MAHLE
CHERY	RE 1515			4361-EN	
HYUNDAI	RA 1516			3738-AN	
HYUNDAI	RE 1517			3739-EN	
GENERAL MOTORS	RA 1518	55496633			
GENERAL MOTORS	RE 1519	25197617			
GENERAL MOTORS	RE 1520	55496632			
PEUGEOT	RA 1523	0948-93		4010-A	VA0440575
PEUGEOT	RE 1524	0949-70		4011-ECB	VE0440596
MAXION / PERKINS	RA 2004	910069 / 70910005	VS0754	250-A	VA0570033
MAXION / PERKINS	RE 2005	910073 / 70910006	VS0457	1251-EPMF	VE0570034
MAXION / PERKINS	RA 2006	910001 / 70910003	VS0887	247-A	VA0570035
MAXION / PERKINS	RE 2007	910002	VS0886	248-E	VE0570036
MAXION / PERKINS	RA 2012	70910004 / 70910001	VS0887	247-ACB	VA0570032
MAXION / PERKINS	RE 2013	70910002	VS0886	248-ECB	VE0570031
MWM	RA 2018	922604600054	VS1134	565-AC	VA0130011
MWM	RE 2019	930.804.600.024	VS1135	1565-ECB	VE0130010
MAXION / PERKINS	RA 2022	70910009 / 70910007	VS1160	249-AC	VA0570024
MAXION / PERKINS	RE 2023	70910010 / 70910008	VS1161	1249-ECP	VE0570023
MERCEDES BENZ	RA 2024	3520530101	VS1177	226-AC	VA0480004
MERCEDES BENZ	RE 2025	3520531505	VS1178	1226-ECB	VE0480003
VOLKSWAGEN	RA 2034	068.109.601-C	VS1358	303-AC	VA0700082
VOLKSWAGEN	RE 2035	069.109.611-C	VS1359	1303-ECB	VE0700081
MERCEDES BENZ	RA 2044	3210530801		224-AC	
MERCEDES BENZ	RE 2045	3210530705		1225-ECP	
MWM	RA 2046	922.204.600.024	VS0757	3330-A	
MWM	RE 2047	922.204.601.013	VS0758	3331-E	
FORD	RA 2058	D6NN-6507-A	VS1118	329-A	
FORD	RE 2059	D6NN-6505-A	VS1117	1329-E	
VOLKSWAGEN	RA 2060				
VOLKSWAGEN	RE 2061				
MAXION / PERKINS	RA 2072	70910011	VS1423	1498-ACP	VA0570111
MAXION / PERKINS	RE 2073	70910012	VS1424	1498-ECP	VE0570112

# EQUIVALÊNCIAS RIC / RIC EQUIVALENCES

MARCA	Nº RIC	Nº ORIGINAL	Nº EATON	Nº BBB	Nº MAHLE
MWM	RA 2076	622,804,603,014	VS2696	3390-AC	VA0130099
MWM	RE 2077	922,904,608,074	VS2695	3391-ECB	VE0130098
MAXION / PERKINS	RA 2078	70910017	VS2815	3392-AC	VA0570038
MAXION / PERKINS	RE 2079	70910018	VS2816	3393-ECB	VE0570037
MERCEDES BENZ	RA 2080	3660500326	VS1814	3260-ACB	VA0480006
MERCEDES BENZ	RE 2081	3660500227	VS2535	23260-ECB	VE0480005
MERCEDES BENZ	RA 2082	3660500226	VS2587	2026-AC	VA0480096
MERCEDES BENZ	RE 2083	3660500027	VS1178	21226-ECB	VE0480097
ASIA MOTORS	RA 2115	0636-12111	VS5904	3296-AN	VA0720154
ASIA MOTORS	RE 2116	0527-12121	VS5908	3297-EBN	VE0720155
KIA	RA 2117	OVN01-12-111	VS5281	3548-APN	VA2110185
KIA	RE 2118	OVN01-12-121		3549-EBN	VE02110186
KIA	RA 2119	OK-71012111	VS5284	3298-AN	VA2110229
KIA	RE 2120	OK-71012121	VS5285	3299-EN	VE2110249
MAXION / PERKINS	RA 2128	70910025	VS2831	3342-AC	VA0570123
MAXION / PERKINS	RA 2129	70910037	VS4266	3388-ACB	VA0570657
MAXION / PERKINS	RE 2130	70910038	VS2833	3389-ECB	VE0570122
MERCEDES BENZ	RA 2131	3660501226	VS2770	3260-ACB 20º	VA0480007
MERCEDES BENZ	RE 2132	3760500127	VS2535	23260-ECB	VE0480005
MWM	RA 2133	961004600034	VS2825	3422-AC	VA0130101
MWM	RE 2134	961004600024	VS2824	23423-ECB	VE0130100
MWM	RA 2160	940704600034 / 940704608024	VS5299	3546-AC	VA0130277
MWM	RE 2161	940704600024	VS5300	3547-ECB	VE0130278
MAXION / PERKINS	RA 2162	70910053	VS5426	3344-ACB	VA0570250
MAXION / PERKINS	RE 2163	70910076	VS5427	23345-ECBS	VE0570230
FIAT	RA 2214	7301820	VS5242	3510-ACB	VA0010211
FIAT	RE 2215	99432837	VS5244		VE0010212
FORD	RA 2226	87802257			
FORD	RE 2227	87802256			
FIAT	RA 2234	98468338	VS5243	3586-ACB	VA0250513
FIAT	RE 2235	98418161		3587-ECB	
KIA	RA-2250	OK-6512111	VS5296	3828-AN	VA2110187

# EQUIVALÊNCIAS RIC / RIC EQUIVALENCES

MARCA	Nº RIC	Nº ORIGINAL	Nº EATON	Nº BBB	Nº MAHLE
KIA	RE 2251	OK-6512121		3827-EBN	VE2110188
MITSUBISHI	RA 2269	MD-083657	VS5910	3594-AN	
MITSUBISHI	RE 2270	MD-083659	VS5877	3595-EPN	
RENAULT	RA 2279	REN-109601-M			
RENAULT	RE 2280	REN-109611C			
HYUNDAI	RA 2309	2221142200		4170-AN	VA2081301
HYUNDAI	RE 2310	2221242200		4171-EN	
TOYOTA	RA 2315	1371117010	VS5845	3778-AN	
TOYOTA	RE 2316	1371517010	VS5832	3779-EBN	
TOYOTA	RA 2355	13711-30030		4016-AN	VA0631770
TOYOTA	RE 2356	13715-30030		4017-EN	VE0631771
HYUNDAI / MITSUBISHI	RA 2373	2221142520	VS5816	3896-AN	VA1950223
HYUNDAI / MITSUBISHI	RE 2374	2221242520	VS5812	3897-EN	VE1950224
MERCEDES BENZ	RA 2375	6110530101	VS5831	3658-AN	VA0480233
MERCEDES BENZ	RE 2376	6110500127	VS5900	3659-EN	
RENAULT	RA 2377	4506083 / 7701472669	VS5792	4080-AN	VA0181483
RENAULT	RE 2378	4506084 / 7701472670	VS5791	4081-EPN	VE0181484
RENAULT	RA 2379	7701466607			
RENAULT	RE 2380	7701468690			
PEUGEOT	RA 2381	0948.94		3304-A	
PEUGEOT	RE 2382	93510773		3303-EC	
FIAT IVECO	RA 2383	504238924		4112-AC	VA0011475
FIAT IVECO	RE 2384	504238925		4113-EC	VE0011616
AUDI / VOLKSWAGEN	RA 2392	03L.109.601	VS6083	4104-A	VA0701558
AUDI / VOLKSWAGEN	RE 2393	03L.109.611	VS6084	4105-EB	VE0701559
AUDI / VOLKSWAGEN	RA 2394	03G.109.601-B			
AUDI / VOLKSWAGEN	RE 2395	03G.109.611-D			
NISSAN	RA 2396	13201-AD201		4136-A	
NISSAN	RE 2397	13202-AD200		4137-EN	
HYUNDAI / KIA	RA 2430	22211-4A060		4120-AN	
HYUNDAI / KIA	RE 2431	22212-4A061		4121-EN	
RENAULT	RA 2442	1320100Q0A		4458-A	VA0181766

# EQUIVALÊNCIAS RIC / RIC EQUIVALENCES

MARCA	Nº RIC	Nº ORIGINAL	Nº EATON	Nº BBB	Nº MAHLE
RENAULT	RE 2443	1320200Q0A / 4431241		4459-EB	VE0181767
FORD	RA 2454			4340-AN	
FORD	RE 2455			4341-EN	
CUMMINS	RA 2460	3940735 / 5011879	VS5102	3976-AC	VA0210442
CUMMINS	RE 2461	3940734 / 5011877	VS5953	3977-ECB	VE0210443
FORD	RA 2465			4292-AC	
FORD	RE 2466			4293-ECP	
GENERAL MOTORS	RA 2481	55599817		4470-AC	
GENERAL MOTORS	RE 2482	12625566		4471-ECB	
MITSUBISHI	RA 2485	ME-203101	VS6081	4310-AN	
MITSUBISHI	RE 2486	ME-203102	VS6082	4311-EN	
MERCEDES BENZ	RA 2489	A6510530101	VS6056	4530-AC	VA0481563
MERCEDES BENZ	RE 2490	A6510500127	VS6057	4531-ECB	VE0481564
MITSUBISHI	RA 2507				
MITSUBISHI	RE 2508				
PEUGEOT	RA 2512			3624-AC	
PEUGEOT	RE 2513			3625-EC	
FIAT	RA 2521	55251295		4658-AC	VA0251777
FIAT	RE 2522	55220016		4659-ECX	VE0251778
MERCEDES BENZ	RA 3020	3450537101 / 3460530001	VS1157	229-AC	VA0480048
MERCEDES BENZ	RE 3021	3450537105 / 3460530005	VS1158	1229-ECP	VE0480047
MERCEDES BENZ	RA 3054	3260530701			
MERCEDES BENZ	RE 3055	3260530905			
CATERPILLAR	RA 3056	5S6452	VS0969	573-A	VA0110143
CATERPILLAR	RE 3057	5S6459	VS0968	573-E	VE0110142
MERCEDES BENZ	RA 3062	3450500026 / 3450537201	VS1129	3262-AC	VA0480080
MERCEDES BENZ	RE 3063	3450500127	VS1128	3263-ECB	VE0480079
MERCEDES BENZ	RA 3064	3550530001	VS1136	843-AC	VA0480091
MERCEDES BENZ	RE 3065	3550530005	VS1137	1843-ECP	VE0480009
MERCEDES BENZ	RA 3236	4220500226	VS2520	1839-ACB	VA0480056
MERCEDES BENZ	RE 3237	4220500127	VS4362	1839-ECB	VE0480055
CUMMINS	RA 3242	3920867	VS4307	3466-AC	VA0210151

# EQUIVALÊNCIAS RIC / RIC EQUIVALENCES

MARCA	Nº RIC	Nº ORIGINAL	Nº EATON	Nº BBB	Nº MAHLE
CUMMINS	RE 3243	3920868	VS4306	3467-ECB	VE0210150
CUMMINS	RA 3244	3924492	VS4309	3334-AC	VA0210153
CUMMINS	RE 3245	3921444	VS4308	3335-ECP	VE0210152
FORD	RA 3254	E2TN-6507-AA	VS1498	3044-AC	
FORD	RE 3255	E2TN-6505-AB	VS1660	3045-ECP	
FORD	RA 3256	E5HN-6507-AA	VS2364	23029-ACB	
FORD	RE 3257	E5HN-6505-AA	VS2361	23029-ECB	
VALTRA	RA 3462	836646356	VS5631	3918-AC	VA0310273
VALTRA	RE 3463	836646357	VS5301	3919-ECB	VE0310274
MERCEDES BENZ	RA 3487	457.053.00.01	VS5037	3856-AC	VA0480193
MERCEDES BENZ	RE 3488	541.050.02.27	VS5225	3857-ECB	VE0480194
AGRALE	RAE 4087	7.008.006.005.009			
AGRALE	RA 4088	7.004.006.005.008	VS0936		
AGRALE	RE 4089	7.004.006.006.006	VS0935		
AGRALE	RA 4090	7.006.006.006.003	VS1333	3326-A	
AGRALE	RE 4091	7.006.006.006.001	VS1332	3327-E	
AGRALE	RA 4092	7.007.006.005.001	VS1301	3924-A	VA0060904
AGRALE	RE 4093	7.007.006.006.009	VS1300	3925-E	VE0060907
YANMAR	RAE 4094	NT 75 - B - 503			
YANMAR	RAE 4095	NT 85 - B - 503			
YANMAR	RAE 4096	NT 95 - B 503			
YANMAR	RA 4097	NS11-11-100		3366-A	
YANMAR	RE 4098	NS11-11-110		3367-E	
YANMAR	RA 4099	NS18-11-100		3370-AC	
YANMAR	RE 4100	NS18-11-110		3371-EC	
YANMAR	RA 4101	NS90-11-100		3364-A	
YANMAR	RE 4102	NS90-11-110		3365-E	
HONDA	RA 5170	147721383000-BR		23293-AP	VA0510045
HONDA	RE 5171	147711383000BR		23293-EP	VE0510046
HONDA	RA 5172	147114400030-BR		3408-AC	VA0510116
HONDA	RE 5173	147214370000BR		23409-ECB	VE0510117
HONDA	RA 5174	14711KY08901-R		3416-AC	VA0510029

# EQUIVALÊNCIAS RIC / RIC EQUIVALENCES

MARCA	Nº RIC	Nº ORIGINAL	Nº EATON	Nº BBB	Nº MAHLE
HONDA	RE 5175	14721KY08901R		23417-ECB	VE0510030
HONDA	RA 5176	14711KL3670		3418-AC	VA0510134
HONDA	RE 5177	14721KF0000		23419-ECB	VE0510135
HONDA	RA 5180	14711KG0000		3410-AN	VA0510132
HONDA	RE 5181	14721KG0000		23411-EBN	VE0510133
HONDA	RA 5182	14711413000		1647-AB	VA0510191
HONDA	RE 5183	14721413000		1647-EB	VE0510192
HONDA	RA 5184	14711MJ0000			
HONDA	RA 5186	14711KGAB000-R		3838-AN	VA0510195
HONDA	RE 5187	14721KGAB000-R		3839-EN	VE0510196
YAMAHA	RA 5188	5H01211102			VA0521670
YAMAHA	RE 5189	5H01212101			VE0521671
HONDA	RA 5190	14711KW9000-R		1001-AC	VA0510070
HONDA	RE 5191	14721KW9000R		1002-ECB	VE0510069
HONDA	RA 5192	14711GN59130		1010-A	VA0510126
HONDA	RE 5193	14721GF60101		1011-ESN	VE0510127
YAMAHA	RA 5194	5HH1211100		3950-AN	VA0520199
YAMAHA	RE 5195	5HH1212100		3951-ESN	VE0520200
HONDA	RA 5196	14711KPF9000RWI		3952-AN	VA0510128
HONDA	RE 5197	14721-KPF-9000-RWI		3953-EBN	VE0510129
HONDA	RA 5216	14711KRM8400		3904-AC	VA0510197
HONDA	RE 5217	14721KRM8400		3905-ECB	VE0510198
SUNDOWN	RA 5230	031CV0010			
SUNDOWN	RE 5231	031ACV0011			
SUNDOWN	RA 5232	071ACV0005			
SUNDOWN	RE 5233	071ACV0006			
HONDA	RA 5238	14711-KSS900		4066-A	VA0510227
HONDA	RE 5239	14721-KSS900		4067-ECB	VE0510228
SUZUKI	RA 5291	1291112F50			VA5081716
SUZUKI	RE 5292	1291212F50			VE5081717
HONDA	RA 5400	14711-KWG-600		4542-AN	VA0511477
HONDA	RE 5401	14721-KWG-600		4543-EBN	VE0511478

# EQUIVALÊNCIAS RIC / RIC EQUIVALENCES

MARCA	Nº RIC	Nº ORIGINAL	Nº EATON	Nº BBB	Nº MAHLE
HONDA	RA 5434	14711-KCY-670			VA0510269
HONDA	RE 5435	14721-KCY-670			VE0510270
HONDA	RA 5436	14711-KRE-G00			VA0511696
HONDA	RE 5437	14721-KRE-G00			VE0511697
HONDA	RA 5469				
SUZUKI	RA 5471	12911-25H01-000			
SUZUKI	RE 5472	12912-25H01-000			
HONDA	RA 5491				VA0511744
HONDA	RE 5492				VE0511745
HONDA	RA 5493	14711-GFM-900			VA0511710
HONDA	RE 5494	14721-GFM-901			
MBB TOP BRAKE	RAE 6003	4420160391		3693-E	
MBB TOP BRAKE	RAE 6004	5410160791		3875-EC	
MBB TOP BRAKE	RAE 6018	A9060160791		3874-EC	
VW COMPETIÇÃO	RA 6006				
VW COMPETIÇÃO	RE 6007				
GM COMPETIÇÃO	RA 6009				
GM COMPETIÇÃO	RE 6010				
VW COMPETIÇÃO	RA 6202				
VW COMPETIÇÃO	RE 6203				
VW COMPETIÇÃO	RA 6204				
VW COMPETIÇÃO	RE 6205				
VW COMPETIÇÃO	RA 6223				
VW COMPETIÇÃO	RE 6224				



## **EXCELÊNCIA NA FABRICAÇÃO DE VÁLVULAS TECNOLOGIA 100% BRASILEIRA**

A RIC Componentes, empresa 100% nacional, tradicional fabricante de válvulas de admissão e escape, vem solidificando sua presença no mercado, através da comprovação da qualidade de seus produtos e dos constantes investimentos em seu processo produtivo.

Com produtos de qualidade, a RIC vem conquistando o mercado interno e externo e fidelizando clientes e usuários.

### **QUALIFICAÇÃO, EXCELÊNCIA E GARANTIA**

Por atender as exigências internacionais de qualidade a RIC Componentes é certificada com a ISO 9001 podendo ser fornecedora de produtos em nível mundial.

### **COMPETÊNCIA BRASILEIRA PARA O MUNDO**



## **EXCELLENCE IN VALVES MANUFACTURE. BRAZILIAN TECHNOLOGY**

RIC COMPONENTS, 100% brazilian company, is a traditional manufacture of intake and exhaust valves, has been strengthening participation in the global market by proving the quality of the products and constant investments in the production process.

With high quality products, RIC has been winning the global market and loyalty to the customers and users.

### **QUALIFICATION AND EXCELLENCE**

By meeting international quality requirements, RIC Components is certified with ISO 9001 and can be a supplier of products worldwide.

### **RIC COMPONENTS, BRAZILIAN COMPETENCE FOR THE WORLD**

# **RIC** **componentes**

Rua Coronel Gonçalves, 270 | Eugênio de Melo, São José  
dos Campos - SP - Brasil  
CEP 12247-002 | Tel.: +55 12 3905-5100  
[vendas@riccomponentes.com.br](mailto:vendas@riccomponentes.com.br)

270 Coronel Gonçalves ST. | Eugenio de Melo,  
Sao Jose dos Campos - SP - Brazil  
ZIP 12247-002 | Phone: +55 12 3905-5100

[WWW.RICCOMPONENTES.COM.BR](http://WWW.RICCOMPONENTES.COM.BR)

